

1 CLOTHESWASHER DETAIL
NO SCALE

REGULATORY NOTES

- REGULATORY NOTES
- CODE ANALYSIS
THE CONSTRUCTION OF THIS PROJECT SHALL CONFORM TO THE REQUIREMENTS OF:
- A. 2013 CALIFORNIA BUILDING CODE, BASED ON 2012 IBC
 - B. 2013 CALIFORNIA FIRE CODE, BASED ON 2012 IFC
 - C. 2013 CALIFORNIA PLUMBING CODE, BASED ON 2012 UPC
 - D. 2013 CALIFORNIA MECHANICAL CODE, BASED ON 2012 UMC
 - E. 2013 CALIFORNIA ELECTRICAL CODE, BASED ON 2011 NEC
 - F. 2013 CALIFORNIA ENERGY STANDARDS
 - G. 2013 CALIFORNIA GREEN STANDARDS BUILDING CODE

- SEISMIC RESTRAINTS
- PIPING
- A. SEISMIC BRACING AND ANCHORAGE OF PLUMBING PIPING SHALL BE IN ACCORDANCE WITH THE "GUIDELINES FOR SEISMIC RESTRAINTS OF MECHANICAL SYSTEMS AND PLUMBING PIPING SYSTEMS," PUBLISHED BY SMACNA.

- MANDATORY CONSERVATION MEASURES
- WATER
- A. WATER CLOSETS SHALL BE WATER CONSERVING 128 GALLONS PER FLUSH TYPE.
- B. LAVATORY, SINK FITTINGS AND SHOWER ASSEMBLIES SHALL BE LISTED AS "APPROVED" BY THE CALIFORNIA ENERGY COMMISSION.
1. AERATOR AND SHOWER HEADS SHALL INCLUDE INTEGRAL FLOW RESTRICTING DEVICES TO LIMIT FLOW AS FOLLOWS:
A) FAUCET AERATOR - 1.5 GPM MAXIMUM
B) SHOWER HEADS - 2.0 GPM MAXIMUM
- D. URINALS SHALL BE 0.5 GALLON PER FLUSH OR LESS
- ENERGY

- A. DOMESTIC HOT WATER PIPING INSULATION SHALL BE LISTED AS "APPROVED" BY THE CALIFORNIA ENERGY COMMISSION.
- B. DOMESTIC HOT WATER PIPING SHALL BE INSULATED CONSISTENT WITH THE REQUIREMENTS OF THE CALIFORNIA ENERGY COMMISSION ENERGY EFFICIENCY STANDARDS SECTIONS 118 AND 123.

- MANDATORY ACCESSIBILITY MEASURES
- FIXTURES
- A. ACCESSIBLE PLUMBING FIXTURES SHALL BE INSTALLED IN STRICT ACCORDANCE WITH THE 2013 CALIFORNIA BUILDING CODE.
- FITTINGS AND TRIM
- A. EXPOSED P-TRAP ASSEMBLY AND HOT & COLD WATER SUPPLIES SHALL INCLUDE PRE-MANUFACTURED INSULATION KIT.
- B. THE FORCE REQUIRED TO OPERATE LAVATORY OR SINK FAUCETS SHALL BE NO GREATER THAN 5 LBS. SELF CLOSING FAUCETS SHALL HAVE MINIMUM 10 SECOND CYCLE TIME.

- CROSS CONNECTION CONTROL MEASURES
- PLUMBING SPECIALTIES
- A. HOSE BIBBS SHALL BE EQUIPPED WITH INTEGRAL VACUUM BREAKERS.
- FIRE RESISTIVE BUILDING MATERIALS
- PIPING INSULATION
- ALL INSULATING MATERIAL SHALL BE INSTALLED IN COMPLIANCE WITH THE FLAME SPREAD RATING AND SMOKE DENSITY REQUIREMENTS OF SECTION 720.7 OF 2013 CALIFORNIA BUILDING CODE.
- INSULATION, INSULATION JACKET, ADHESIVES, TAPES, ETC. SHALL BE APPLIED PER MANUFACTURERS WRITTEN INSTALLATION INSTRUCTIONS

PROJECT NOTES

- GENERAL
- A. VERIFY ALL DIMENSIONS, ELEVATIONS AND SITE CONDITIONS PRIOR TO THE COMMENCEMENT OF ANY WORK. IN THE EVENT OF ANY DISCREPANCIES THE STATE'S REPRESENTATIVE SHALL BE IMMEDIATELY NOTIFIED IN WRITING.
- B. ALL OMISSIONS AND OR CONFLICTS BETWEEN THE VARIOUS ELEMENTS OF THE CONSTRUCTION DOCUMENTS SHALL BE BROUGHT TO THE ATTENTION OF AND RESOLVED WITH THE STATE'S REPRESENTATIVE PRIOR TO PROCEEDING WITH ANY OF THE AFFECTED WORK.
- C. ALL MATERIALS AND WORKMANSHIP SHALL CONFORM TO THE REQUIREMENTS OF CBC AND CPC.
- D. THE PLUMBING CONSTRUCTION DOCUMENTS REPRESENT THE PLUMBING AND PIPING SYSTEMS, NOT THE METHOD OF CONSTRUCTION. THE CONTRACTOR SHALL BE RESPONSIBLE FOR ALL LABOR, MATERIALS, EQUIPMENT AND ACCESSORIES NECESSARY TO ACHIEVE THE FINISHED SYSTEMS.

GENERAL NOTES

1. WATER HAMMER ARRESTERS SHALL BE PROVIDED AT QUICK CLOSING FIXTURES PER CFC 609.10.
2. STOP VALVES SHALL BE PROVIDED AT ALL FIXTURES TO ENABLE REGULATION OF FLOW AND SHUT DOWN OF SUPPLY TO FIXTURES PER CFC 606.0
3. PENETRATIONS OF PIPES, CONDUITS, ETC IN WALLS, FLOORS OR CEILING ASSEMBLIES REQUIRING PROTECTED OPENINGS SHALL BE A TESTED ASSEMBLY PER CFC 312.1
4. MOUNTING HEIGHTS FOR HANDICAPPED FIXTURES TO COMPLY WITH ADA REQUIREMENTS PER ARCHITECTURAL DRAWINGS.
5. A TRAP PRIMER VALVE SHALL BE USED WITH ALL FLOOR DRAINS IN ORDER TO MAINTAIN THE TRAP SEAL PER CFC 1007.1
6. SHOWERS AND TUB SHOWER COMBINATIONS SHALL BE PROVIDED WITH INDIVIDUAL CONTROL VALVES OF THE PRESSURE BALANCING OR THE THERMOSTATIC MIXING VALVE TYPE. HANDLE POSITION STOPS SHALL BE ADJUSTED TO DELIVER A MAXIMUM MIXED WATER SETTING OF 120°F PER CFC 408.3

FIRE PROTECTION

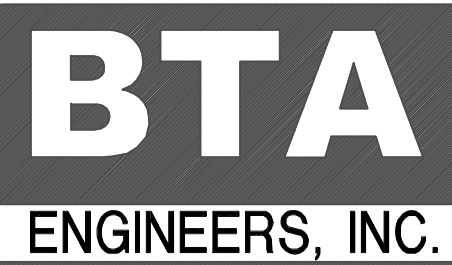
1. THE AUTOMATIC FIRE PROTECTION SYSTEM SHALL CONFORM TO THE REQUIREMENTS OF NFPA 13 (2013). FIRE SPRINKLER PIPING WORK AND/OR ALTERATIONS SHALL BE PERFORMED BY A LICENSED FIRE SPRINKLER CONTRACTOR.
2. FIRE SPRINKLER CONTRACTOR TO COORDINATE PLACEMENT OF SPRINKLERS WITH ELECTRICAL CONTRACTOR TO AVOID CONFLICT WITH CEILING FANS WHERE THEY OCCUR.
3. THE FIRE WATER SYSTEM TO BE REVIEWED BY THE FIRE DEPARTMENT AND THE CITY ENGINEER.

LEGEND

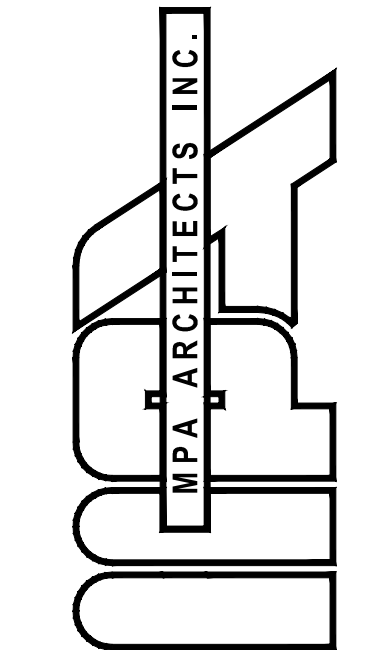
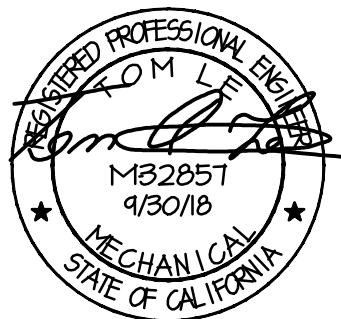
SYMBOLS	ABBREV	DESCRIPTION
	S OR W	SANITARY OR WASTE ABOVE FLOOR
	S OR W	SANITARY OR WASTE BELOW FLOOR
	OW	OIL WASTE
	GW	GREASE WASTE
	FCO	FLOOR CLEANOUT
	POC	POINT OF CONNECTION
	FD	FLOOR DRAIN
	VT	SANITARY VENT
	C.W.	COLD WATER
	H.W.	HOT WATER
	H.W.R.	HOT WATER RETURN
	S.O.V.	SHUT OFF VALVE/ISOLATION (BALL TYPE)
		WALL CLEANOUT
		PIPE-UP
		PIPE-DOWN
	H.B.	HOSE-BIBB
	TP	TRAP PRIMER
	SD	STORM DRAIN
		LPG EARTHQUAKE VALVE
	ABV.	ABOVE
	BEL.	BELOW
	CONT.	CONTINUATION
	FLR.	FLOOR
	GR.	GRADE
	TYP.	TYPICAL
	V.T.R.	VENT THROUGH ROOF
	FS	FLOOR SINK

PIPE MATERIALS

- A. ABOVE GRADE - SANITARY WASTE AND VENT: NO-HUB CAST IRON SOIL PIPE AND FITTINGS ASTM C564 AND IAPMO LISTED STAINLESS STEEL/NEOPRENE GASKET COUPLING.
- BELOW GRADE - SANITARY WASTE AND VENT: PVC SCH 40 DWV SOLID WALL PIPE CELL CLASS 12454 ASTM D1784 & ASTM D1785 AND FITTINGS ASTM D2665, SOLVENT CEMENT ASTM D2564, PRIMER ASTM F656, CAST IRON TO PLASTIC PIPE SHALL BE MADE VIA FERNCO COUPLINGS
- B. DOMESTIC COLD AND HOT WATER: ASTM B88, TYPE L, LEAD FREE SOLDER JOINTS, HARD DRAWN COPPER TUBING, FITTINGS ANSI/ASME B16.22, WROUGHT COPPER. INSULATE HOT WATER.
- C. DOMESTIC COLD WATER-BELOW GRADE: ASTM B88, TYPE K, LEAD FREE SOLDER JOINTS, SOFT COPPER TUBING, FITTINGS ANSI/ASME B16.22 WROUGHT COPPER (TRAP PRIMER PIPE WRAPPED IN (2) LAYERS 10 MIL PLUMBERS TAPE)
- D. CONDENSATE DRAINAGE: ASTM B88, TYPE M, LEAD FREE SOLDER JOINTS, HARD DRAWN COPPER TUBING, FITTINGS ANSI/ASME B16.22, WROUGHT COPPER. INSULATED.
- E. 2" BELOW GRADE DOMESTIC COLD WATER SITE PIPING: CORZAN CPVC SCHEDULE 80 IRON PIPE SIZE (IPS), ASTM F441, SOCKET FITTINGS ASTM F 439, NSF 61, INSTALL PER MANUFACTURER'S INSTALL MANUAL.
- F. FIRE SUPPLY PIPE BELOW GRADE: PVC PRESSURE PIPE, AWWA C300, DR18, 235 PSI, RM LISTED FOR UNDERGROUND FIRE PROTECTION, INSTALLED PER NFPA 24 & 13 AND PIPE MANUFACTURER'S INSTRUCTIONS/AND LISTING, BURIED WITH A MINIMUM 36" OF COVER.
- D. LPG PIPING
- STEEL PIPE: ASTM A53, SCHEDULE 40 BLACK
FITTINGS: ASTM B16.3, MALLEABLE IRON, OR ASTM A234 FORGED STEEL WELDING TYPE.
JOINTS: NFPA 54, THREADED OR WELDED TO ANSI B312 WRAP BURIED PIPE IN LSP "PLASTI-SLEEVE"
- GALVANIZED STEEL PIPE (EXTERIOR-ABOVE GRADE)
FITTINGS: GALVANIZED STEEL
JOINTS: NFPA 54, THREADED OR WELDED TO ANSI B312



9845 ERMA RD SUITE 204
SAN DIEGO, CA 92131
PH 858 716-8801 FAX 858 433-7587
JOB # 15.74.00



3578 30th Street
San Diego, CA 92104
V. 619.236.0595
F. 619.236.0557
www.mpa-architects.com
MEMBER
AMERICAN INSTITUTE OF ARCHITECTS

CLIENT
COUNTY OF IMPERIAL
PLANNING & DEV.
SERVICES DEPT
801 MAIN STREET
EL CENTRO, CA 92243
(760) 482-4236



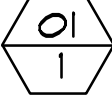

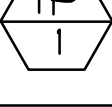
PROJECT

A PROPOSED PUBLIC SAFETY FACILITY:
**WINTERHAVEN
PUBLIC SAFETY FACILITY**
518 RAILROAD AVENUE
WINTERHAVEN, CA 92283

REVISIONS		
NO.	DESCRIPTION	DATE

SHEET TITLE		
NOTES		
DATE: 09/18/17	SCALE: NONE	
DRAWN BY:	DATABASE:	
CHECKED BY:	SHEET NUMBER:	P 1.0
PROJECT NO:		

PLUMBING EQUIPMENT SCHEDULE

MARK	DESCRIPTION	LOCATION	MANUFACTURER & MODEL NUMBER	REMARKS
	WATER HEATER COMMERCIAL TANK TYPE, ELECTRIC	SEE PLANS	AQ SMITH - MODEL DRE-80-18 COMMERCIAL GRADE, 18 TOTAL KW, 208 VOLT/3 PHASE, 50 FULL LOAD AMPS, (3) 6 KW HEATING ELEMENTS, 80 GALLON STORAGE, 92 GPH AT 80°F RISE, 98% THERMAL EFFICIENCY, 950 LB OPERATING WEIGHT, UL APPROVED, WITH FLEXCON INDUSTRIES PH-12 EXPANSION TANK, 4.8 GALLON, 50 LB OPERATING WEIGHT, 11" DIA X 14.5 " H	TERMINATE P&T RELIEF LINE AT FLOOR/SERVICE SINK
	CIRCULATION PUMP (IN-LINE)	SEE PLANS	BELL & GOSSET, NBF-3U, 120V/1PHASE, BRONZE CONSTRUCTION, 40 WATTS, LEAD FREE, 2 GPM @ 5 FT HEAD	PROVIDE AQUASTAT & TIMER
	OIL & SAND INTERCEPTOR GRAVITY TYPE	SEE PLANS	JENSEN PRECAST JF1000EE-50, 1000 GALLON, SAND/OIL INTERCEPTOR, 4" INLET/OUTLET, H-20 TRAFFIC RATED, FIELD ADJUSTABLE RISERS TO LID IS FLUSH WITH GRADE, WITH JENSEN PRECAST H-20 RATED SAMPLE BOX	
	GARBAGE DISPOSAL	SEE PLANS	INSINKERATOR BADGER 5XP, 120V/1PH, ¾ HORSEPOWER, 1725 RPM, 81 AMPS, DISHWASHER DRAIN CONNECTION, WITH INSINKERATOR PLUG-IN CORD	
	TRAP PRIMER	SEE PLANS	SIOUX CHIEF 695-01	

WATER FIXTURE SUMMARY

Appliances, Appurtenances or Fixtures	Minimum Fixture Branch Pipe size	Private	Public	Assembly	# Fixtures Added	# Fixtures Removed	# Fixtures Remaining	TOTAL ACROSS
Hose bibb	1/2"	2.5		-	1			2.5
Hose bibb each additional	1/2"	1.0		-	3			3.0
Mopsink	1/2"	1.5	3.0	-	1			3.0
Dishwasher	1/2"	1.5	1.5	-	2			3.0
Lavatory	1/2"	1.0	1.0	-	8			8.0
Kitchen Sink	1/2"	1.5	1.5	-	2			3.0
Laundry sink	1/2"	1.5	1.5	-	1			1.5
Shower	1/2"	2.0	2.0	-	5			10.0
Water Closet, Flush Tank	1/2"	2.5	2.5	3.5	7			17.5
Water Closet, Flushometer	1"	5.0	5.0	8.0				
Clothes Washer	1/2"	4.0	4.0	-	1			4
Urinal, flushometer	3/4"	3.0	4.0	5.0	3			12
Total Fixture Units --								67.5

SEWER FIXTURE SUMMARY

Appliances, Appurtenances or Fixtures	Minimum Trap & Trap arm size	Private	Public	Assembly	# Fixtures Added	# Fixtures Removed	# Fixtures Remaining	TOTAL ACROSS
Lavatory	1-1/4"	1.0	1.0	1.0	8			8.0
Kitchen Sink with dishwasher	2"	2.0	2.0	-	2			4.0
Laundry sink	1-1/2"	2.0	2.0	2.0	1			2.0
Shower	2"	2.0	2.0	2.0	5			10.0
Water Closet	3"	3.0	4.0	6.0	7			28.0
Clothes Washer	2"	3.0	3.0	3.0	1			3
Service Sink	2"	-	3.0	3.0	1			3.0
Urinal	2"	2.0	2.0	5.0	3			6.0
Trench Drain	3"	-	3.0	-	3			9.0
Total Fixture Units --								73

WATER CALCULATION
PRESSURE ANALYSIS

FIXTURE UNIT/GPM DEMAND		(67.5 FIXTURE UNITS/ (58 GPM))
PRESSURE AVAILABLE (MINIMUM) PER WINTERHAVEN WATER DISTRICT	55 PSI	
PRESSURE LOSS		
(A) WATER METER, BADGER M110	2	
(B) BACKFLOW PREVENTOR	14	
(C) RESIDUAL	25	
(D) ELEVATION LOSS (12 FT X .433)	6	
PRESSURE AVAILABLE (PSI)	8	
LONGEST DEVELOPED LENGTH (FT)	250	
CALCULATED ALLOWABLE DROP		
___ PSI X 100 / - FT. (DEVELOPED LENGTH) ___ PSI / 100 FT.	32	

PIPE SIZE SCHEDULE (COLD WATER) COPPER TUBING TYPE 'L'

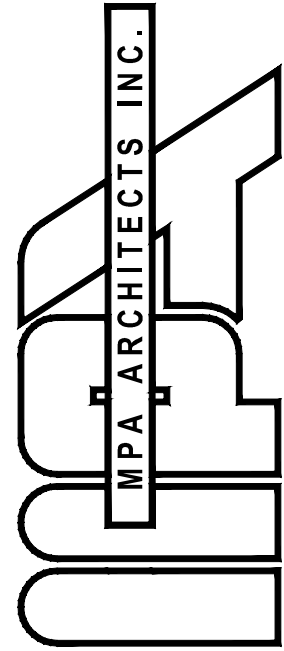
SIZE	GPM	FT. F.U.	F.V. F.U.	
1/2"	15	15	0	
3/4"	5	6	0	
1"	10	13	0	
1-1/4"	18	26	0	
1-1/2"	29	51	12	
2"	60	175	76	
PIPING SIZE FROM TABLE A21, CHARTS A21, A21(K1) AND A41, 2013 CFC BASED ON 32 PSI/ 100 FT. MAXIMUM ALLOWABLE PRESSURE DROP AT MAXIMUM VELOCITY OF 8 FEET PER SEC.				

PIPE SIZE SCHEDULE (HOT WATER) COPPER TUBING TYPE 'L'

SIZE	GPM	FT. F.U.	
1/2"	15	15	
3/4"	5	6	
1"	10	13	
1-1/4"	18	26	
1-1/2"	28	49	
PIPING SIZE FROM TABLE A21, CHARTS A21, A21(K1) AND A41, 2013 CFC BASED ON 32 PSI/ 100 FT. MAXIMUM ALLOWABLE PRESSURE DROP AT MAXIMUM VELOCITY OF 5 FEET PER SEC.			

FIXTURE CONNECTION SCHEDULE

MARK	DESCRIPTION	MINIMUM PIPE CONNECTION				MANUFACTURER / MODEL NUMBER OR EQUAL	REMARKS
		C.W.	H.W.	WASTE	VENT		
<u>WC-1</u>	WATER CLOSET- FLOOR MOUNTED, (FLUSH TANK) ADA, LEFT FLUSH	1/2'	-	3'	2'	AMERICAN STANDARD, CADET PRO RIGHT HEIGHT, 215AA104, 12" ROUGH-IN, WITH LEFT HAND FLUSH LEVER, ELONGATED, V.C, 128 GFF, WITH BEMIS 195568CTP ELONGATED OPEN FRONT SEAT, SUPPLY/ANGLE STOP (CHROME FINISH), FIXTURE COLOR: WHITE, ASME A112.19.2/CSA B45.1-08 COMPLIANT	
<u>WC-2</u>	WATER CLOSET- FLOOR MOUNTED, (FLUSH TANK) ADA, RIGHT FLUSH	1/2'	-	3'	2'	AMERICAN STANDARD, CADET PRO RIGHT HEIGHT, 215AA105, 12" ROUGH-IN, WITH RIGHT HAND FLUSH LEVER, ELONGATED, V.C, 128 GFF, WITH BEMIS 195568CTP ELONGATED OPEN FRONT SEAT, SUPPLY/ANGLE STOP (CHROME FINISH), FIXTURE COLOR: WHITE, ASME A112.19.2/CSA B45.1-08 COMPLIANT	
<u>LAV-1</u>	LAVATORY (WALL-MOUNTED) ADA	1/2'	1/2'	2'	1 1/2'	AMERICAN STANDARD - 0355.012.020, LUCERNE, FRONT OVERFLOW, CONCEALED HANGER, V.C, FIXTURE COLOR WHITE, WITH SYMMONS MODEL 9-T2-G METERING LAVATORY, AB1953 COMPLIANT, 15 GPM AERATOR, CHROME FINISH, GRID DRAIN, AB1953/NSF 61 ANGLE STOPS & FLEXIBLE SUPPLIES, 11 GAUGE P-TRAP, WITH ASSE 1069, ASSE 1010 LISTED MIXING VALVE, CSA B125 TO TEMPER HOT WATER TO 110°F	INSULATE TAILPIECE & SUPPLIES WITH TRUEBRO
<u>LAV-2</u>	LAVATORY (WALL-MOUNTED) ADA	1/2'	1/2'	2'	1 1/2'	AMERICAN STANDARD - 0356.015.020, LUCERNE, FRONT OVERFLOW, CONCEALED HANGER, V.C, FIXTURE COLOR WHITE, WITH SYMMONS MODEL 9-243-1-LAM-15, AB1953 COMPLIANT, 15 GPM AERATOR, CHROME FINISH, POP-UP DRAIN, AB1953/NSF 61 ANGLE STOPS & FLEXIBLE SUPPLIES, 11 GAUGE P-TRAP, WITH ASSE 1069, ASSE 1010 LISTED MIXING VALVE, CSA B125 TO TEMPER HOT WATER TO 110°F	INSULATE TAILPIECE & SUPPLIES WITH TRUEBRO
<u>UR-1</u>	URINAL (ADA) FLUSH VALVE	3/4'	-	2'	1 1/2'	AMERICAN STANDARD 6590.001.020, WASHBROOK URINAL, V.C, 0.125 GFF/1 PINT, WITH SLOAN ROYAL 106-125 FLUSH VALVE, 0.13 GFF/1 PINT GFF, FIXTURE COLOR: WHITE, MOUNT RIM OF URINAL 11" ABOVE FINISHED FLOOR	
<u>S-1</u>	KITCHEN SINK DOUBLE BASIN (UNDER MOUNT)	1/2'	1/2'	2'	1 1/2'	ELKAY - *ELUHAD4218, LUSTERTONE DOUBLE BASIN, 5 1/2" DEEP, 18 GAUGE, 304 SS, LK-99 STRAINER, *AMERICAN STANDARD 4175.500F15 FAUCET(CHROME FINISH) LESS SPRAYER, AB1953 COMPLIANT, 8' CENTER, WITH 15 GPM AERATOR, NSF 61/AB1953 COMPLIANT ANGLE STOPS, FLEXIBLE SUPPLIES, 11 GAUGE P-TRAP , WITH DECKMOUNTED AIRGAP FOR DISHWASHER	
<u>S-2</u>	KITCHEN SINK' DOUBLE BASIN (UNDER MOUNT)	1/2'	1/2'	2'	1 1/2'	ELKAY - *ELUHAD3216, LUSTERTONE DOUBLE BASIN, 5 1/2" DEEP, 18 GAUGE, 304 SS, LK-99 STRAINER, *AMERICAN STANDARD 4175.500F15 FAUCET(CHROME FINISH) LESS SPRAYER, AB1953 COMPLIANT, 8' CENTER, WITH 15 GPM AERATOR, NSF 61/AB1953 COMPLIANT ANGLE STOPS, FLEXIBLE SUPPLIES, 11 GAUGE P-TRAP , WITH DECKMOUNTED AIRGAP FOR DISHWASHER	
<u>LS-1</u>	LAUNDRY SINK	1/2'	1/2'	2'	1 1/2'	FLORESTONE 20FM SINK, WITH SYMMONS FAUCET 9-249-15, (CHROME FINISH), 15 GPM AERATOR, NSF 61/AB1953 COMPLIANT ANGLE STOPS, FLEXIBLE SUPPLIES, 11 GAUGE P-TRAP	
<u>MS-1</u>	MOP SINK FLOOR MOUNTED	3/4'	3/4'	3'	2'	FIAT MODEL TSB3000, 24" X 24" TERRAZZO MOP BASIN WITH STAINLESS STEEL RIM GUARDS ON ALL SIDES & STAINLESS STEEL SPLASH PLATE, WITH CHICAGO 891 FAUCET WITH VACUUM BREAKER SPOUT, 3/4" HOSE THREAD ON SPOUT, ADJUSTABLE WALL BRACE, PAIL HOOK, INTEGRAL STOPS IN SUPPLY ARMS AND MOP HANGER.	
<u>SH-1</u>	SHOWER ADA	1/2'	1/2'	2'	1 1/2'	AQUATIC 1603BFS0, ADA SEAT, GRAB BARS, INSTALLED PER 2013 CALIFORNIA BUILDING CODE, WITH SYMMONS C-96-300-B30-V-X-15 HANDHELD SHOWER ASSEMBLY, SLIDE BAR, 60" FLEXIBLE METAL HOSE, PRESSURE BALANCING MIXING VALVE, ASSE 1016/ASME A112.18.1/CSA B125.1, 15 GPM SHOWER HEAD ADJUST HANDLE STOP TO PROVIDE 120°F MAX, WITH DRAIN, P-TRAP	
<u>FS-1</u>	FLOOR SINK	-	-	2'	1 1/2'	JR. SMITH- *9350Y, WITH FLASHING CLAMP/INTEGRAL SEEPAGE FLANGE, 12' X 12' X 8" DEEP, A/R. INTERIOR, CAST IRON BODY WITH FLANGE, DOME STRAINER, INSTALL APPROPRIATE ¾ GRATE OR ½ GRATE, 2" OUTLET AND 2" P-TRAP	
<u>FD-1</u>	FLOOR DRAIN	-	-	2'	1 1/2'	JR. SMITH- *9205Y(A)-F050, 5' DIA., CAST IRON BODY WITH INTEGRAL SEEPAGE FLANGE, ROUND NICKEL BRONZE STRAINER HEAD & TRAP PRIMER CONNECTION, P-TRAP	
<u>TD-1</u>	TRENCH DRAIN	-	-	4'	2'	JR. SMITH 9930 ENVIRO FLO, (10) 328 FT LONG SECTIONS, WITH H20 RATED SLOTTED GRATE, WITH P-TRAP	
<u>HB-1</u>	HOSE BIBB	3/4'	-	-	-	ACORN 8121 WITH VACUUM BREAKER	
<u>VB-1</u>	VALVE BOX	1/2'	-	-	-	IFS CORPORATION *FRIB12ABS (1AFMO *2016)- FIRE RATED ICE MAKER VALVE BOX, SWEAT CONNECTION, QUARTER TURN VALVE, AB1953 COMPLIANT/LEAD FREE	
<u>WB-1</u>	WASH BOX	¾"	¾"	2"	1½"	GUY GRAY/IPS- FR126SHA, FIRE RATED WASHING SUPPLY BOX, 2" DRAIN, SINGLE LEVER, COPPER SWEAT CONNECTION, HOT/COLD WATER SUPPLY, 2" P-TRAP	



3578 30th Street
San Diego, CA 92104
V. 619.236.0595
F. 619.236.0557

www.mpa-architects.com

MEMBER
AMERICAN INSTITUTE OF ARCHITECTS

CLIENT

COUNTY OF IMPERIAL
PLANNING & DEV.
SERVICES DEPT
801 MAIN STREET
EL CENTRO, CA 92243
(760) 482-4236

PROJECT

A PROPOSED PUBLIC SAFETY FACILITY:

WINTERHAVEN

PUBLIC SAFETY FACILITY

518 RAILROAD AVENUE
WINTERHAVEN, CA 92283

REVISIONS

NO.	DESCRIPTION	DATE
-----	-------------	------

SHEET TITLE

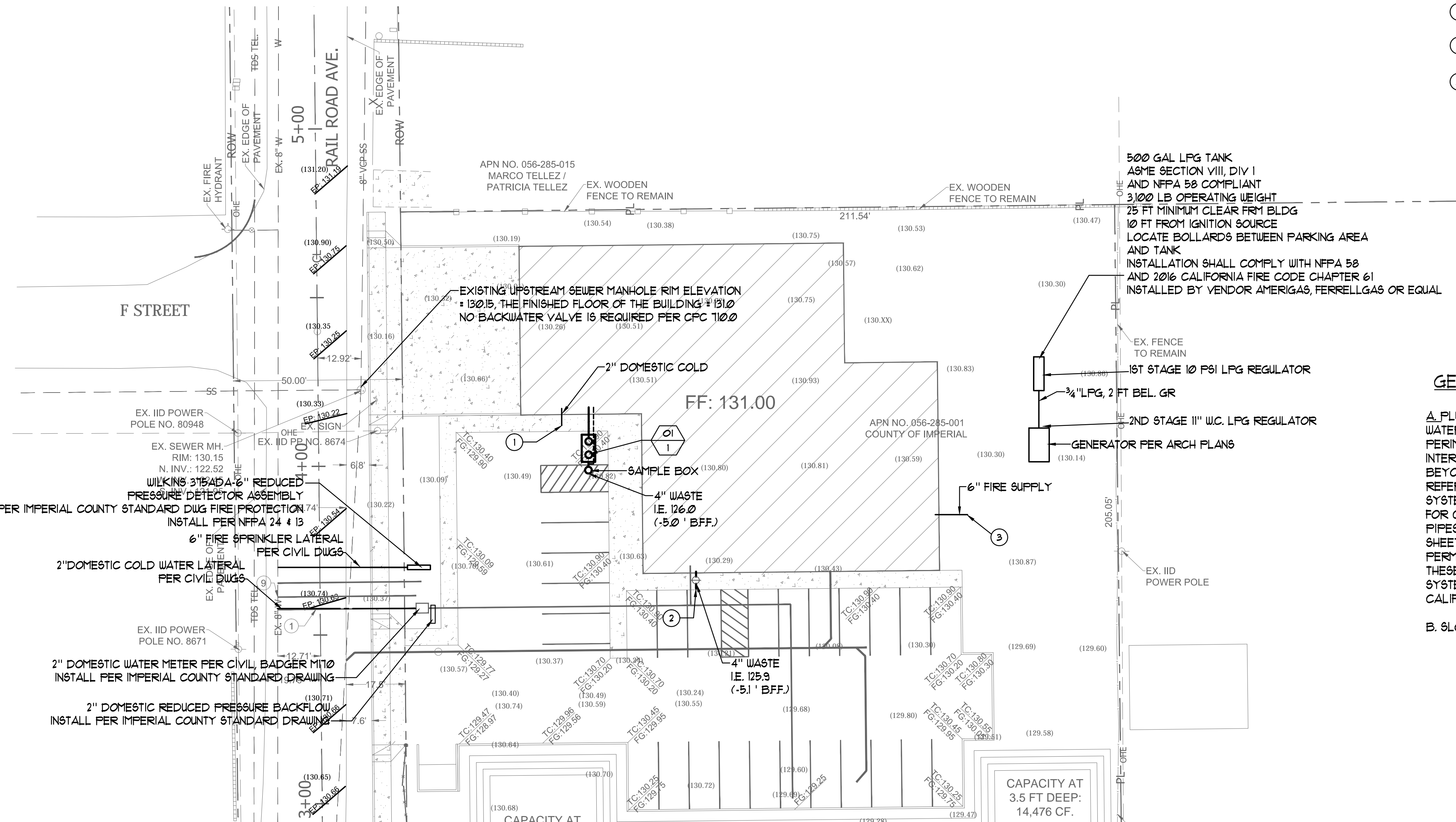
SCHEDULES

DATE: 09/19/17	SCALE: NONE
DRAWN BY:	DATABASE:
CHECKED BY:	SHEET NUMBER: P 1.1
PROJECT NO:	

BTA
ENGINEERS, INC.

9845 ERMA RD SUITE 204
SAN DIEGO, CA 92131
PH 858 716-8601 FAX 858 433-7587
JOB # 15.74.00





KEYNOTES:

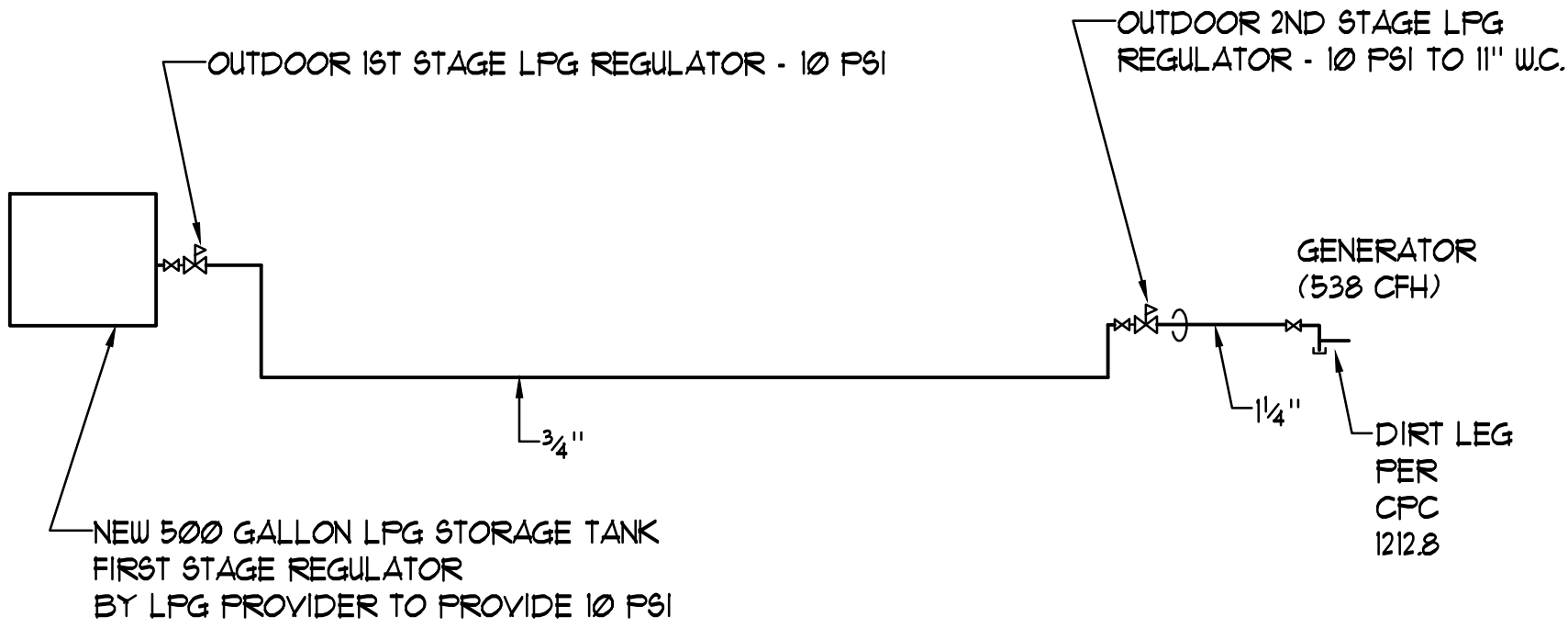
- SEE CIVIL DRAWINGS FOR CONTINUATION OF 2 INCH DOMESTIC COLD WATER PIPE
- SEE CIVIL DRAWINGS FOR CONTINUATION OF 4 INCH SANITARY WASTE PIPE
- SEE CIVIL DRAWINGS FOR CONTINUATION OF 6 FIRE PROTECTION SUPPLY

GENERAL KEYNOTES:

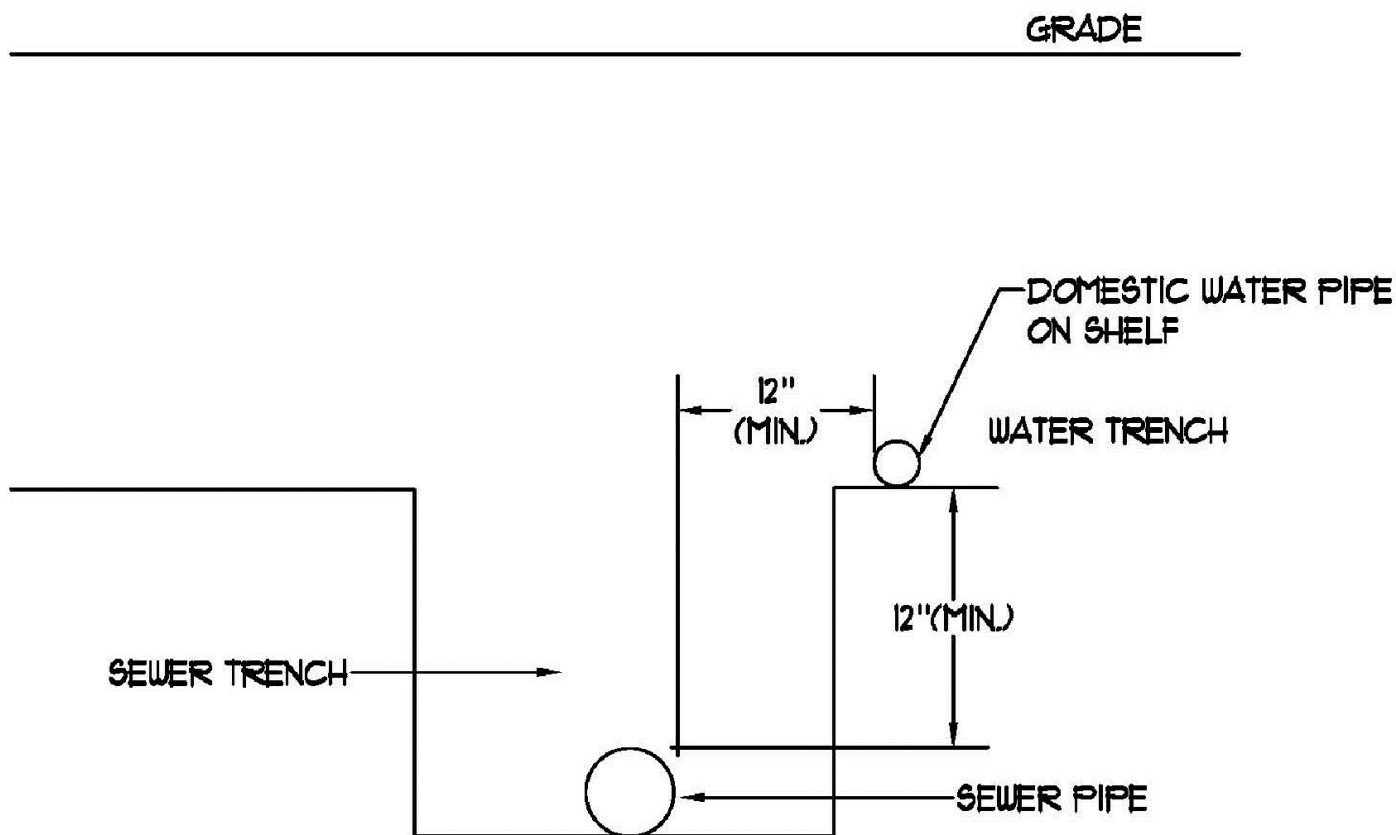
A PLUMBING SCOPE OF WORK (SEWER, DOMESTIC WATER, STORM) IS WITHIN 5 FT OF THE BUILDING PERIMETER. PLUMBING SCOPE INCLUDES OIL INTERCEPTOR AND SAMPLE BOX. PLUMBING SHOWN BEYOND THE BUILDING 5 FT PERIMETER IS FOR REFERENCE ONLY. THE STORMWATER FILTRATION SYSTEM WILL BE DESIGNED BY THE CIVIL ENGINEER. FOR CONTINUATION OF DOMESTIC WATER AND SEWER PIPES BEYOND THE BLDG PERIMETER SEE CIVIL SHEETS. IMPERIAL COUNTY IS RESPONSIBLE FOR PERMITTING, PLAN CHECK, AND INSPECTIONS OF THESE PRIVATE UTILITY SYSTEMS. THE PLUMBING SYSTEMS DESCRIBED ARE DESIGNED PER THE 2013 CALIFORNIA PLUMBING CODE.

B. SLOPE WASTE @ 2% (TYP)

LPG CALCULATIONS			
DESCRIPTION	QUANTITY	BTUH	BTUH TOTAL
GENERATOR	1	538,000	538,000
TOTAL BTUH REQUIREMENT: 538,000			
TOTAL DEVELOPED LENGTH OF 1ST STAGE HIGH PRESSURE LPG PIPE: 20 FT			
TOTAL DEVELOPED LENGTH OF 2ND STAGE LOW PRESSURE LPG PIPE: 10 FT			
ALL LPG PIPING SIZED PER CPC 2016, TABLE 1216.2(24), 1216.2(27)			

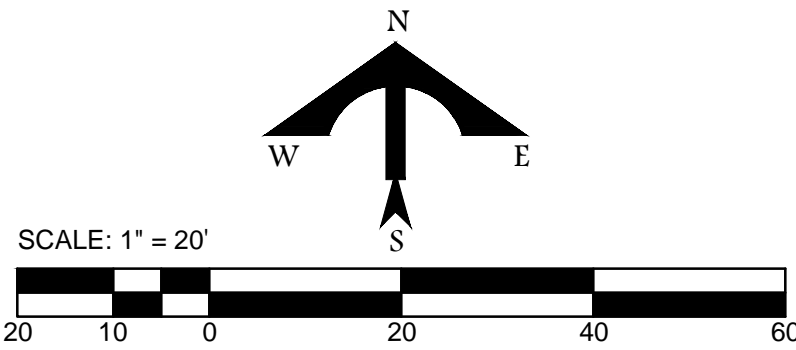


1 LPG PIPING DIAGRAM-GENERATOR
SCALE: NONE



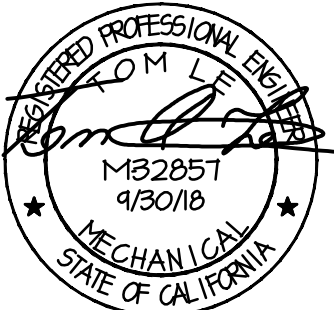
WATER/SEWER SECTION CROSSING ON SITE
SCALE: NONE

PLUMBING SITE PLAN



BTA
ENGINEERS, INC.

8845 ERMA RD SUITE 204
SAN DIEGO, CA 92121
PH 858 715-8801 FAX 858 433-7587
JOB # 15.74.00



3578 30th Street
San Diego, CA 92104
V. 619.236.0595
F. 619.236.0557

www.mpa-architects.com

MEMBER
AMERICAN INSTITUTE OF ARCHITECTS

CLIENT

COUNTY OF IMPERIAL
PLANNING & DEV.
SERVICES DEPT
801 MAIN STREET
EL CENTRO, CA 92243
(760) 482-4236

PROJECT

A PROPOSED PUBLIC SAFETY FACILITY:
WINTERHAVEN
PUBLIC SAFETY FACILITY
518 RAILROAD AVENUE
WINTERHAVEN, CA 92283

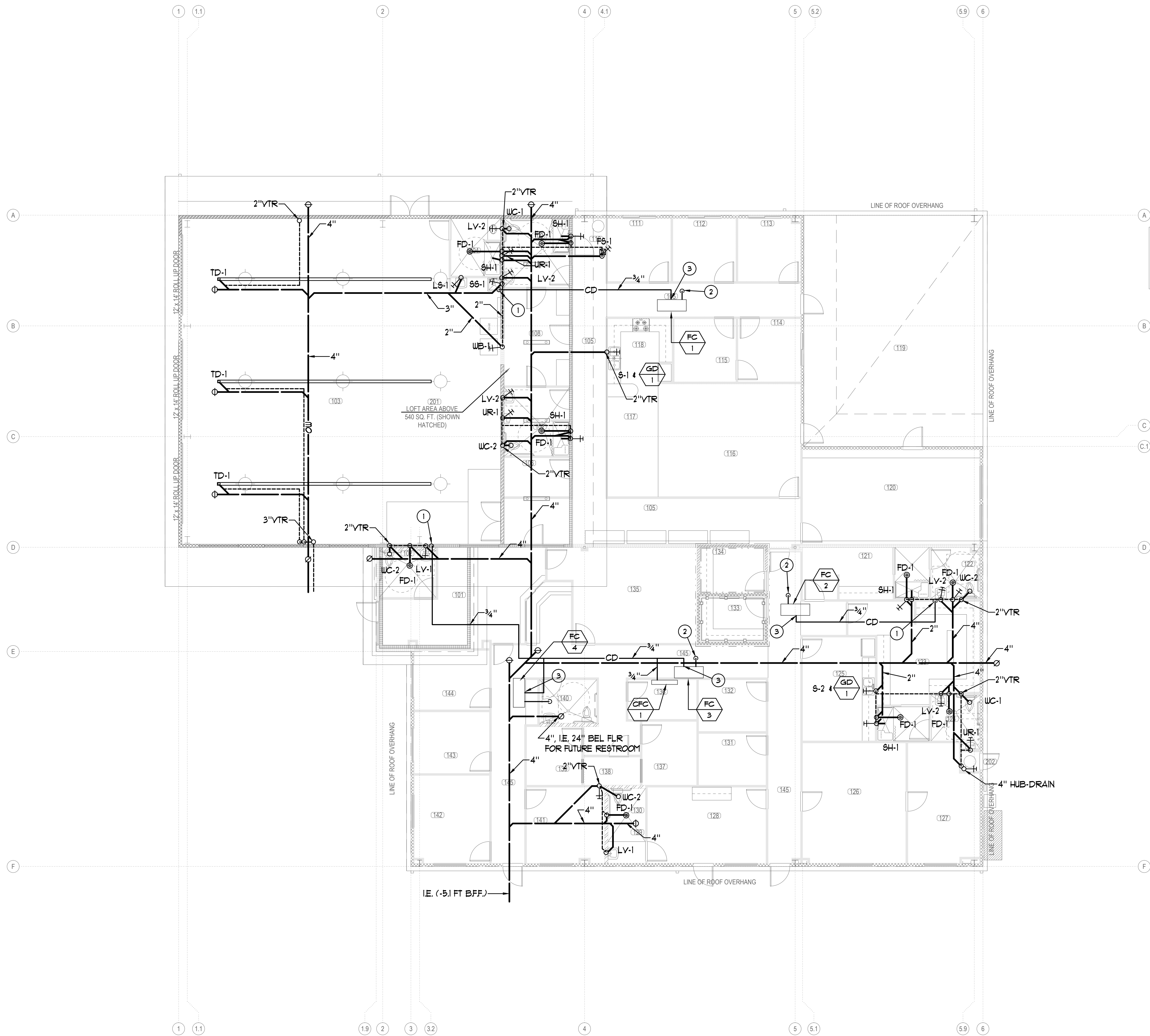
REVISIONS

NO.	DESCRIPTION	DATE
-----	-------------	------

SHEET TITLE

SITE PLAN

DATE: 09/18/17	SCALE: 1" = 20'
DRAWN BY:	DATABASE:
CHECKED BY:	SHEET NUMBER:
PROJECT NO:	P 2.0



KEYNOTES:

- 1 3/4" CONDENSATE DRAIN DOWN INSIDE WALL AND OUT THRU WALL AND CONNECT TO LAVATORY TAILPIECE.
- 2 3/4" OVERFLOW DRAIN THROUGH CEILING. PROVIDE ESCUTCHEON.
- 3 3/4" TRAPPED & VENTED CONDENSATE

GENERAL NOTES:

- SLOPE WASTE @ 2% (TYP)
- SLOPE CONDENSATE @ 1% (TYP)

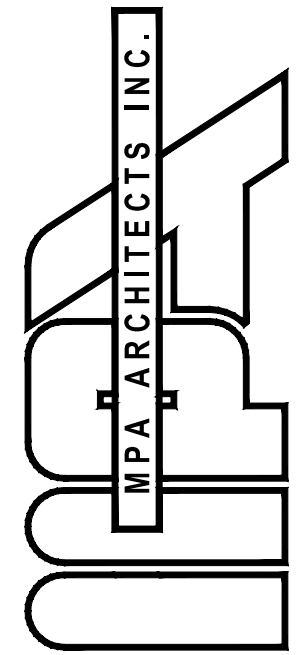
DWV FLOOR PLAN

1/8"=1'-0"

A

BTA
ENGINEERS, INC.

8845 ERMA RD SUITE 204
SAN DIEGO, CA 92131
PH 858 716-8801 FAX 858 433-7587
JOB # 1574.00



3578 30th Street
San Diego, CA 92104
V. 619.236.0595
F. 619.236.0557
www.mpa-architects.com

MEMBER
AMERICAN INSTITUTE OF ARCHITECTS

CLIENT

COUNTY OF IMPERIAL
PLANNING & DEV.
SERVICES DEPT
801 MAIN STREET
EL CENTRO, CA 92243
(760) 482-4236

PROJECT

A PROPOSED PUBLIC SAFETY FACILITY:
WINTERHAVEN
PUBLIC SAFETY FACILITY
518 RAILROAD AVENUE
WINTERHAVEN, CA 92283

REVISIONS

NO.	DESCRIPTION	DATE
-----	-------------	------

SHEET TITLE

DWV PLAN

DATE: 09/18/17 SCALE: 1/8" = 1'-0"

DRAWN BY: DATABASE:

CHECKED BY: SHEET NUMBER:

PROJECT NO: **P 3.0**



WATER FLOOR PLAN

1/8"=1'-0"

A

KEYNOTES:

- 1 WATER HAMMER ARRESTOR SIZE A WITH ACCESS PANEL
- 2 TRAP PRIMER TO SERVE DRAIN

GENERAL NOTES:

ALL VALVES SHALL BE PROVIDED WITH AN ACCESS PANEL. PROVIDE FIRE RATED ACCESS PANEL WHERE VALVES ARE LOCATED IN A RATED WALL OR CEILING.

PRESSURIZED COPPER WATER PIPES ARE NOT ALLOWED BELOW GROUND. ONLY TYPE K COPPER TRAP PRIMER PIPES MAY BE PLACED UNDERGROUND IF WRAPPED WITH (2) LAYERS OF 10 MIL PLUMBERS TAPE.



3578 30th Street
San Diego, CA 92104
V. 619.236.0595
F. 619.236.0557

www.mpa-architects.com

MEMBER
AMERICAN INSTITUTE OF ARCHITECTS

CLIENT

COUNTY OF IMPERIAL
PLANNING & DEV.
SERVICES DEPT
801 MAIN STREET
EL CENTRO, CA 92243
(760) 482-4236

PROJECT

A PROPOSED PUBLIC SAFETY FACILITY:
WINTERHAVEN
PUBLIC SAFETY FACILITY
518 RAILROAD AVENUE
WINTERHAVEN, CA 92283

REVISIONS

NO.	DESCRIPTION	DATE
-----	-------------	------

SHEET TITLE

WATER PLAN

DATE: 09/19/17 SCALE: 1/8" = 1'-0"

DRAWN BY: DATABASE:

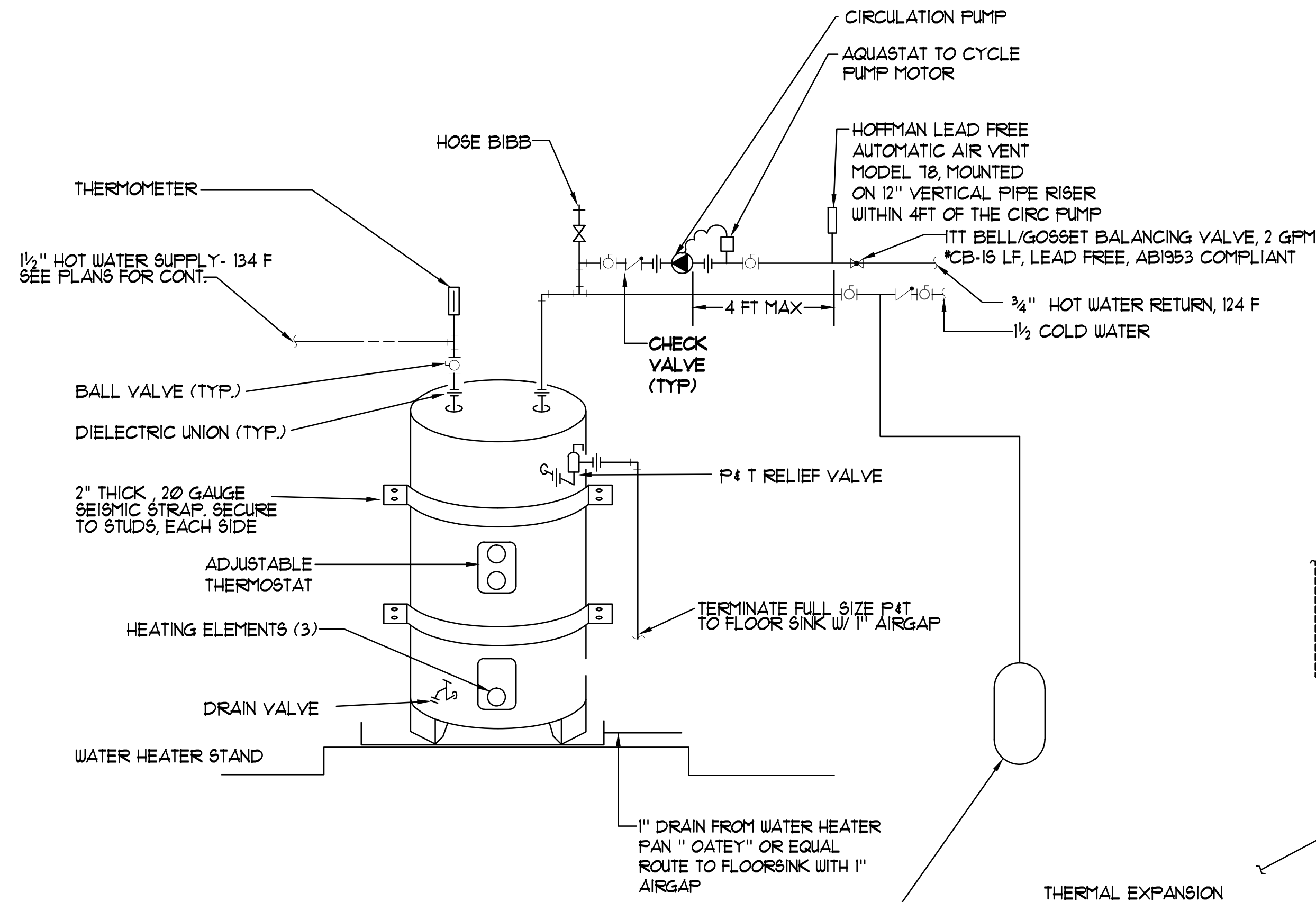
CHECKED BY: SHEET NUMBER:

PROJECT NO: P 3.1

BTA
ENGINEERS, INC.

9845 ERMA RD SUITE 204
SAN DIEGO, CA 92131
PH 858 716-8801 FAX 858 433-7587
JOB # 1574-00



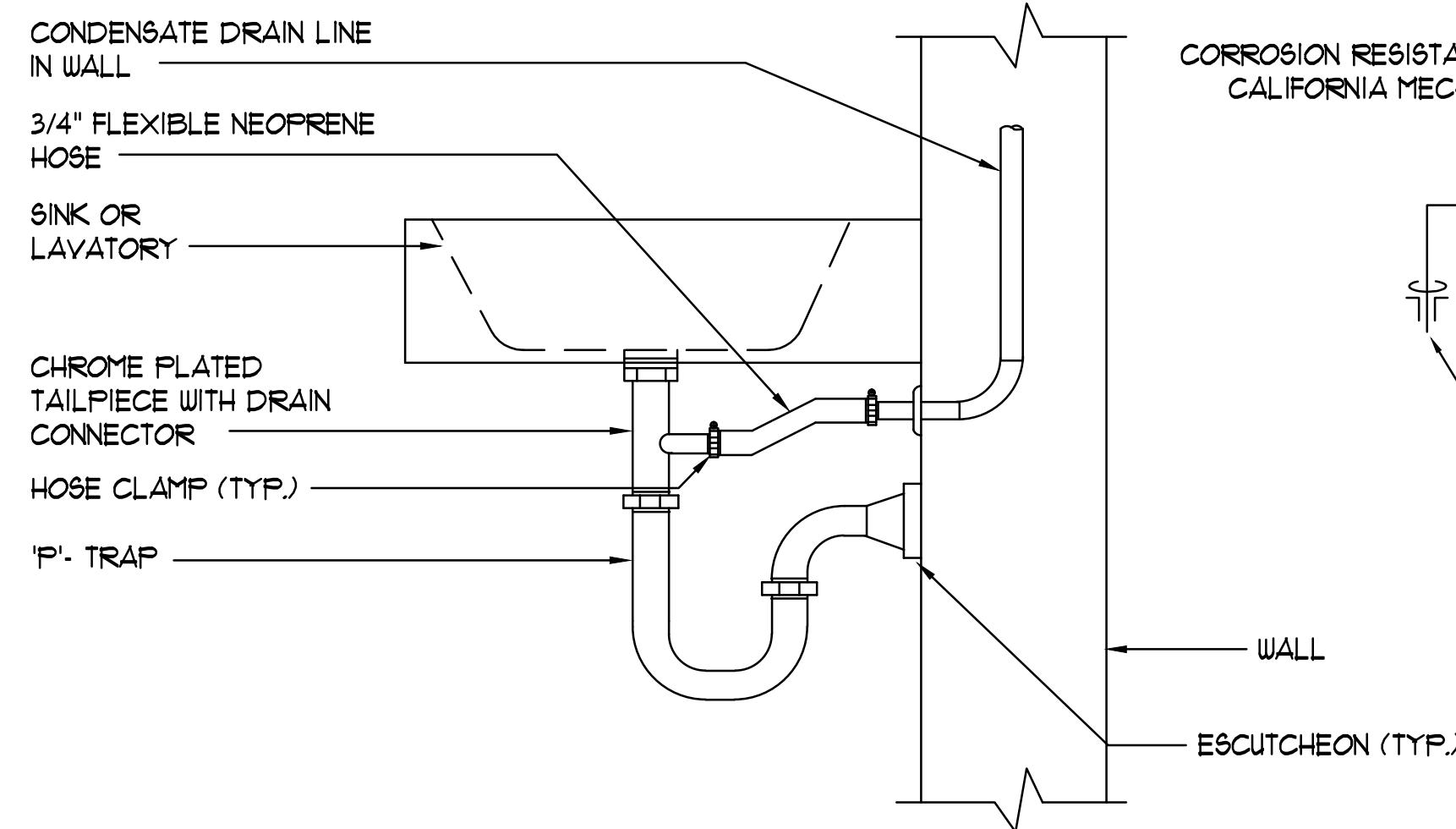


WATER HEATER NOTES:

1. PROVIDE AND INSTALL (2) 20 GAUGE STRAPS TO ADEQUATELY BRACE THE WATER HEATER TO RESIST SEISMIC FORCES. ONE STRAP AT TOP 1/3 OF TANK AND ONE STRAP AT BOTTOM 1/3 OF THE TANK, ANCHORED TO THE WALL. MAINTAIN 4 INCHES OF CLEARANCE BETWEEN THE WATER HEATER CONTROLS AND THE SEISMIC STRAPS.
2. SEISMIC STRAPPING OF WATER HEATER SHALL COMPLY WITH SECTION 508.0 CFC
3. PROVIDE EXPANSION TANK OR OTHER APPROVED METHOD OF RELIEVING PRESSURE PER SECTION 608.3 CFC.
4. THE COLD WATER PIPING AND RECIRCULATION LOOP PIPING SHALL NOT BE CONNECTED TO THE HOT WATER STORAGE TANK DRAIN PORT

5 ELECTRIC WATER HEATER

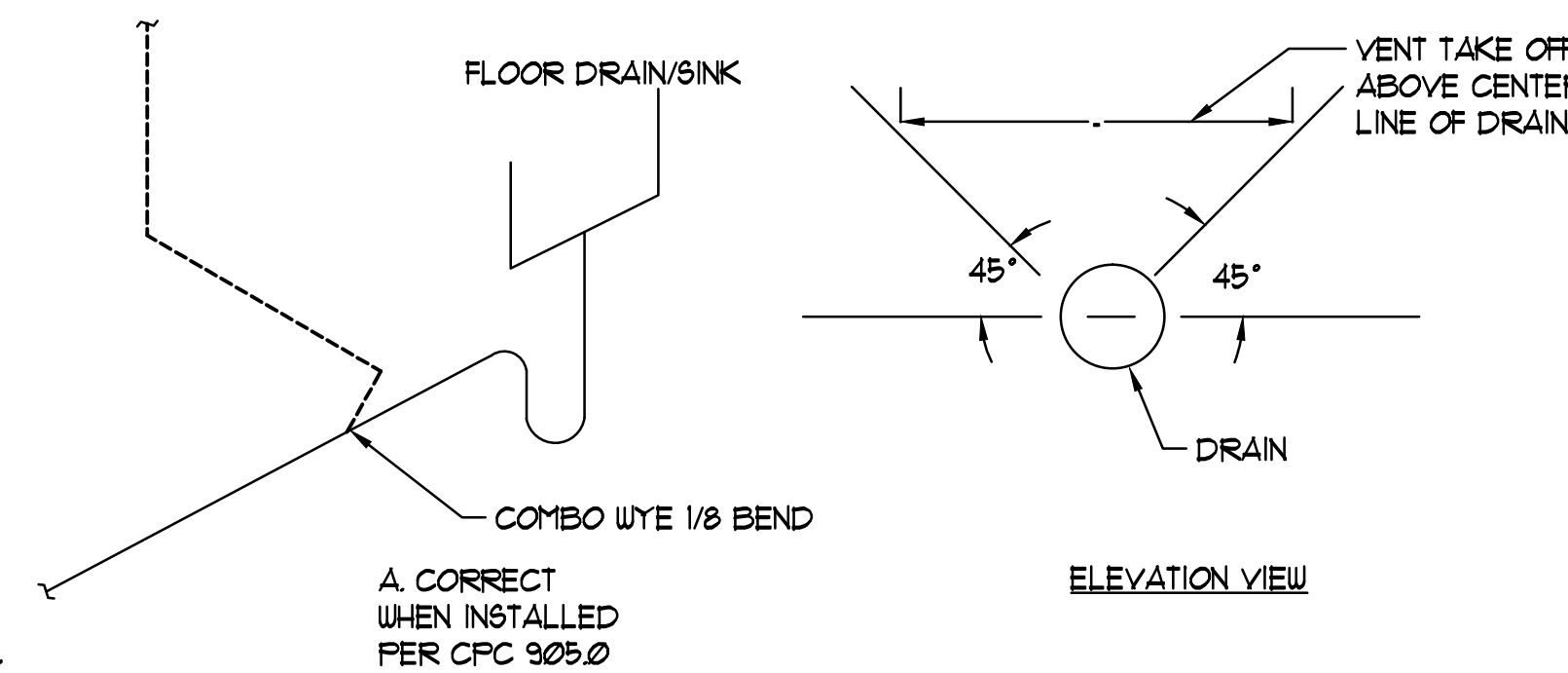
SCALE: NTS



• CONCEAL CONDENSATE PIPE/HOSE BELOW LAVATORY

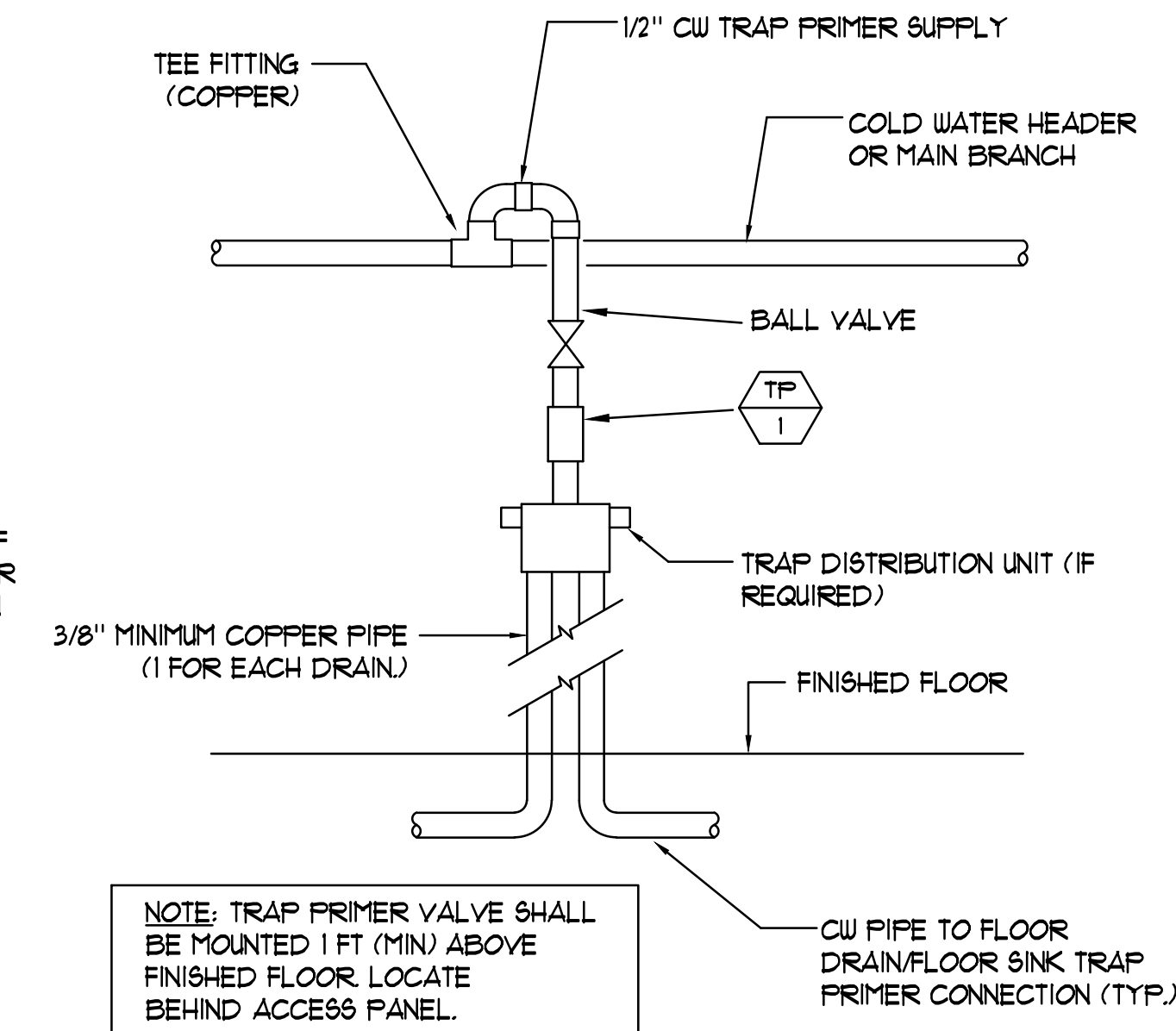
6 CONDENSATE TO SINK P-TRAP

SCALE: NONE



3 VENTING FLOORSINK/DRAIN

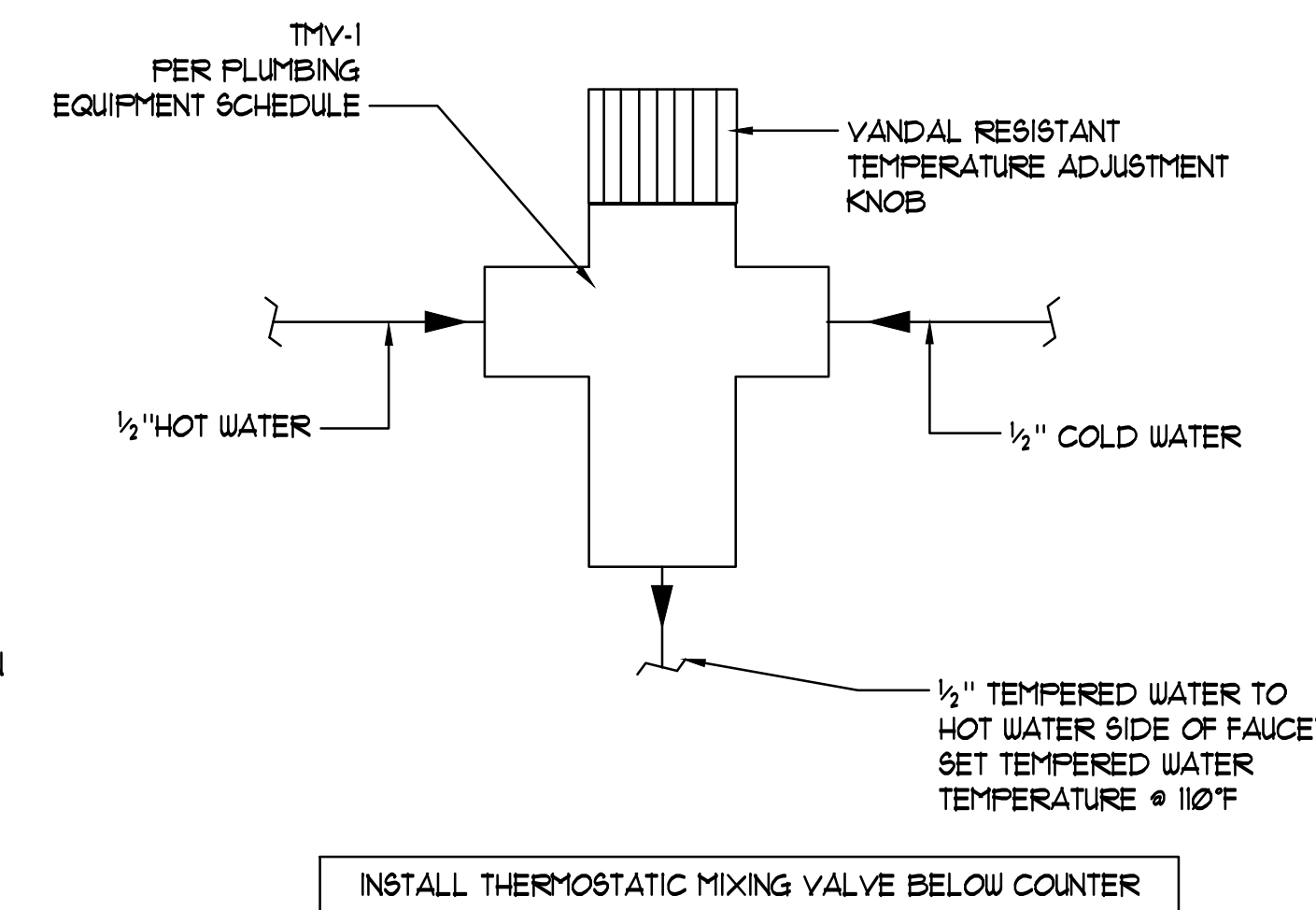
SCALE: NTS



NOTE: TRAP PRIMER VALVE SHALL BE MOUNTED 1 FT (MIN) ABOVE FINISHED FLOOR. LOCATE BEHIND ACCESS PANEL.

1 TRAP PRIMER DETAIL

SCALE: NONE

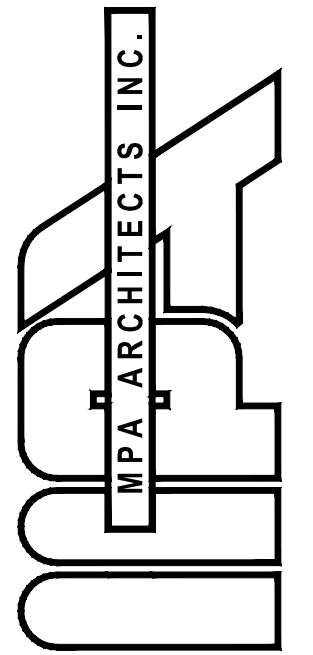
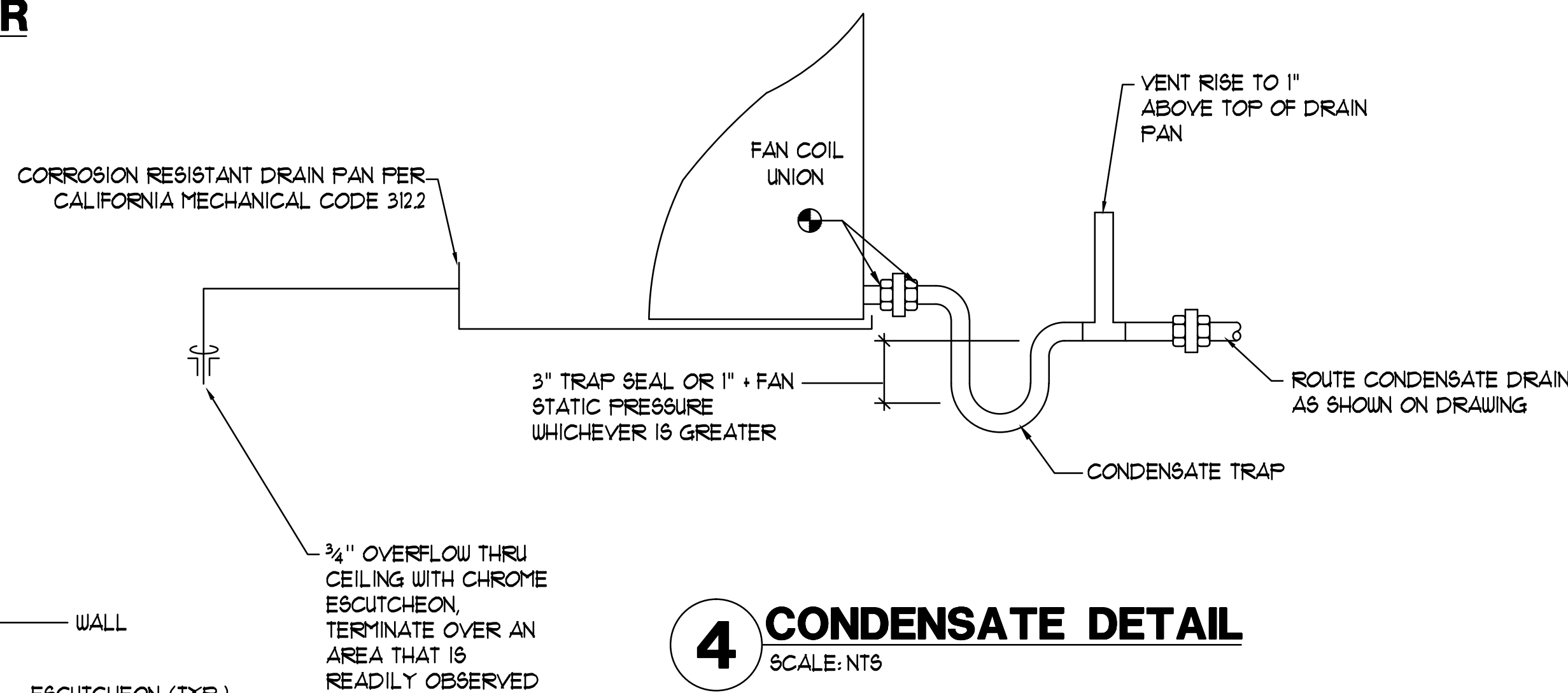


2 THERMOSTATIC MIXING VALVE DETAIL

SCALE: NONE

4 CONDENSATE DETAIL

SCALE: NTS



3578 30th Street
San Diego, CA 92104
V. 619.236.0595
F. 619.236.0557

www.mpa-architects.com

MEMBER
AMERICAN INSTITUTE OF ARCHITECTS

CLIENT

COUNTY OF IMPERIAL
PLANNING & DEV.
SERVICES DEPT
801 MAIN STREET
EL CENTRO, CA 92243
(760) 482-4236

PROJECT

A PROPOSED PUBLIC SAFETY FACILITY:
WINTERHAVEN
PUBLIC SAFETY FACILITY
518 RAILROAD AVENUE
WINTERHAVEN, CA 92283

REVISIONS

NO.	DESCRIPTION	DATE

SHEET TITLE

DETAILS

DATE	SCALE
09/19/17	NONE

DRAWN BY	CHECKED BY

PROJECT NO.	SHEET NUMBER
	P 4.0

BTA
ENGINEERS, INC.
8845 ERMA RD SUITE 204
SAN DIEGO, CA 92131
PH 858 715-8801 FAX 858 433-7587
JOB # 1574.00



Copyright 2018, MPA Architects, Inc. All rights reserved.