

(PANEL ON STANDBY EMERGENCY GENERATOR)

VOLTS 120/208
PHASE 3
WIRE 4
A.I.C. SERIES RATED

HVAC

FEEDER 4#4/OCU, 1#4GND, 2 1/2" C

MAINS BUS MOUNTING LUGS ONLY 225 AMPS FLUSH

LOCATION	WATTAGE			LTG	REC	MIS	CIR	BKR	BKR	CIR	MIS	REC	LTG	WATTAGE			LOCATION
	PH.A	PH.B	PH.C											PH.A	PH.B	PH.C	
CU/1	2587						1	40	15	2				780			FC/1
CU/1		2587					3	20	15	4				780			FC/1
CU/1			2587				5	3	15	6				780			FC/2
CU/2	2238						7	30	15	8				780			FC/2
CU/2		2238					9	30	15	10				530			FC/2
CU/2			2238				11	3	15	12				530			FC/3
CU/3	1528						13	20	15	14				780			FC/3
CU/3		1528					15	3	15	16				780			FC/4
CU/3			1528				17	3	15	18							FC/4
CU/4	2238						19	30	15	20							
CU/4		2238					21	3	15	22							
CU/4			2238				23	3	15	24							
EF/1	480						25	15	15	26							
EF/1		480					27	3	15	28							
EF/1			480				29	3	15	30							
UH/1	5000						31	60	15	32							
UH/1		5000					33	3	15	34							
UH/1			5000				35	3	15	36							
UH/2	5000						37	60	15	38							
UH/2		5000					39	3	15	40							
UH/2			5000				41	3	15	42							
TOTAL	PH.A	21411					PH.B	21161						PH.C	20381		
TOTAL WATTS		62953					AMPS	174.8						LCL AMPS	4.6		

(PANEL ON STANDBY EMERGENCY GENERATOR)

VOLTS 120/208
PHASE 3
WIRE 4
A.I.C. SERIES RATED

PEM

FEEDER 4# 1/OCU, 1#6GND, 2" C

MAINS BUS MOUNTING LUGS ONLY 200 AMPS FLUSH

LOCATION	WATTAGE			LTG	REC	MIS	CIR	BKR	BKR	CIR	MIS	REC	LTG	WATTAGE			LOCATION
	PH.A	PH.B	PH.C											PH.A	PH.B	PH.C	
GARAGE RECEPT	1200						1	20/1	40	2				4000			RANGE/OVEN
GARAGE RECEPT		1200					3	20/1	2	4				4000			RANGE/OVEN
GARAGE RECEPT			1200				5	20/1	20/1	6				1500			SMALL APPL
LOCKER RECEPT	540						7	20/1	20/1	8				1500			SMALL APPL
LOCKER RECEPT		360					9	20/1	20/1	10				1200			D.W.
BEDROOM RECEPT			900				11	20/1	20/1	12							G.D.
BEDROOM RECEPT	1080						13	20/1	20/1	14				750			REFRIG
LOCKER RECEPT		180					15	20/1	20/1	16				180			LIVING RECEPT
LOCKER RECEPT			180				17	20/1	20/1	18				180			LIVING RECEPT
LOCKER RECEPT	180						19	20/1	20/1	20				1080			LIVING RECEPT
LOCKER RECEPT		180					21	20/1	20/1	22				540			PATIO RECEPT
SERVER RECEPT			500				23	20/1	20/1	24				750			FITNESS RECEPT
SERVER RECEPT	500						25	20/1	20/1	26				750			FITNESS RECEPT
BATH GFI RECEPT			900				27	20/1	20/1	28				750			FITNESS RECEPT
G.D. RECEPT			1127				29	20/1	20/1	30				750			FITNESS RECEPT
REFRIG RECEPT		750					31	20/1	20/1	32				750			FITNESS RECEPT
SMALL APPLIANCE		1500					33	20/1	20/1	34				750			FITNESS RECEPT
SMALL APPLIANCE			1500				35	20/1	20/1	36				900			HALL RECEPT
WASHER	1500						37	30/1	20/1	38				286			HOOD
DRYER		2500					39	30/1	20/1	40				40			CP/1
DRYER			2500				41	2	20/1	42							
TOTAL	PH.A	15080					PH.B	14240						PH.C	13114		
TOTAL WATTS		42434					AMPS	117.8						LCL AMPS	-0-		

ELECTRICAL LEGEND

	RECESSED MTD. FLOOR.	4W	4-WIRE
	HIGH BAY LIGHT FIXTURE	A,AMPS	AMPERES
	FLUOR. STRIP LIGHT	A.F.F.	ABOVE FINISHED FLOOR
	SURFACE MTD. LIGHT FIXTURE	A.I.C.	AMPERE INTERRUPTING CAPACITY
	RECESSED DOWN LIGHT FIXTURE	B.C.	BARE COPPER
	WALL MTD. LIGHT FIXTURE	C., COND	CONDUIT
	RECESSED PANEL	C.O.	CONDUIT ONLY
	SPST DIMMER SWITCH, +44"	C/B	CIRCUIT BREAKER
	SPST TOGGLE SWITCH, +44"	CKT	CIRCUIT
	SPST MANUAL ON 30 MINUTE OCCUPANT MOTION SENSOR SWITCH, +44"	CONN	CONNECTED
	THREE-WAY SWITCH +44" A.F.F. U.O.N.	CORR.	CORRIDOR
	CONVENIENCE DUPLEX OUTLET +15" CENTERLINE A.F.F. - U.O.N.	CU	COPPER
	FOURPLEX CONVENIENCE OUTLET +15" CENTERLINE A.F.F. - U.O.N.	ELECT.	ELECTRICAL
	FUSED DISCONNECT SWITCH	EXH/EF	EXHAUST
	JUNCTION BOX WITH FLEX CONNECTION	EXTER.	EXTERIOR
	WALL MTD. TELEPHONE OUTLET +15" CENTERLINE A.F.F.	GFI	GROUND FAULT INTERRUPTING
	WALL MTD. DATA OUTLET +15" CENTERLINE A.F.F.	GND.	GROUND
	NO. OF POLES	LTG.	LIGHTING
	SWITCH SIZE, AMPS	M.P.	MULTI-PURPOSE
	FUSE SIZE, AMPS	M/C	MACHINE
	FUSE CLASS TYPE	MECH.	MECHANICAL
	BRANCH CIRCUIT HOME-RUN WITH PANEL & CIRCUIT DESIGNATION. HASH MARKS INDICATE NO. OF #12 WIRE U.O.N.	MTD.	MOUNTED
	TELEPHONE SYSTEM CONDUIT WITH PULL-ROPE	NFPA	NATIONAL FIRE PROTECTION ASSOCIATION
	EMERGENCY SYSTEM CONDUIT & WIRING	P	POLE
	CONDUIT WITH #12 WIRE, EACH TICK INDICATES ONE #12 WIRE.	PH,~	PHASE
	LIGHT FIXTURE DESIGNATION. SEE LIGHT FIXTURE SCHEDULE.	PNL	PANEL
	TV OUTLET WITH COAX +15" A.F.F. CENTERLINE	RECEP.	RECEPTACLE
	CONVENIENCE DUPLEX OUTLET +15" A.F.F. CENTERLINE HALF SWITCHED, HALF HOT.	RM.	ROOM
	SPECIAL PURPOSE RECEPTACLE, SIZE PER PANEL.	TOIL.	TOILET
	WALL MTD. PLUG MOLD	TYP.	TYPICAL
	DROP CHORD RECEPTACLE	U.O.N.	UNLESS OTHERWISE NOTED
	EXHAUST FAN	U/G	UNDER GROUND
	SMOKE ALARM, 120V W/ BATTERY BACKUP.	W,WATT	WATTAGE
	COMBO PLATE TV OUTLET WITH COAX AND TELEPHONE OUTLET +15" AFF CENTERLINE	W.P.	WEATHERPROOF
		EM	EMERGENCY
		NL	NIGHT LIGHT

(PANEL ON STANDBY EMERGENCY GENERATOR)

VOLTS 120/208
PHASE 3
WIRE 4
A.I.C. SERIES RATED

EM

FEEDER PL 4 #1/OCU, 1#2 GND (2)2" C

MAINS BUS MOUNTING LUGS ONLY 400 AMP FLUSH

LOCATION	WATTAGE			LTG	REC	MIS	CIR	BKR	BKR	CIR	MIS	REC	LTG	WATTAGE			LOCATION
	PH.A	PH.B	PH.C											PH.A	PH.B	PH.C	
EXIT LTG	50						1	20/1	20/1	2				377			EXT. WALL LTG
GARAGE LTG		1296					3	20/1	20/1	4				405			POLE LTG
RESTROOM LTG			400				5	20/1	20/1	6				800			LOCKER/LOUNGE LTG
BED LTG	750						7	20/1	20/1	8							
LIVING LTG		800					9	20/1	20/1	10							
FITNESS HALL LTG			1232				11	20/1	20/1	12							
RECEPTION/HALL LTG	832						13	20/1	20/1	14							
OFFICE LTG		800					15	20/1	20/1	16							
CONFERENCE LTG			1000				17	20/1	20/1	18							
							19	20/1	20/1	20							
							21	20/1	20/1	22							
							23	20/1	20/1	24							
PANEL 'PEM'	15080						25	150	20/1	26				360			REPORT RECEPT
PANEL 'PEM'		14240					27	20/1	20/1	28				360			REPORT RECEPT
PANEL 'PEM'			13114				29	3	20/1	30				360			BOOKING RECEPT
CONFERENCE RECEPT							31	20/1	20/1	32				720			OFFICE RECEPT
RECEPTION RECEPT	720						33	20/1	20/1	34				720			OFFICE RECEPT
GENERATOR HTR		900					35	20/1	20/1	36				1080			HALL RECEPT
GENERATOR CHARGER	500		1500				37	20/1	20/1	38				720			OFFICE RECEPT
GENERATOR RECEPT.		180					39	20/1	20/1	40				720			OFFICE RECEPT
GATE MOTOR			1127				41	20/1	20/1	42				1000			COPY RECEPT
							43	20/1	20/1	44							
							45	20/1	20/1	46							
							47	20/1	20/1	48							
EXHAUST FANS	500						49	20/1	15	50				1040			CCU/1 - COMPUTER
EXHAUST FANS		500					51	20/1	2	52				1040			CCU/1 - COMPUTER
EXHAUST FANS			500				53	20/1	2	54							
							55	20/1	2	56							
							57	20/1	2	58							
							59	20/1	2	60							
WH/1	6000						61	70/1	20/1	62				1127			GARAGE DOOR
WH/1		6000					63	20/1	20/1	64				1127			GARAGE DOOR
WH/1			6000				65	3	20/1	66				1127			GARAGE DOOR
TOTAL	PH.A	27189					PH.B	27781						PH.C	25486		
TOTAL WATTS		80456					AMPS	223.4						LCL AMPS	10.2		

PROVIDE SPLIT BUS PANEL AS REQ'D BY CALIFORNIA ENERGY COMMISSION STANDARDS 130.5-B. DESEGREGATION OF ELECTRICAL CIRCUITS. PROVIDE SIEMENS "P2 SPB" PANEL.

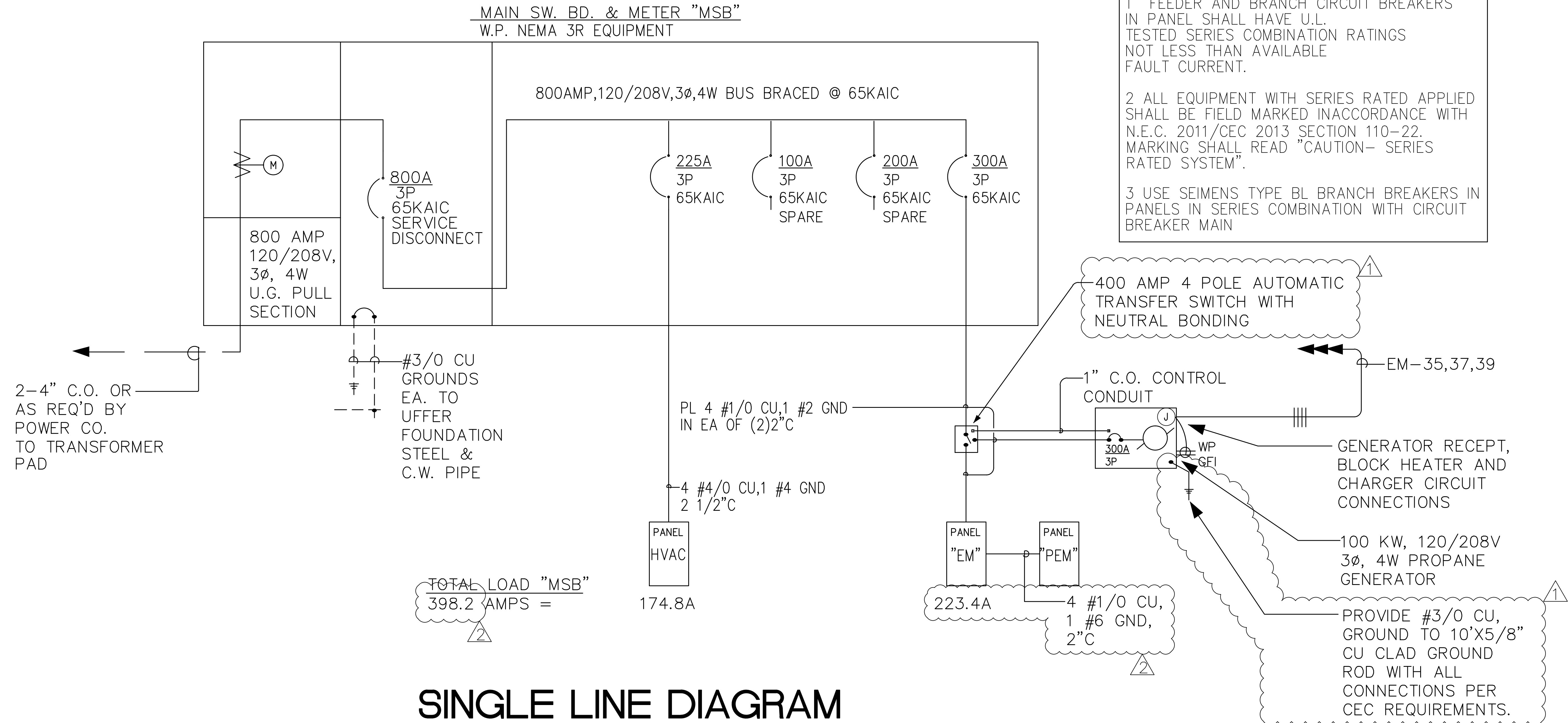
GENERAL NOTES

- ALL ELECTRICAL MATERIALS AND EQUIPMENT SHALL BE NEW AND SHALL BE LISTED BY UNDERWRITERS LABORATORIES AND BEAR THEIR LABEL OR LISTED AND CERTIFIED BY A NATIONALLY RECOGNIZED TESTING AUTHORITY WHERE UL DOES NOT HAVE A LISTING. CUSTOM MADE EQUIPMENT MUST HAVE COMPLETE TEST DATA SUBMITTED BY THE MANUFACTURER ATTESTING TO ITS SAFETY.
- THE CONTRACTOR SHALL VISIT THE SITE INCLUDING ALL AREAS INDICATED ON THE DRAWINGS. HE SHALL THOROUGHLY FAMILIARIZE HIMSELF WITH THE EXISTING CONDITIONS AND BY SUBMITTING A BID ACCEPTS CONDITIONS UNDER WHICH HE SHALL BE REQUIRED TO PERFORM HIS WORK.
- IT SHALL BE THE ELECTRICAL CONTRACTOR'S RESPONSIBILITY TO OBTAIN A COMPLETE SET OF DRAWINGS AND SPECIFICATIONS. HE SHALL CHECK THE DRAWINGS OF THE OTHER TRADES AND SHALL CAREFULLY READ THE ENTIRE SPECIFICATIONS AND DETERMINE HIS RESPONSIBILITIES. FAILURE TO DO SO SHALL NOT RELEASE THE CONTRACTOR FROM DOING THE WORK IN COMPLETE ACCORDANCE WITH THE DRAWINGS AND SPECIFICATIONS.
- THE CONTRACTOR SHALL SECURE AND PAY FOR ALL PERMITS AND FEES NECESSARY FOR EXECUTION AND COMPLETION OF ELECTRICAL WORK, INCLUDING ALL CHARGES BY THE LOCAL GOVERNMENT AGENCIES.
- THE CONTRACTOR SHALL COORDINATE HIS WORK WITH OTHER TRADES AT THE SITE. ANY COST TO ROUTE CONDUIT OTHER THAN AS SHOWN ON THE PLANS SHALL BE INCURRED BY THE CONTRACTOR.
- ALL INTERRUPTION OF ELECTRICAL LINES SHALL BE KEPT TO MINIMUM. HOWEVER, WHEN AN INTERRUPTION IS NECESSARY, THE SHUTDOWN MUST BE COORDINATED WITH THE POWER COMPANY AND THE OWNER.
- ALL FINAL CONNECTIONS TO OWNER-FURNISHED EQUIPMENT SHALL BE MADE BY THE CONTRACTOR.
- IT SHALL BE THE CONTRACTOR'S RESPONSIBILITY TO DO ALL CORING, SAW CUTTING, PATCHING, AND REFINISHING OF EXISTING WALLS AND SURFACES WHEREVER IT IS NECESSARY FOR HIM TO PENETRATE FOR HIS WORK. ALL OPENINGS SHALL BE SEALED TO MEET THE FIRE RATINGS OF THE PARTICULAR WALL, FLOOR OR CEILING.
- WHenever a discrepancy exists in quantity or size of conduit, wire, equipment, devices, circuit breakers, transformers, etc. the contractor shall be responsible for providing and installing all materials and services required by the strictest conditions noted on the drawings and/or in the specifications to ensure complete and operable systems as required by the owner and the architect.
- IT SHALL BE THE CONTRACTOR'S RESPONSIBILITY TO VERIFY THE TYPE OF CEILING SYSTEMS AND TO FURNISH APPROVED LIGHTING FIXTURES OF THE TYPE REQUIRED FOR MOUNTING IN SUBJECT CEILINGS. WHERE FIXTURES ARE RECESSED IN PLASTER CEILINGS, THEY SHALL BE COMPLETE WITH THE NECESSARY MOUNTING HARDWARE AND PLASTER FRAMES.
- EXACT LOCATIONS OF ALL CEILING MOUNTED LIGHTING FIXTURES AND DEVICES SHALL BE AS INDICATED ON THE ARCHITECTURAL REFLECTED CEILING PLANS.

NO.	DESCRIPTION	DATE
1	PLAN CHECK	02/03/17
2	PLAN CHECK	03/09/17
3	PLAN CHECK	05/18/17

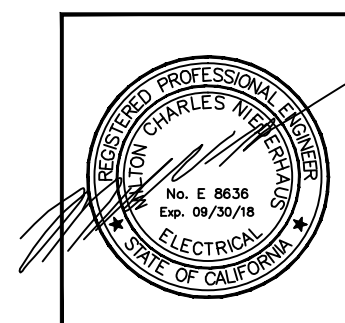
DATE	EDUC.	TITLE
DATE	EDUC.	TITLE
DATE	EDUC.	TITLE
DATE	EDUC.	TITLE

NOTE
1 FEEDER AND BRANCH CIRCUIT BREAKERS IN PANEL SHALL HAVE U.L. TESTED SERIES COMBINATION RATINGS NOT LESS THAN AVAILABLE FAULT CURRENT.
2 ALL EQUIPMENT WITH SERIES RATED APPLIED SHALL BE FIELD MARKED IN ACCORDANCE WITH N.E.C. 2011/CEC 2013 SECTION 110-22. MARKING SHALL READ "CAUTION- SERIES RATED SYSTEM".
3 USE SEIMENS TYPE BL BRANCH BREAKERS IN PANELS IN SERIES COMBINATION WITH CIRCUIT BREAKER MAIN



SINGLE LINE DIAGRAM

NOT TO SCALE



NEDC, INC.
ELECTRICAL DESIGN CONSULTANTS
AN ENGINEERING CORPORATION
3103 FALCON STREET, SUITE J
SAN DIEGO, CALIFORNIA 92103
(619) 278-0078 FAX (619) 278-0078
NEDC@FACBELLET

PLOT DATE 05-18-17

STATE OF CALIFORNIA
INDOOR LIGHTING
CERTIFICATE OF COMPLIANCE
Indoor Lighting
Project Name: WINTERHAVEN PUBLIC SAFETY FACILITY Date Prepared: 2/23/2016

CA Building Energy Efficiency Standards - 2013 Nonresidential Compliance August 2015

STATE OF CALIFORNIA
INDOOR LIGHTING
CERTIFICATE OF COMPLIANCE
Indoor Lighting
Project Name: WINTERHAVEN PUBLIC SAFETY FACILITY Date Prepared: 2/23/2016

CA Building Energy Efficiency Standards - 2013 Nonresidential Compliance August 2015

STATE OF CALIFORNIA
INDOOR LIGHTING
CERTIFICATE OF COMPLIANCE
Indoor Lighting
Project Name: WINTERHAVEN PUBLIC SAFETY FACILITY Date Prepared: 2/23/2016

CA Building Energy Efficiency Standards - 2013 Nonresidential Compliance August 2015

STATE OF CALIFORNIA
INDOOR LIGHTING
CERTIFICATE OF COMPLIANCE
Indoor Lighting
Project Name: WINTERHAVEN PUBLIC SAFETY FACILITY Date Prepared: 2/23/2016

CA Building Energy Efficiency Standards - 2013 Nonresidential Compliance August 2015

STATE OF CALIFORNIA
INDOOR LIGHTING
CERTIFICATE OF COMPLIANCE
Indoor Lighting
Project Name: WINTERHAVEN PUBLIC SAFETY FACILITY Date Prepared: 2/23/2016

CA Building Energy Efficiency Standards - 2013 Nonresidential Compliance August 2015

STATE OF CALIFORNIA
INDOOR LIGHTING
CERTIFICATE OF COMPLIANCE
Indoor Lighting
Project Name: WINTERHAVEN PUBLIC SAFETY FACILITY Date Prepared: 2/23/2016

CA Building Energy Efficiency Standards - 2013 Nonresidential Compliance August 2015

STATE OF CALIFORNIA
INDOOR LIGHTING
CERTIFICATE OF COMPLIANCE
Indoor Lighting
Project Name: WINTERHAVEN PUBLIC SAFETY FACILITY Date Prepared: 2/23/2016

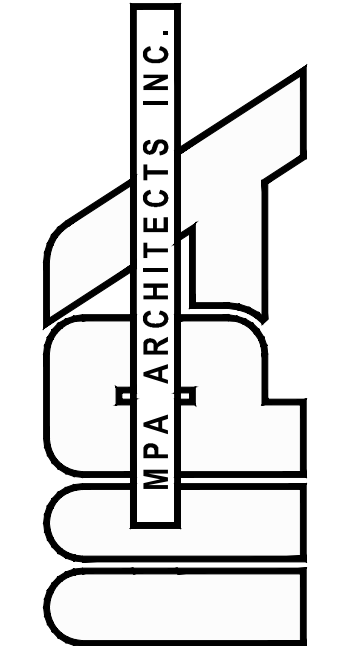
CA Building Energy Efficiency Standards - 2013 Nonresidential Compliance August 2015

STATE OF CALIFORNIA
INDOOR LIGHTING
CERTIFICATE OF COMPLIANCE
Indoor Lighting
Project Name: WINTERHAVEN PUBLIC SAFETY FACILITY Date Prepared: 2/23/2016

CA Building Energy Efficiency Standards - 2013 Nonresidential Compliance August 2015

STATE OF CALIFORNIA
INDOOR LIGHTING - LIGHTING CONTROLS
CERTIFICATE OF COMPLIANCE
Indoor Lighting - Lighting Controls
Project Name: WINTERHAVEN PUBLIC SAFETY FACILITY Date Prepared: 2/23/2016

CA Building Energy Efficiency Standards - 2013 Nonresidential Compliance August 2015



3578 30th Street
San Diego, CA 92104
V. 619.236.0595
F. 619.236.0557

MEMBER
AMERICAN INSTITUTE OF ARCHITECTS

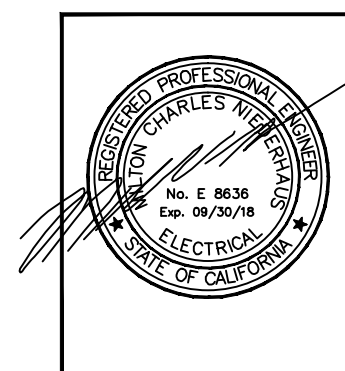
CLIENT

PROJECT

WINTERHAVEN
PUBLIC SAFETY FACILITY

REVISIONS

NO.	DESCRIPTION	DATE
1	PLAN CHECK	02/03/17
2	PLAN CHECK	03/03/17
7		08/19/17



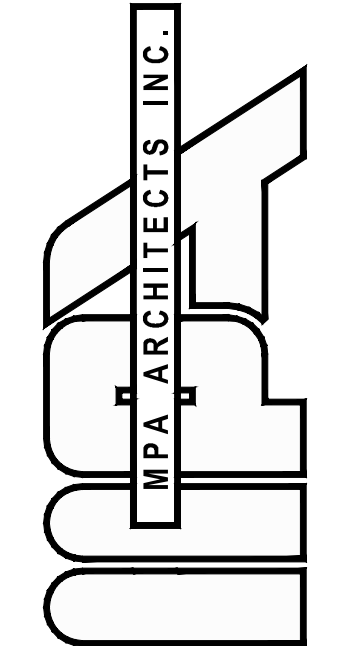
NEDC
NEDC, INC.
ELECTRICAL DESIGN CONSULTANTS
AN ENGINEERING CORPORATION

3103 FALCON STREET, SUITE J
SAN DIEGO, CALIFORNIA 92103
(619) 278-0078 FAX (619) 278-0078
NEDC@FACBELL.NET

SHEET TITLE
ELECTRICAL T-24
FORMS

DATE	ISSUE	TITLE
05-18-17		

DRAWN BY: TITLE DATE: TITLE
CHECKED BY: TITLE SHEET NUMBER: E9.0
PROJECT NO: TITLE



3578 30th Street
San Diego, CA 92104
V. 619.236.0595
F. 619.236.0557
www.mpa-architects.com

MEMBER
AMERICAN INSTITUTE OF ARCHITECTS

CLIENT

PROJECT

REVISIONS

NO.	DESCRIPTION	DATE
1	PLAN CHECK	02/03/17
2	PLAN CHECK	03/03/17
3		05/09/17

WINTERHAVEN PUBLIC SAFETY FACILITY

REVISIONS

NO.	DESCRIPTION	DATE
1	PLAN CHECK	02/03/17
2	PLAN CHECK	03/03/17
3		05/09/17

WINTERHAVEN PUBLIC SAFETY FACILITY

REVISIONS

NO.	DESCRIPTION	DATE
1	PLAN CHECK	02/03/17
2	PLAN CHECK	03/03/17
3		05/09/17

WINTERHAVEN PUBLIC SAFETY FACILITY

REVISIONS

NO.	DESCRIPTION	DATE
1	PLAN CHECK	02/03/17
2	PLAN CHECK	03/03/17
3		05/09/17

WINTERHAVEN PUBLIC SAFETY FACILITY

REVISIONS

NO.	DESCRIPTION	DATE
1	PLAN CHECK	02/03/17
2	PLAN CHECK	03/03/17
3		05/09/17

WINTERHAVEN PUBLIC SAFETY FACILITY

REVISIONS

NO.	DESCRIPTION	DATE
1	PLAN CHECK	02/03/17
2	PLAN CHECK	03/03/17
3		05/09/17

WINTERHAVEN PUBLIC SAFETY FACILITY

REVISIONS

NO.	DESCRIPTION	DATE
1	PLAN CHECK	02/03/17
2	PLAN CHECK	03/03/17
3		05/09/17

WINTERHAVEN PUBLIC SAFETY FACILITY

REVISIONS

NO.	DESCRIPTION	DATE
1	PLAN CHECK	02/03/17
2	PLAN CHECK	03/03/17
3		05/09/17

WINTERHAVEN PUBLIC SAFETY FACILITY

REVISIONS

NO.	DESCRIPTION	DATE
1	PLAN CHECK	02/03/17
2	PLAN CHECK	03/03/17
3		05/09/17

WINTERHAVEN PUBLIC SAFETY FACILITY

REVISIONS

NO.	DESCRIPTION	DATE
1	PLAN CHECK	02/03/17
2	PLAN CHECK	03/03/17
3		05/09/17

WINTERHAVEN PUBLIC SAFETY FACILITY

REVISIONS

NO.	DESCRIPTION	DATE
1	PLAN CHECK	02/03/17
2	PLAN CHECK	03/03/17
3		05/09/17

WINTERHAVEN PUBLIC SAFETY FACILITY

STATE OF CALIFORNIA
INDOOR LIGHTING – LIGHTING CONTROLS
CERTIFICATE OF COMPLIANCE
Indoor Lighting - Lighting Controls
Project Name: WINTERHAVEN PUBLIC SAFETY FACILITY
Date Prepared: 2/23/2016
Page 2 of 3

A separate document must be filled out for Conditioned and Unconditioned Spaces. This page is used only for the following:
 CONDITIONED SPACES UNCONDITIONED SPACES

MANDATORY AND PRESCRIPTIVE INDOOR LIGHTING CONTROL SCHEDULE, PAF CALCULATION, and FIELD INSPECTION CHECKLIST

A	B	C	Standards Complying With 1										K	L	M	N	O		
			D	E	F	G	H	I	J	PAF	Watts of Controlled Lighting	Control Credit (KxL)							
Location in Building	Type/Description of Lighting Control (i.e.: occupancy sensor, automatic time switch, dimmer, automatic daylight, etc.)	# of Units	\$130.1(a)	\$130.1(b)	\$130.1(c)	\$130.1(d)	\$130.1(e)	\$130.1(f)	\$130.1(g)	\$130.1(h)	\$130.1(i)	\$130.1(j)	\$130.1(k)	\$130.1(l)	\$130.1(m)	\$130.1(n)	\$130.1(o)	Pass	Fail
ENTIRE SPACE	Occupancy Sensor	50																	
LOUNGE 125	Dimming w/Occ Sensor																104	0.25	26
OFFICE 115	Dimming w/Occ Sensor																104	0.25	26
OFFICE 131	Dimming w/Occ Sensor																52	0.25	13
OFFICE 132	Dimming w/Occ Sensor																52	0.25	13
COMPUTER 136	Occ Sensor - <= 125 sqft																13	0.40	5
OFFICE 137	Dimming w/Occ Sensor																52	0.25	13
Control Credit PAGE TOTAL (Sum of Column M): 112																			
IF MULTIPLE PAGES ARE USED, ENTER SUM TOTAL OF Control Credit for all pages HERE (Sum of all Column M): 1,704																			
Enter Control Credit total into NRCC-L1-01-E, Page 1.																			

1. \$130.1(a) = Manual area controls; \$130.1(b) = Multi Level; \$130.1(c) = Auto Shut-Off; \$130.1(d) = Mandatory Daylight; \$130.1(e) = Demand Responsive; \$140.6(d) = Additional lighting controls installed to earn a PAF; \$140.6(e) = Prescriptive Secondary Safety Daylight Controls.
2. Check Table 140.6-A for correct Factor. PAFs shall not be traded between conditioned and unconditioned spaces. As a condition to earn a PAF, an Installation Certificate is also required to be filled out, signed, and submitted.

CA Building Energy Efficiency Standards - 2013 Nonresidential Compliance May 2015

STATE OF CALIFORNIA
INDOOR LIGHTING – LIGHTING CONTROLS
CERTIFICATE OF COMPLIANCE
Indoor Lighting - Lighting Controls
Project Name: WINTERHAVEN PUBLIC SAFETY FACILITY
Date Prepared: 2/23/2016
Page 2 of 3

A separate document must be filled out for Conditioned and Unconditioned Spaces. This page is used only for the following:
 CONDITIONED SPACES UNCONDITIONED SPACES

MANDATORY AND PRESCRIPTIVE INDOOR LIGHTING CONTROL SCHEDULE, PAF CALCULATION, and FIELD INSPECTION CHECKLIST

A	B	C	Standards Complying With 1										K	L	M	N	O		
			D	E	F	G	H	I	J	PAF	Watts of Controlled Lighting	Control Credit (KxL)							
Location in Building	Type/Description of Lighting Control (i.e.: occupancy sensor, automatic time switch, dimmer, automatic daylight, etc.)	# of Units	\$130.1(a)	\$130.1(b)	\$130.1(c)	\$130.1(d)	\$130.1(e)	\$130.1(f)	\$130.1(g)	\$130.1(h)	\$130.1(i)	\$130.1(j)	\$130.1(k)	\$130.1(l)	\$130.1(m)	\$130.1(n)	\$130.1(o)	Pass	Fail
OFFICE 141	Dimming w/Occ Sensor																104	0.25	26
OFFICE 142	Dimming w/Occ Sensor																104	0.25	26
OFFICE 143	Dimming w/Occ Sensor																52	0.25	13
OFFICE 144	Dimming w/Occ Sensor																52	0.25	13
STORAGE 106	Occ Sensor - <= 125 sqft																13	0.40	5
RECORDS STORAGE 127	Dimming w/Occ Sensor																25	0.40	10
Control Credit PAGE TOTAL (Sum of Column M): 119																			
IF MULTIPLE PAGES ARE USED, ENTER SUM TOTAL OF Control Credit for all pages HERE (Sum of all Column M): 1,704																			
Enter Control Credit total into NRCC-L1-01-E, Page 1.																			

1. \$130.1(a) = Manual area controls; \$130.1(b) = Multi Level; \$130.1(c) = Auto Shut-Off; \$130.1(d) = Mandatory Daylight; \$130.1(e) = Demand Responsive; \$140.6(d) = Additional lighting controls installed to earn a PAF; \$140.6(e) = Prescriptive Secondary Safety Daylight Controls.
2. Check Table 140.6-A for correct Factor. PAFs shall not be traded between conditioned and unconditioned spaces. As a condition to earn a PAF, an Installation Certificate is also required to be filled out, signed, and submitted.

CA Building Energy Efficiency Standards - 2013 Nonresidential Compliance May 2015

STATE OF CALIFORNIA
INDOOR LIGHTING – LIGHTING CONTROLS
CERTIFICATE OF COMPLIANCE
Indoor Lighting - Lighting Controls
Project Name: WINTERHAVEN PUBLIC SAFETY FACILITY
Date Prepared: 2/23/2016
Page 2 of 3

A separate document must be filled out for Conditioned and Unconditioned Spaces. This page is used only for the following:
 CONDITIONED SPACES UNCONDITIONED SPACES

MANDATORY AND PRESCRIPTIVE INDOOR LIGHTING CONTROL SCHEDULE, PAF CALCULATION, and FIELD INSPECTION CHECKLIST

A	B	C	Standards Complying With 1										K	L	M	N	O		
			D	E	F	G	H	I	J	PAF	Watts of Controlled Lighting	Control Credit (KxL)							
Location in Building	Type/Description of Lighting Control (i.e.: occupancy sensor, automatic time switch, dimmer, automatic daylight, etc.)	# of Units	\$130.1(a)	\$130.1(b)	\$130.1(c)	\$130.1(d)	\$130.1(e)	\$130.1(f)	\$130.1(g)	\$130.1(h)	\$130.1(i)	\$130.1(j)	\$130.1(k)	\$130.1(l)	\$130.1(m)	\$130.1(n)	\$130.1(o)	Pass	Fail
EVIDENCE 134	Occ Sensor - <= 125 sqft																52	0.40	21
ARMORY 133	Occ Sensor - <= 125 sqft																52	0.40	21
LOCKERS 108	Occ Sensor - <= 250 sqft																104	0.30	31
WOMENS LOCKERS 121	Dimming w/Occ Sensor																104	0.25	26
WOMENS LOCKERS 121	Dimming w/Occ Sensor																38	0.25	9
MENS LOCKERS 123	Dimming w/Occ Sensor																104	0.25	26
MENS LOCKERS 123	Dimming w/Occ Sensor																38	0.25	9
Control Credit PAGE TOTAL (Sum of Column M): 144																			
IF MULTIPLE PAGES ARE USED, ENTER SUM TOTAL OF Control Credit for all pages HERE (Sum of all Column M): 1,704																			
Enter Control Credit total into NRCC-L1-01-E, Page 1.																			

1. \$130.1(a) = Manual area controls; \$130.1(b) = Multi Level; \$130.1(c) = Auto Shut-Off; \$130.1(d) = Mandatory Daylight; \$130.1(e) = Demand Responsive; \$140.6(d) = Additional lighting controls installed to earn a PAF; \$140.6(e) = Prescriptive Secondary Safety Daylight Controls.
2. Check Table 140.6-A for correct Factor. PAFs shall not be traded between conditioned and unconditioned spaces. As a condition to earn a PAF, an Installation Certificate is also required to be filled out, signed, and submitted.

CA Building Energy Efficiency Standards - 2013 Nonresidential Compliance May 2015

STATE OF CALIFORNIA
INDOOR LIGHTING – LIGHTING CONTROLS
CERTIFICATE OF COMPLIANCE
Indoor Lighting - Lighting Controls
Project Name: WINTERHAVEN PUBLIC SAFETY FACILITY
Date Prepared: 2/23/2016
Page 2 of 3

A separate document must be filled out for Conditioned and Unconditioned Spaces. This page is used only for the following:
 CONDITIONED SPACES UNCONDITIONED SPACES

MANDATORY AND PRESCRIPTIVE INDOOR LIGHTING CONTROL SCHEDULE, PAF CALCULATION, and FIELD INSPECTION CHECKLIST

A	B	C	Standards Complying With 1										K	L	M	N	O		
			D	E	F	G	H	I	J	PAF	Watts of Controlled Lighting	Control Credit (KxL)							
Location in Building	Type/Description of Lighting Control (i.e.: occupancy sensor, automatic time switch, dimmer, automatic daylight, etc.)	# of Units	\$130.1(a)	\$130.1(b)	\$130.1(c)	\$130.1(d)	\$130.1(e)	\$130.1(f)	\$130.1(g)	\$130.1(h)	\$130.1(i)	\$130.1(j)	\$130.1(k)	\$130.1(l)	\$130.1(m)	\$130.1(n)	\$130.1(o)	Pass	Fail
HALLWAY 105	Dimming w/Occ Sensor																520	0.25	130
HALLWAY 145	Dimming w/Occ Sensor																624	0.25	156
BATHROOM 102	Dimming w/Occ Sensor																13	0.25	3
BATHROOM 107	Occ Sensor - <= 125 sqft																19	0.40	8
BATHROOM 107	Occ Sensor - <= 125 sqft																13	0.40	5
BATHROOM 109	Occ Sensor - <= 125 sqft																19	0.40	8
BATHROOM 109	Occ Sensor - <= 125 sqft																13	0.40	5
Control Credit PAGE TOTAL (Sum of Column M): 314																			
IF MULTIPLE PAGES ARE USED, ENTER SUM TOTAL OF Control Credit for all pages HERE (Sum of all Column M): 1,704																			
Enter Control Credit total into NRCC-L1-01-E, Page 1.																			

1. \$130.1(a) = Manual area controls; \$130.1(b) = Multi Level; \$130.1(c) = Auto Shut-Off; \$130.1(d) = Mandatory Daylight; \$130.1(e) = Demand Responsive; \$140.6(d) = Additional lighting controls installed to earn a PAF; \$140.6(e) = Prescriptive Secondary Safety Daylight Controls.
2. Check Table 140.6-A for correct Factor. PAFs shall not be traded between conditioned and unconditioned spaces. As a condition to earn a PAF, an Installation Certificate is also required to be filled out, signed, and submitted.

CA Building Energy Efficiency Standards - 2013 Nonresidential Compliance May 2015

STATE OF CALIFORNIA
INDOOR LIGHTING – LIGHTING CONTROLS
CERTIFICATE OF COMPLIANCE
Indoor Lighting - Lighting Controls
Project Name: WINTERHAVEN PUBLIC SAFETY FACILITY
Date Prepared: 2/23/2016
Page 2 of 3

A separate document must be filled out for Conditioned and Unconditioned Spaces. This page is used only for the following:
 CONDITIONED SPACES UNCONDITIONED SPACES

MANDATORY AND PRESCRIPTIVE INDOOR LIGHTING CONTROL SCHEDULE, PAF CALCULATION, and FIELD INSPECTION CHECKLIST

A	B	C	Standards Complying With 1										K	L	M	N	O		
			D	E	F	G	H	I	J	PAF	Watts of Controlled Lighting	Control Credit (KxL)							
Location in Building	Type/Description of Lighting Control (i.e.: occupancy sensor, automatic time switch, dimmer, automatic daylight, etc.)	# of Units	\$130.1(a)	\$130.1(b)	\$130.1(c)	\$130.1(d)	\$130.1(e)	\$130.1(f)	\$130.1(g)	\$130.1(h)	\$130.1(i)	\$130.1(j)	\$130.1(k)	\$130.1(l)	\$130.1(m)	\$130.1(n)	\$130.1(o)	Pass	Fail
BATHROOM 124	Occ Sensor - <= 250 sqft																13	0.30	4
BATHROOM 140	Occ Sensor - <= 125 sqft																13	0.40	5
BATHROOM 122	Occ Sensor - <= 125 sqft																13	0.40	5
WASHING STATION 104	Occ Sensor - <= 125 sqft																19	0.40	8
WASHING STATION 104	Occ Sensor - <= 125 sqft																22	0.40	9
RECEPTION 101	Dimming w/Occ Sensor																186	0.25	47
PRE-SCHOOL CLASSROOM	Dimming w/Occ Sensor																186	0.25	47
Control Credit PAGE TOTAL (Sum of Column M): 123																			