

3578 30th Street  
San Diego, CA 92104  
V. 619.236.0595  
F. 619.236.0557  
www.mpa-architects.com

MEMBER  
AMERICAN INSTITUTE OF ARCHITECTS

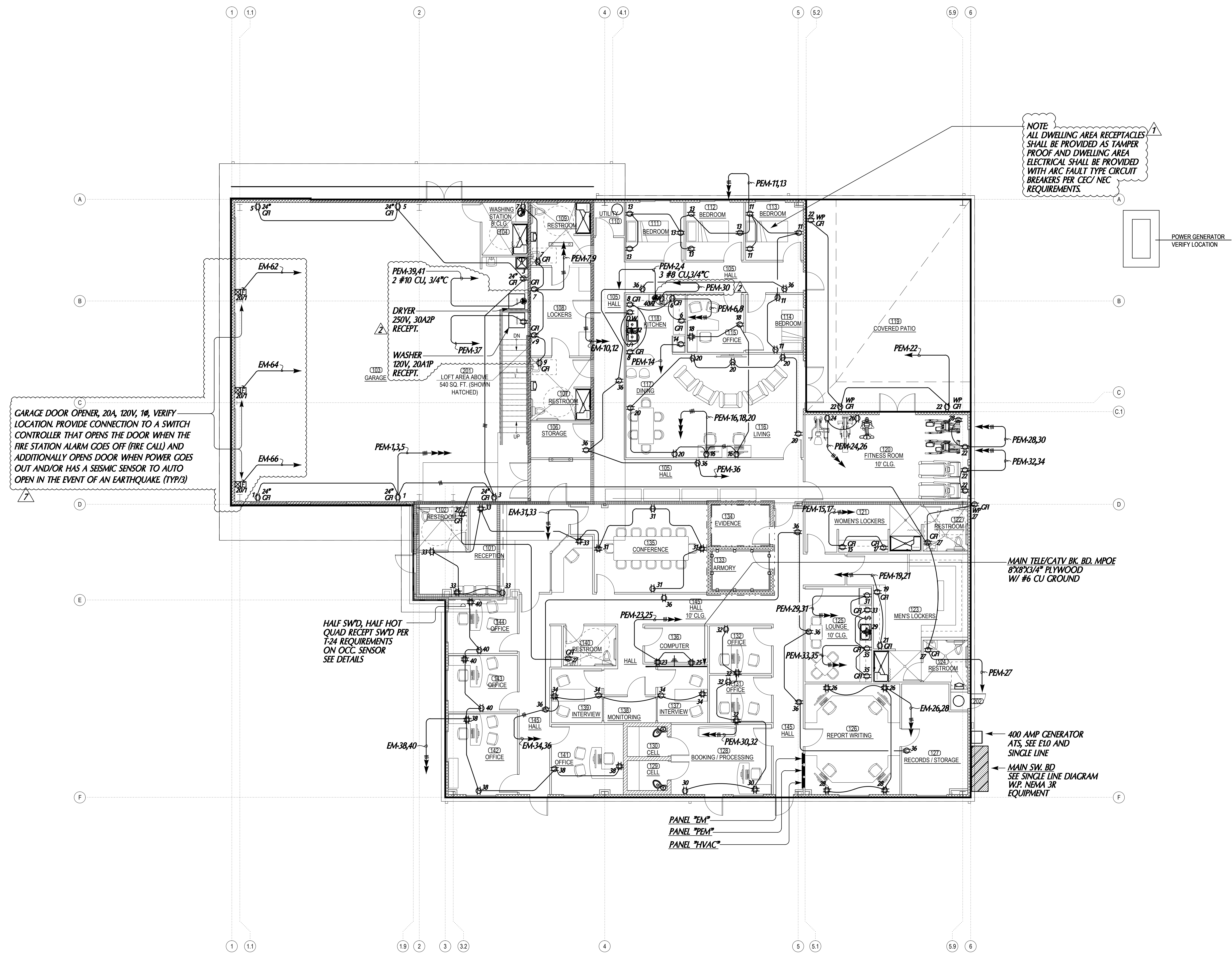
CLIENT

PROJECT

WINTERHAVEN  
PUBLIC SAFETY FACILITY

REVISIONS

NO.	DESCRIPTION	DATE
1	PLAN CHECK	02/03/17
2	PLAN CHECK	03/03/17
3		05/18/17



NOTE:  
ALL DWELLING AREA RECEPTACLES  
SHALL BE PROVIDED AS TAMPER  
PROOF AND DWELLING AREA  
ELECTRICAL SHALL BE PROVIDED  
WITH ARC FAULT TYPE CIRCUIT  
BREAKERS PER CEC/NEC  
REQUIREMENTS.

GARAGE DOOR OPENER, 20A, 120V, 1Ø, VERIFY  
LOCATION. PROVIDE CONNECTION TO A SWITCH  
CONTROLLER THAT OPENS THE DOOR WHEN THE  
FIRE STATION ALARM GOES OFF (FIRE CALL) AND  
ADDITIONALLY OPENS DOOR WHEN POWER GOES  
OUT AND/OR HAS A SEISMIC SENSOR TO AUTO  
OPEN IN THE EVENT OF AN EARTHQUAKE (TYP/3)

HALF SWD, HALF HOT  
QUAD RECEPT SWD PER  
T-24 REQUIREMENTS  
ON OCC. SENSOR  
SEE DETAILS

MAIN TELE/CATV BK. BD. MPOE  
8'X8'X3/4" PLYWOOD  
W/ #6 CU GROUND

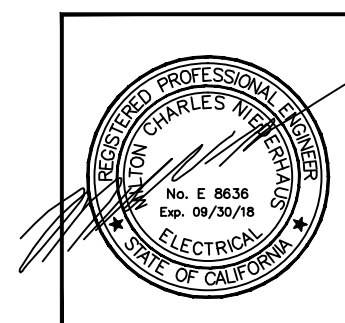
400 AMP GENERATOR  
ATS, SEE E1.0 AND  
SINGLE LINE  
MAIN SW. BD  
SEE SINGLE LINE DIAGRAM  
W/P. NEMA 3R  
EQUIPMENT

PANEL "EM"  
PANEL "PEM"  
PANEL "HVAC"

ELECTRICAL POWER PLAN

1/8"=1'-0"

A



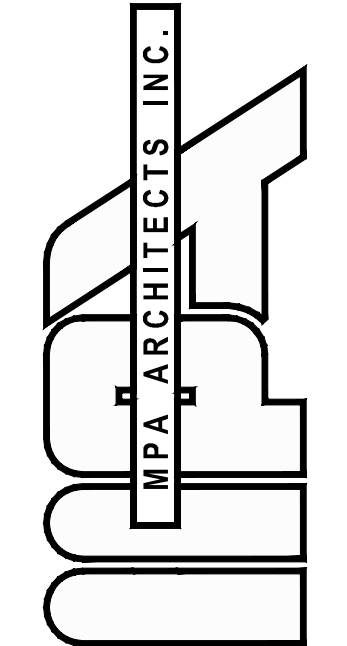
**NEDC, INC.**  
ELECTRICAL DESIGN CONSULTANTS  
AN ENGINEERING CORPORATION  
3103 FALCON STREET, SUITE J  
SAN DIEGO, CALIFORNIA 92103  
(619) 278-0070 FAX (619) 278-0078  
NEDC@CAPBELLNET

SHEET TITLE  
**ELECTRICAL  
POWER PLAN**

DATE	SCALE	TITLE
05-18-17		E3.0

PLOT DATE 05-18-17

Copyright 2015, MPA Architects, Inc. All rights reserved.



3578 30th Street  
San Diego, CA 92104  
V. 619.236.0595  
F. 619.236.0557  
www.mpa-architects.com

MEMBER  
AMERICAN INSTITUTE OF ARCHITECTS

CLIENT

PROJECT

WINTERHAVEN  
PUBLIC SAFETY FACILITY

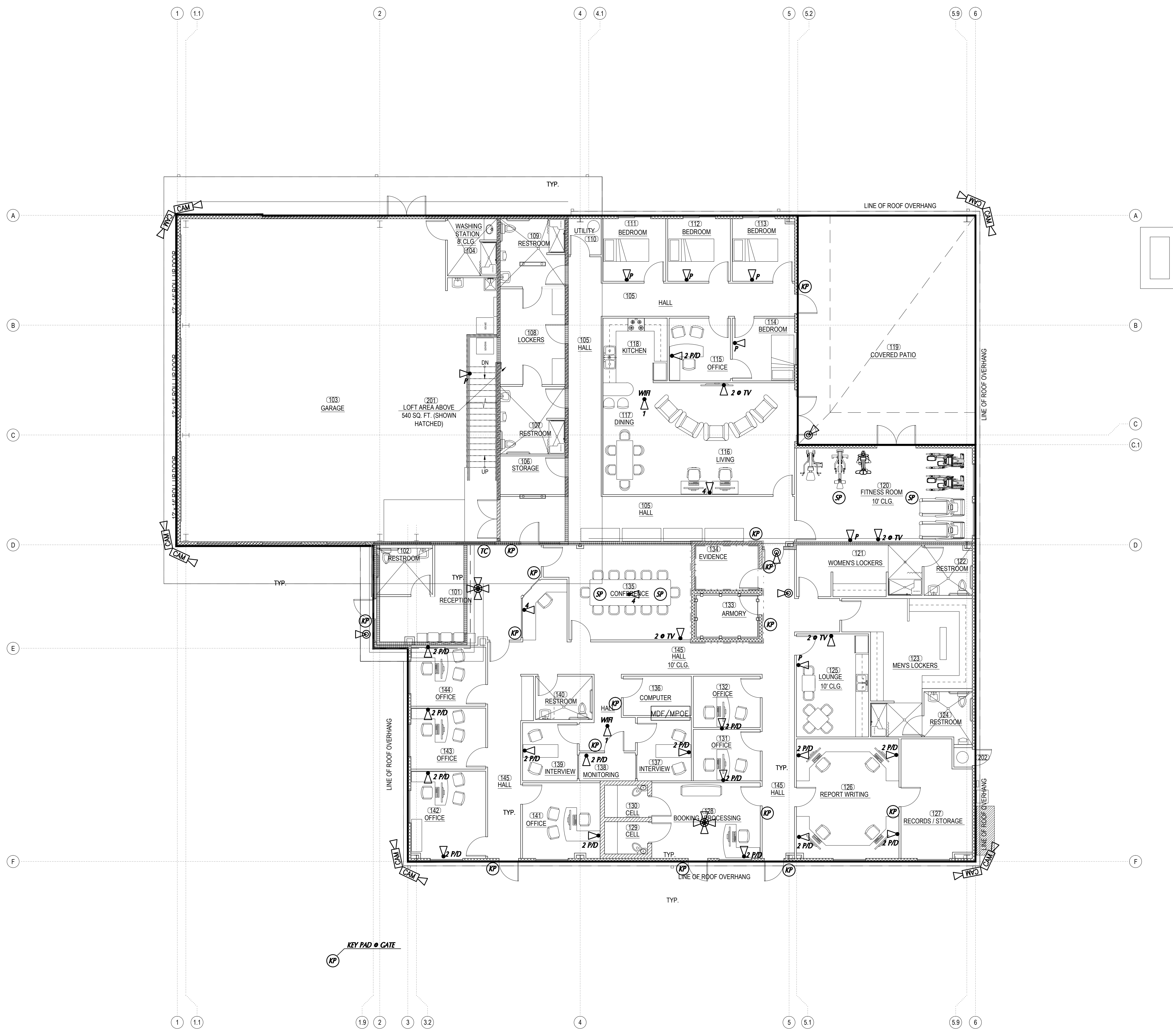
REVISIONS

NO.	DESCRIPTION	DATE
1	PLAN CHECK	02/03/17
2	PLAN CHECK	03/03/17
3		05/18/17

SHEET TITLE

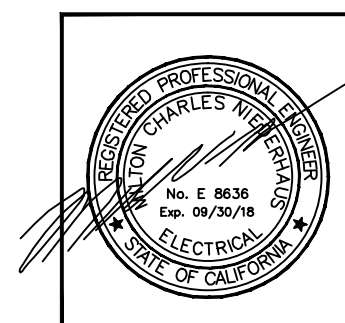
ELECTRICAL LOW VOLTAGE PLAN

DATE	SCALE	TITLE
05-18-17		E4.0



COMMUNICATIONS/ LOW VOLTAGE LEGEND	
WiFi	ONE CAT6 AT EACH WIFI LOCATION **CABLES TO BE LEFT ABOVE CEILING TERMINATED WITH MOD END AND 20' SERVICE LOOP AT LOCATION SHOWN**
X	X= NUMBER OF CAT6 AT EACH LOCATION
2 P/D	TWO CAT6 AT EACH PHONE/ DATA LOCATION
1 T.C.	ONE CAT6 AT EACH TIME CLOCK **HEIGHT TBD/ NEED ELECTRICAL AT LOCATION ALSO**
2 FAX	TWO CAT6 AT EACH FAX MACHINE LOCATION
2 PRINTER	TWO CAT6 AT EACH PRINTER LOCATION
2 @ TV	TWO CAT6 AT EACH PHONE LOCATION **HEIGHT TBD/ NEED ELECTRICAL AT LOCATION ALSO**
P	ONE CAT6 AT EACH PHONE LOCATION **HEIGHT TBD**
CAM	ONE CAT6 AT EACH BULLET CAMERA LOCATION **HEIGHT AND EXACT LOCATION TBD**
⊙	ONE CAT6 AT EACH DOME CAMERA LOCATION **HEIGHT AND EXACT LOCATION TBD**
KP	ONE CAT6 AT EACH KEYPAD LOCATION **HEIGHT TBD**
MDF/MPOE	MDF/MPOE LOCATION
SP	SPEAKER 8" **16/4 WIRE TO BE USED**
TC	ONE CAT6 AT EACH TIME CLOCK LOCATION **HEIGHT TBD/ NEED ELECTRICAL AT LOCATION ALSO**

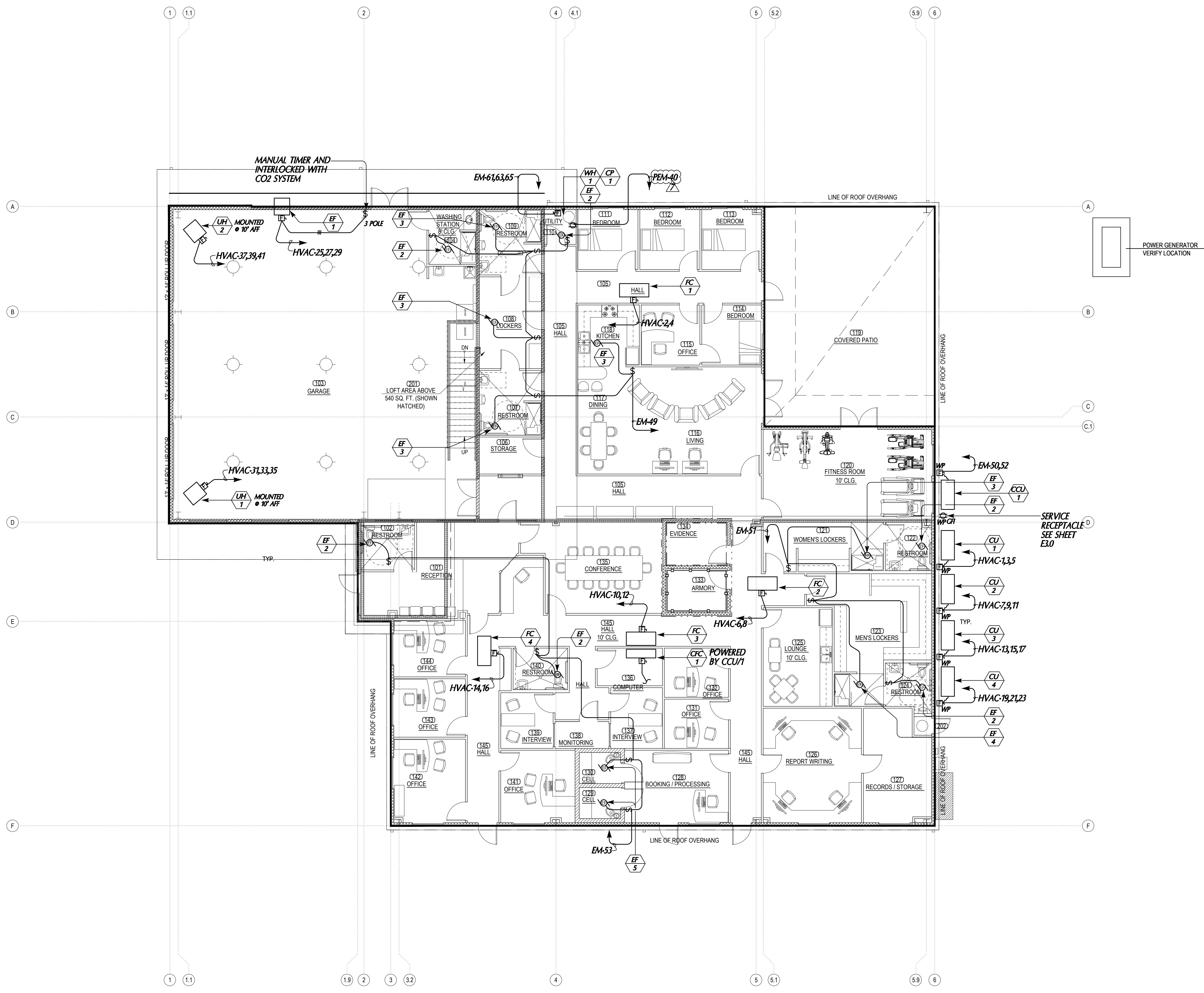
ELECTRICAL LOW VOLTAGE PLAN  
1/8"=1'-0" (A)



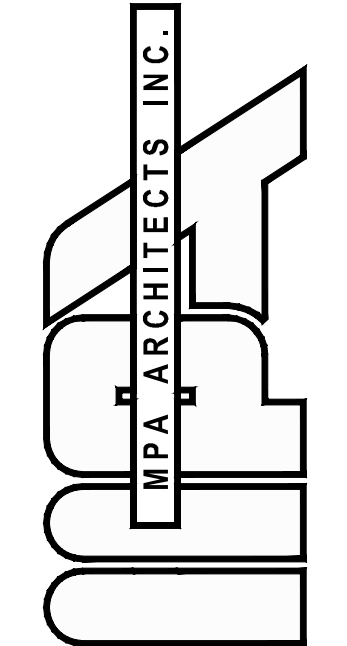
**NEDC, INC.**  
ELECTRICAL DESIGN CONSULTANTS  
AN ENGINEERING CORPORATION  
3103 FALCON STREET, SUITE J  
SAN DIEGO, CALIFORNIA 92103  
(619) 278-0070 FAX (619) 278-0078  
NEDC@FACBELLET

PLOT DATE 05-18-17

Copyright 2015, MPA Architects, Inc. All rights reserved.



ELECTRICAL HVAC PLAN  
1/8"=1'-0" (A)



3578 30th Street  
San Diego, CA 92104  
V. 619.236.0595  
F. 619.236.0557  
www.mpa-architects.com

MEMBER  
AMERICAN INSTITUTE OF ARCHITECTS

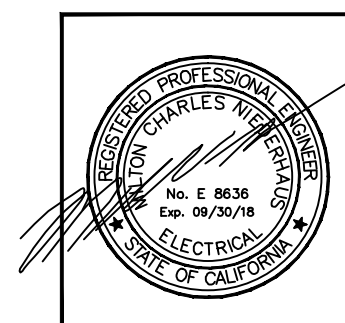
CLIENT

PROJECT

WINTERHAVEN  
PUBLIC SAFETY FACILITY

REVISIONS

NO.	DESCRIPTION	DATE
1	PLAN CHECK	02/03/17
2	PLAN CHECK	03/03/17
7		05/18/17



**NEDC, INC.**  
ELECTRICAL DESIGN CONSULTANTS  
AN ENGINEERING CORPORATION  
3103 FALCON STREET, SUITE J  
SAN DIEGO, CALIFORNIA 92103  
(619) 278-0070 FAX (619) 278-0078  
NEDC@CAPBELLNET

SHEET TITLE

ELECTRICAL MECH  
PLAN

DATE	TITLE	SCALE	TITLE
DATE	TITLE	SCALE	TITLE
CHECKED BY	TITLE	DRAWN BY	TITLE
PROJECT NO.	TITLE		

E5.0

PLOT DATE 05-18-17

Copyright 2015, MPA Architects, Inc. All rights reserved.



### EQUIPMENT SCHEDULE

ITEM	VOLTAGE	PHASE	F.L.A. OR HP	FUSE	WIRE	REMARKS
FC 1	208	1Ø	7.5 MCA	15A 2P	2 #12 CU, 1/2" C	FAN COIL UNIT ABOVE CEILING CONTROLLED W/ THERMOSTAT
FC 2	208	1Ø	7.5 MCA	15A 2P	2 #12 CU, 1/2" C	FAN COIL UNIT ABOVE CEILING CONTROLLED W/ THERMOSTAT
FC 3	208	1Ø	5.1 MCA	15A 2P	2 #12 CU, 1/2" C	FAN COIL UNIT ABOVE CEILING CONTROLLED W/ THERMOSTAT
FC 4	208	1Ø	7.5 MCA	15A 2P	2 #12 CU, 1/2" C	FAN COIL UNIT ABOVE CEILING CONTROLLED W/ THERMOSTAT
CU 1	208	3Ø	21.5 MCA	35A 3P	3 #10 CU, 3/4" C	CONDENSING UNIT ON GRADE
CU 2	208	3Ø	18.6 MCA	30A 3P	3 #10 CU, 3/4" C	CONDENSING UNIT ON GRADE
CU 3	208	3Ø	12.7 MCA	20A 3P	2 #12 CU, 1/2" C	CONDENSING UNIT ON GRADE
CU 4	208	3Ø	18.6 MCA	30A 3P	3 #10 CU, 3/4" C	CONDENSING UNIT ON GRADE
EF 1	208	3Ø	1 HP	15A 3P	3 #12 CU, 1/2" C	WALL MOUNTED EXHAUST FAN W/ MANUAL TIMER & INTERLOCKED WITH CO2 SYSTEM
EF 2	120	1Ø	8.4 W	N/A	2 #12 CU 1/2" C	CEILING MOUNTED EXHAUST FAN CONTROLLED WITH LIGHT SWITCH
EF 3	120	1Ø	128 W	N/A	2 #12 CU 1/2" C	CEILING MOUNTED EXHAUST FAN CONTROLLED WITH LIGHT SWITCH
EF 4	120	1Ø	48.2 W	N/A	2 #12 CU 1/2" C	CEILING MOUNTED EXHAUST FAN CONTROLLED WITH LIGHT SWITCH
EF 5	120	1Ø	0.5 A	N/A	2 #12 CU 1/2" C	CEILING MOUNTED EXHAUST FAN CONTROLLED WITH LIGHT SWITCH
UH 1	208	3Ø	15 KW	60A 3P	3 #6 CU, 1" C	ELECTRIC UNIT HEATER CONTROLLED W/ THERMOSTAT
UH 2	208	3Ø	15 KW	60A 3P	3 #6 CU, 1" C	ELECTRIC UNIT HEATER CONTROLLED W/ THERMOSTAT
CCU 1	208	1Ø	10 MCA	15A 2P	2 #12 CU, 1/2" C	COMPUTER CONDENSING UNIT COOLING ONLY
CFC 1	208	1Ø	POWER BY OUTDOOR UNIT	CCU/1		COMPUTER FAN COIL UNIT CONTROLLED W/ THERMOSTAT
WH 1	208	3Ø	18 KW (50 FLA)	70A 3P	3 #4 CU, 1" C	ELECTRICAL WATER HEATER
CP 1	120	1Ø	40 W	20A1P RECEPT.	2 #12 CU 1/2" C	WATER HEATER CIRC PUMP
GD 1	120	1Ø	3/4 HP (8.1 A)	30A 1P	2 #10 CU 3/4" C	GARBAGE DISPOSAL

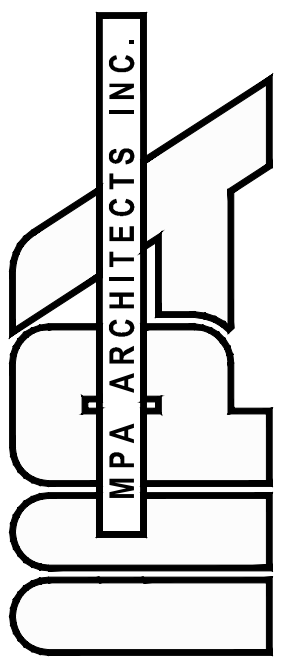
#### ELECTRICAL EQUIP. NOTES

- ALL EXTERIOR EQUIPMENT SHALL BE WEATHERPROOF, NEMA 3R
- ELECTRICAL CONTRACTOR SHALL VERIFY EXACT LOCATION OF ALL EQUIPMENT WITH MECHANICAL DRAWINGS AND CONTRACTOR PRIOR TO ROUGH AND/OR ROOF PENETRATIONS.
- ELECTRICAL CONTRACTOR SHALL PROVIDE ALL DISCONNECTS, STARTERS, PIPE AND WIRE AS REQUIRED FOR A COMPLETE WORKING SYSTEM.
- ELECTRICAL CONTRACTOR SHALL COORDINATE BUILDING SERVING VOLTAGE WITH MECHANICAL CONTRACTOR UNITS FOR CONSTRUCTION

### LUMINAIRE SCHEDULE

TYPE	MTC	LAMP		LUMINAIRE DESCRIPTION	MANUFACTURER & CATALOG NUMBER	INPUT WATTS, VOLTS	REF. NOTES	REF. SYMBOLS
		#	CODE WATT/LUMENS COLOR					
A	REC	1	31W LED 3500K	2X2 RECESSED LED LIGHT FIXTURE WITH CONTOUR LENS	COLUMBIA #LSER22 35LWG-C-EDU	31W 120V	① ②	
B	REC	1	52W LED 3500K	2X4 RECESSED LED LIGHT FIXTURE WITH CONTOUR LENS	COLUMBIA #LSER24 35MLG-C-EDU	52W 120V	① ②	
C	CHAIN HUNG	1	48W LED 3500K	4' SUSPENDED LED STRIP LIGHT CHAIN HUNG	COLUMBIA #LCL4-35ML-EDU/CSHC	48W 120V	① ②	
D	CORNER WALL	1	45W LED 4000K	9"X48" LED WALL MOUNTED VANDAL PROOF LIGHT FIXTURE	KENALL #CC-4-4-45L40K-DCC-DV-1/G-1	45W 120V	① ②	
E	REC	1	18.9W LED 3500K	RECESSED LED CAN LIGHT	PATHWAY #6VL0DWL-15-35K/6VLEDWL-SCLPF	18.9W 120V	① ②	
F	CLG SURF.	1	112W LED 4000K	CEILING MOUNT LED LOWBAY FIXTURE W/TRANSLUCENT WHITE	HUBBELL #LBS-4K-WW16-LO-U-CD-WH-N	112W 120V	① ②	
G	PEND.	1	22W LED 3000K	DECORATIVE PENDANT FOR KITCHEN/ DINING W/ GLASS LENS AND LED LAMP	TECH #700TDSTNP-S-C-Y-LED30	22W 120V	① ②	
H	CLG SURF.	1	12.5W LED 3500K	ROUND DRUM LED CLG SURFACE RESTROOM FIXTURE W/ WHITE ACRYLIC LENS	TERON #EE-L12.5-120V-35K	12.5W 120V	① ②	
I	CLG SURF.	1	12.5W LED 2700K	CEILING MOUNT 3-SPEED REVERSABLE PADDLE FAN W/ LED LIGHT KIT	SPEC BY ARCHITECT \$500.00 ALLOWANCE	12.5W 120V	① ②	
EX	SURF.	1	LED	UNIVERSAL MTD EXIT SIGN W/ 90 MIN BATTERY PACK	DUAL-LITE #EVE-U-R-W	2W 120V	②	
SA	POLE	1	135W LED 5000K	POLE MOUNT LED SITE LIGHT ON 25' POLE LED HEAD WITH INTERNAL PHOTO-CELL	BEACON #VP-L-64NB-135-5K-T4-UNV-RA-BZT-PCR-TL	135W 120V	① ②	
SB	WALL	1	29W LED 5000K	EXTERIOR LED WALL PACK MTD @ 12'-0" AFF WITH INTERNAL PHOTOCELL	HUBBELL #LNC2-12LV-5K-3-1-PC	29W 120V	① ②	
SC	WALL	1	20W LED 5000K	EXTERIOR PATIO WALL LIGHT @ 8' AFF W/ INTERNAL PHOTOCELL	INDESA #hrled	20W 120V	① ②	

- PROVIDE WITH LED DRIVER
- LIGHT ON STANDBY EMERGENCY GENERATOR CIRCUIT.



3578 30th Street  
San Diego, CA 92104  
V. 619.236.0595  
F. 619.236.0557

www.mpa-architects.com  
MEMBER  
AMERICAN INSTITUTE OF ARCHITECTS

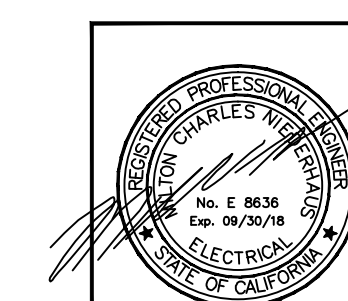
CLIENT

PROJECT

WINTERHAVEN  
PUBLIC SAFETY FACILITY

REVISIONS

NO.	DESCRIPTION	DATE
1	PLAN CHECK	02/03/17
2	PLAN CHECK	03/03/17
3		05/18/17



**NEDC, INC.**

ELECTRICAL DESIGN CONSULTANTS  
AN ENGINEERING CORPORATION

3103 FALCON STREET, SUITE J  
SAN DIEGO, CALIFORNIA 92103  
(619) 278-0070 FAX (619) 278-0078  
NEDC@NEDC.COM

SHEET TITLE

ELECTRICAL  
SCHEDULES

DATE	TITLE	SCALE	TITLE
DATE	TITLE	SCALE	TITLE
DATE	TITLE	SCALE	TITLE
DATE	TITLE	SCALE	TITLE

E6.0

PLOT DATE 05-18-17

Copyright 2015, MPA Architects, Inc. All rights reserved.