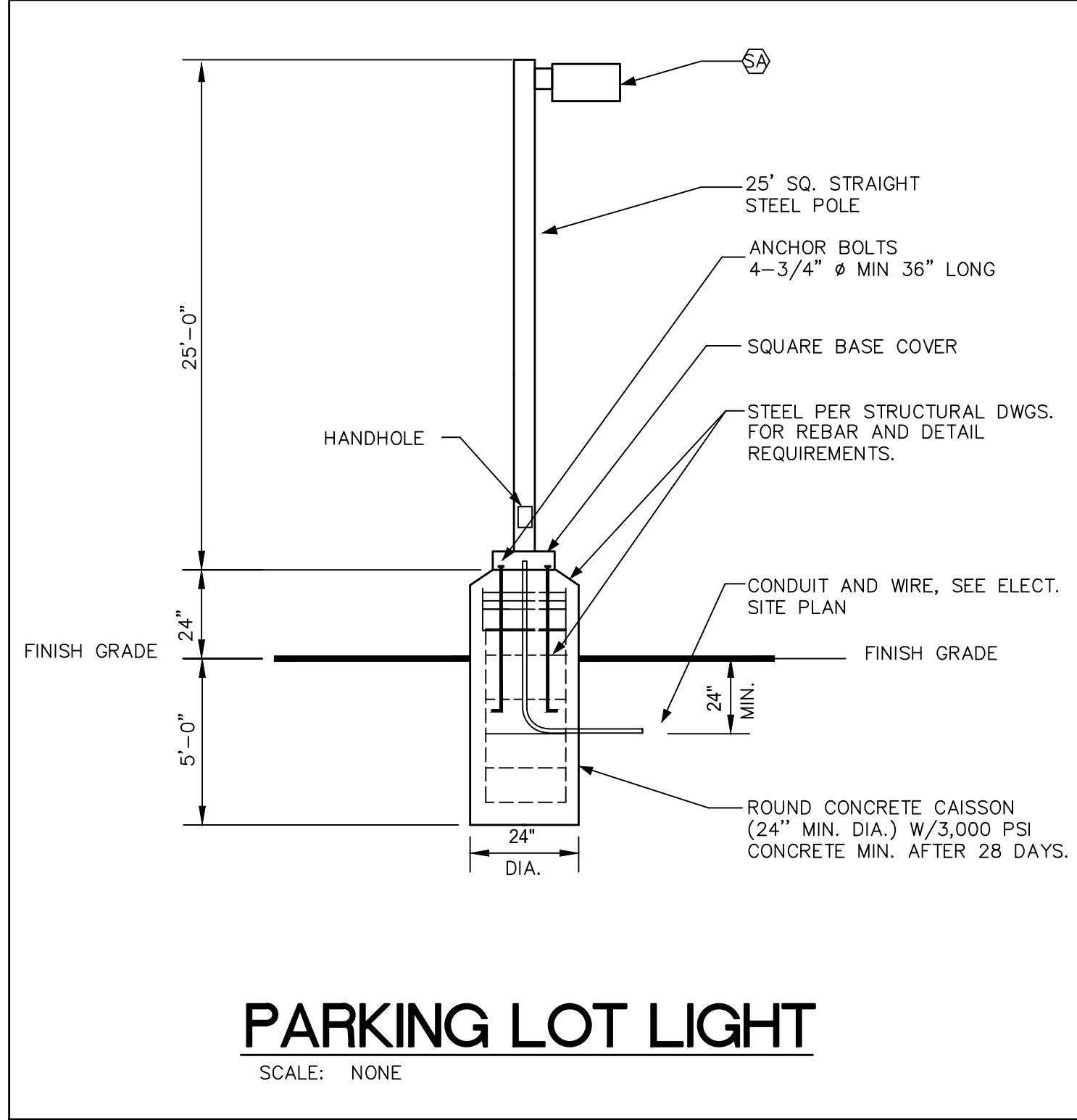


NOTE
 1) ALL SITE CONDUIT MIN 24" UNDERGROUND
 2) ALL EMPTY CONDUIT TO BE PROVIDED WITH PULL ROPE

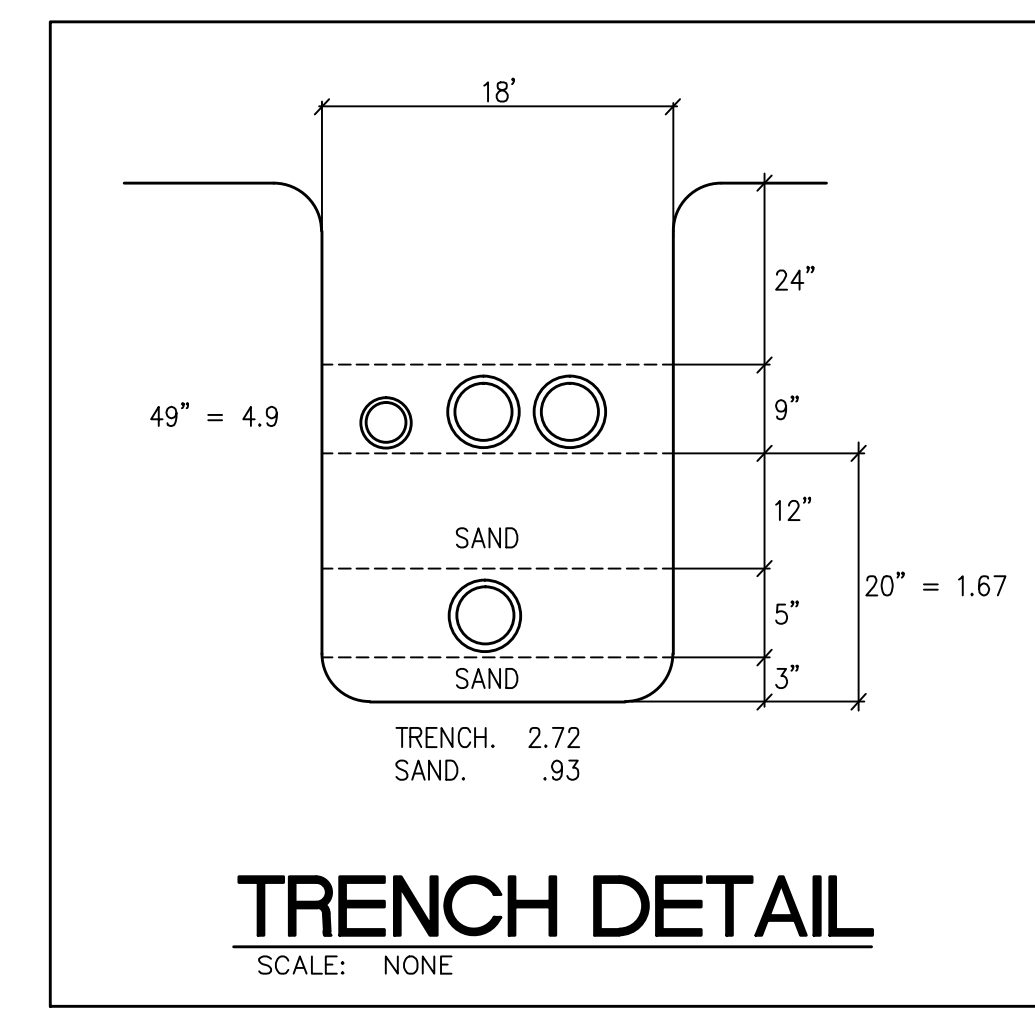
WARNING
 1 ELECTRICAL CONTRACTOR SHALL HAVE ALL EXISTING UTILITIES PRE-LOCATED PRIOR TO ANY AND ALL EXCAVATION (OF ANY TRADE).
 2 THE ELECTRICAL CONTRACTOR SHALL EXERCISE EXTREME CAUTION IN THE AREA SO AS NOT TO DISTURB OR DAMAGE ANY EXISTING UTILITIES AND/OR ELECTRICAL LINES THAT MAY BE UNDERGROUND AND SHALL BE RESPONSIBLE THEREFORE SHOULD ANY DAMAGE OR HARM OCCUR TO PERSON(S) OR EQUIPMENT.

POWER CO. COORDINATION STATEMENT
 THIS CONTRACTOR SHALL SUBMIT ELECTRICAL DRAWINGS IMMEDIATELY AFTER THE AWARD OF CONTRACT TO THE LOCAL UTILITY COMPANY FOR THEIR REVIEW. IF THERE ARE ANY UTILITY CHARGES, THEY SHALL BE PAID BY THE OWNER BUT THIS CONTRACTOR SHALL PROVIDE ALL REQUIRED COORDINATION BETWEEN THE OWNER AND THE UTILITY COMPANY AND THIS SHALL BE ACCOMPLISHED IN AN IMMEDIATE MANNER ONCE THE PROJECT IS AWARDED TO THE CONTRACTOR. COORDINATE ALL UTILITY CHANGES THAT ARE TO TAKE PLACE ON THIS JOB WITH RESPECT TO THE ELECTRICAL WORK THAT IS GOING TO BE PERFORMED.

TELEPHONE/ CATV COMPANY COORDINATION STATEMENT
 THIS CONTRACTOR SHALL SUBMIT ELECTRICAL DRAWINGS IMMEDIATELY AFTER THE AWARD OF CONTRACT TO THE LOCAL TELEPHONE COMPANY FOR THEIR REVIEW. IF THERE ARE ANY TELEPHONE CHARGES, THEY SHALL BE PAID BY THE OWNER BUT THIS CONTRACTOR SHALL PROVIDE ALL REQUIRED COORDINATION BETWEEN THE OWNER AND THE TELEPHONE COMPANY AND THIS SHALL BE ACCOMPLISHED IN AN IMMEDIATE MANNER ONCE THE PROJECT IS AWARDED TO THE CONTRACTOR. COORDINATE ALL TELEPHONE CHANGES THAT ARE TO TAKE PLACE ON THIS JOB WITH RESPECT TO THE ELECTRICAL WORK THAT IS GOING TO BE PERFORMED.



PARKING LOT LIGHT
 SCALE: NONE



TRENCH DETAIL
 SCALE: NONE

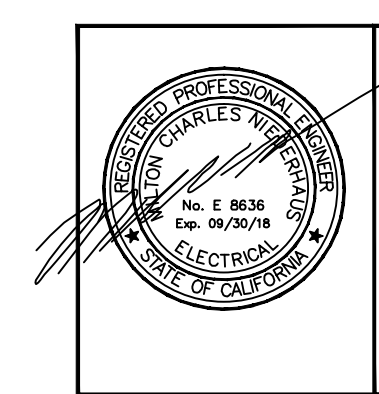
ELECTRICAL SITE PLAN
 Scale: 1" = 10' - 0"

CLIENT
 PROJECT

**WINTERHAVEN
 PUBLIC SAFETY FACILITY**

REVISIONS

NO.	DESCRIPTION	DATE
1	PLAN CHECK	02/23/17
2	PLAN CHECK	03/25/17
7		06/01/17



NEDC, INC.
 ELECTRICAL DESIGN CONSULTANTS
 AN ENGINEERING CORPORATION
 3103 FALCON STREET, SUITE J
 SAN DIEGO, CALIFORNIA 92103
 (619) 278-0076/FAX (619) 278-0078
 NEDC@PACBELLET

SHEET TITLE
ELECTRICAL SITE PLAN

DATE	SCALE
DRAWN BY	CHECKED BY
CREATED BY	SHEET NUMBER
PROJECT NO.	E1.0

PLOT DATE 05-18-17



3578 30th Street
San Diego, CA 92104
V. 619.236.0595
F. 619.236.0557

www.mpa-architects.com
MEMBER
AMERICAN INSTITUTE OF ARCHITECTS

CLIENT

PROJECT

WINTERHAVEN
PUBLIC SAFETY FACILITY

REVISIONS

NO.	DESCRIPTION	DATE
1	PLAN CHECK	02/23/17
2	PLAN CHECK	03/25/17
7		06/16/17

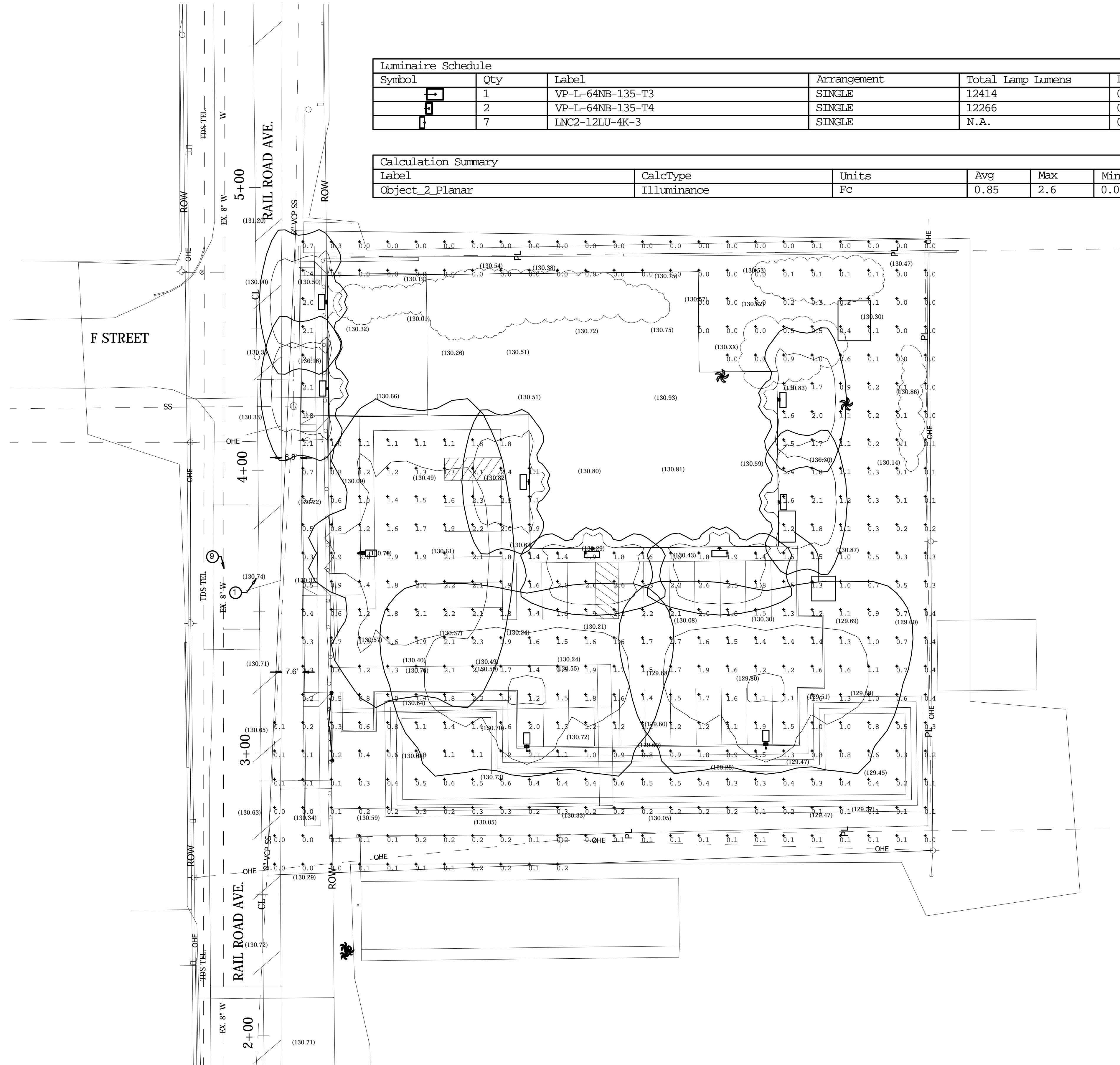
SHEET TITLE

ELECTRICAL SITE
PHOTOMETRIC PLAN

DATE: _____ SCALE: _____
DRAWN BY: _____ DATE: _____
CHECKED BY: _____ SHEET NUMBER: _____
PROJECT NO: _____ **E1.P**

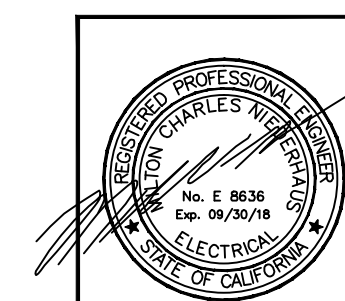
Luminaire Schedule					
Symbol	Qty	Label	Arrangement	Total Lamp Lumens	L
1	1	VP-L-64NB-135-T3	SINGLE	12414	0
2	2	VP-L-64NB-135-T4	SINGLE	12266	0
3	7	LNC2-12LU-4K-3	SINGLE	N.A.	0

Calculation Summary					
Label	CalcType	Units	Avg	Max	Min
Object_2_Planar	Illuminance	Fc	0.85	2.6	0.0



ELECTRICAL PHOTOMETRIC SITE PLAN

Scale: 1" = 10' - 0"



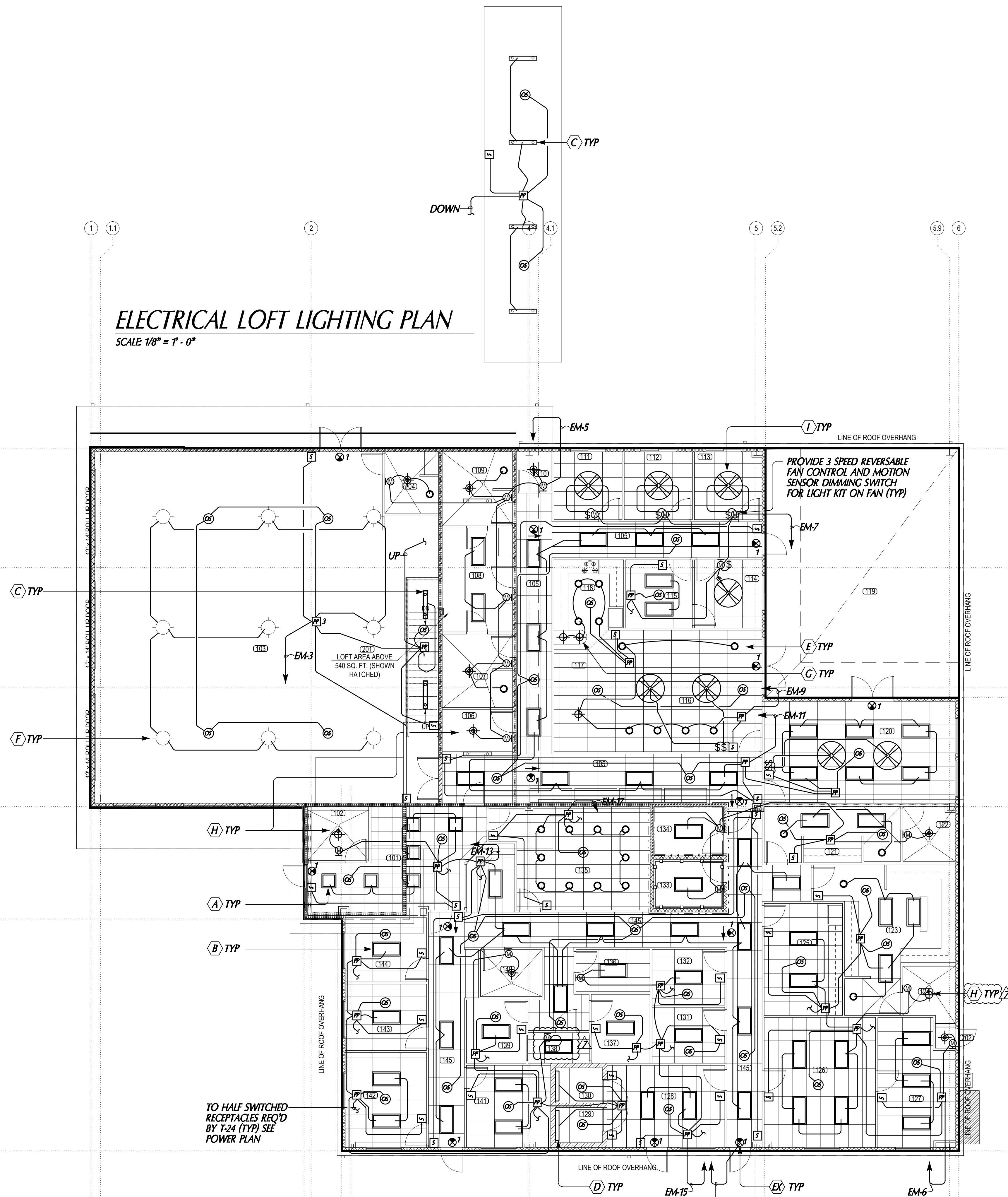
NEDC
NEDC, INC.
ELECTRICAL DESIGN CONSULTANTS
AN ENGINEERING CORPORATION

3103 FALCON STREET, SUITE J
SAN DIEGO, CALIFORNIA 92103
(619) 278-0076 FAX (619) 278-0078
NEDINC@CABELLNET

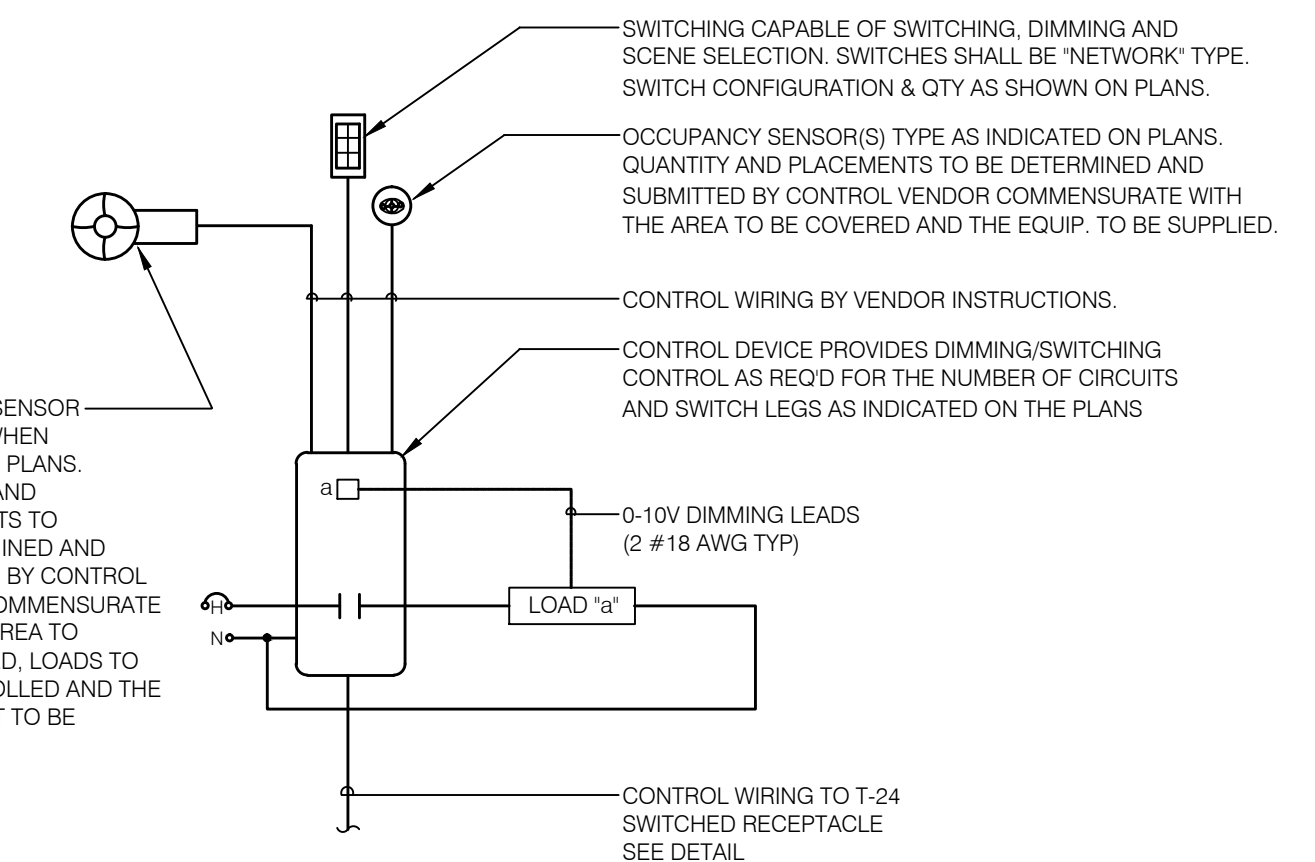
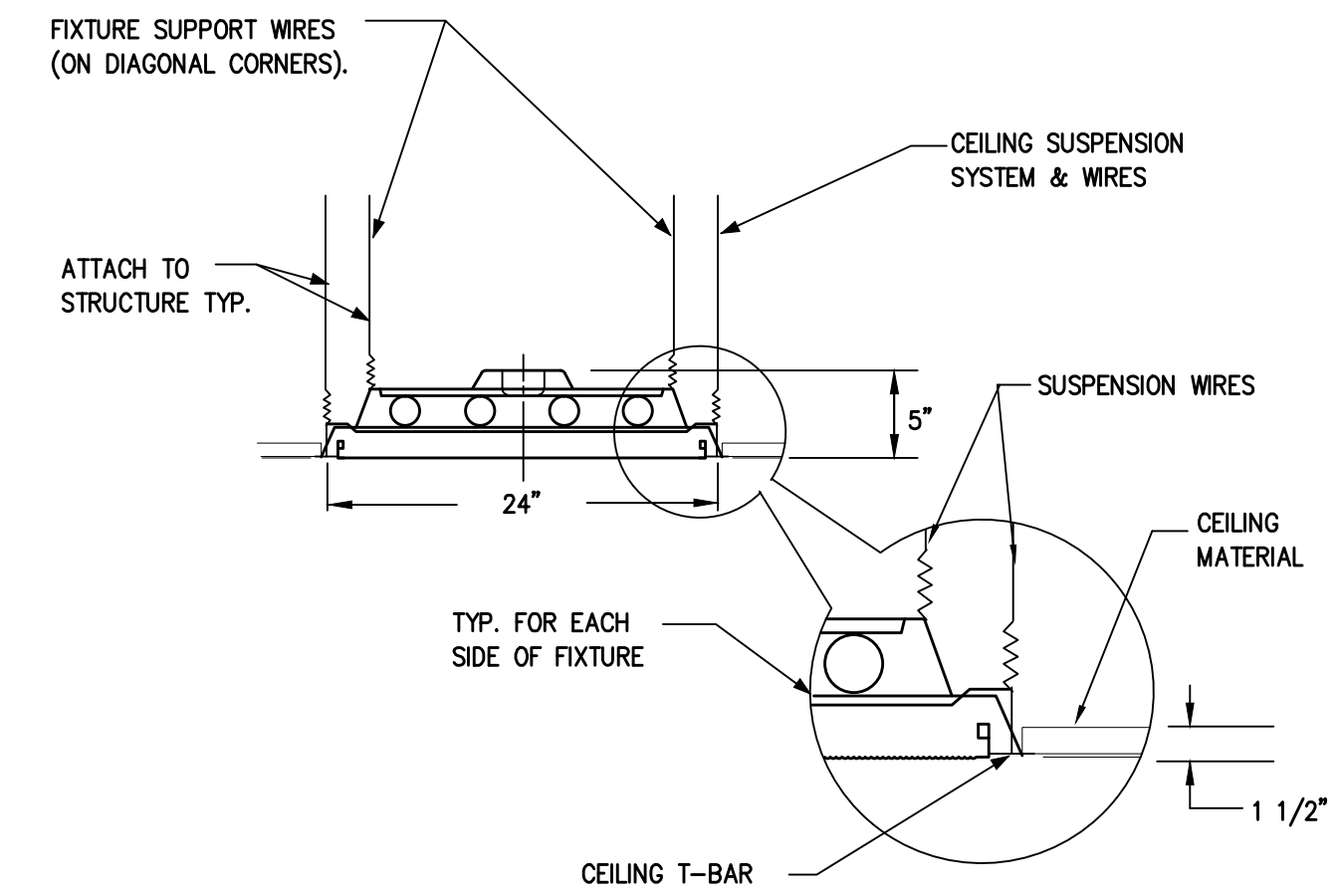
PLOT DATE 05-18-17

ELECTRICAL LOFT LIGHTING PLAN

SCALE 1/8" = 1' - 0"



LIGHTING FIXTURE MOUNTING DETAIL



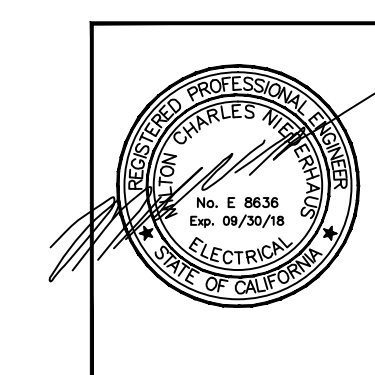
T-24 LIGHTING CONTROL APPLICATION DETAIL
NOT TO SCALE

T-24 CONTROL LEGEND

[S]	NETWORK TYPE SWITCHING CONTROL CAPABLE OF SWITCHING, DIMMING AND SCENE SELECTION
[OS]	OCCUPANCY SENSOR
[M]	WALL MTD OCCUPANCY SENSOR WITH SWITCH PER T-24
[DS]	DAYLIGHT SENSOR
[PP]	CONTROL DEVICE PROVIDES DIMMING/SWITCHING CONTROL AS REQ'D FOR THE NUMBER OF CIRCUITS AND SWITCH LEGS AS INDICATED ON THE PLANS
[Q]	QUADPLEX RECEPTACLE WITH 1/2 SW'D PER CONTROL DIAGRAM OCC SENSOR AND 1/2 HOT.

ELECTRICAL 1ST FLR LIGHTING PLAN

SCALE 1/8" = 1' - 0"



NEDC, INC.
ELECTRICAL DESIGN CONSULTANTS
AN ENGINEERING CORPORATION

3103 FALCON STREET, SUITE J
SAN DIEGO, CALIFORNIA 92103
(619) 278-0070 FAX (619) 278-0078
NEDC@CAPBELLNET

MPA ARCHITECTS INC.

3578 30th Street
San Diego, CA 92104
V. 619.236.0595
F. 619.236.0557
www.mpa-architects.com

MEMBER
AMERICAN INSTITUTE OF ARCHITECTS

CLIENT

PROJECT

WINTERHAVEN
PUBLIC SAFETY FACILITY

TITLE

NO.	DESCRIPTION	DATE
1	PLAN CHECK	02/03/17
2	PLAN CHECK	03/03/17
3		05/18/17

DATE	SCALE	TITLE

SHEET TITLE
ELECTRICAL LIGHTING PLAN

DATE: _____ SCALE: _____ TITLE: _____

DRAWN BY: _____ DATE: _____

CHECKED BY: _____ SHEET NUMBER: _____

PROJECT NO: _____

E2.0

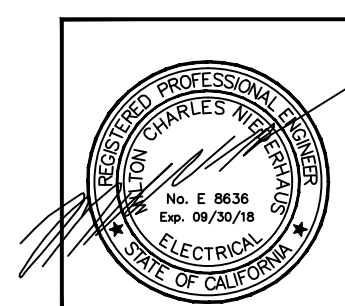
PLOT DATE 05-18-17

Copyright 2017, MPA Architects, Inc. All rights reserved.

Luminaire Schedule						
Symbol	Qty	Label	Arrangement	Total Lamp Lumens	LLF	Description
⊖	6	Type A	SINGLE	N.A.	0.900	LSE22-40LWG-C-ESD
⊕	60	Type B	SINGLE	N.A.	0.900	LSE24-40MLG-C-ESD
⊕	8	Type B1	SINGLE	N.A.	0.900	RMCD-4-TG-11-45L40K-DCC-DV-YB
⊖	2	Type D	SINGLE	N.A.	0.900	CC-4-11-1-45L40K-DCC-1-DV-YB-
⊙	27	Type E	SINGLE	N.A.	0.450	1403240902-001-4, MOD_ 6VLOD2027K_1500 Lumen
⊙	9	Type F	SINGLE	N.A.	0.900	LBS-240LU-4K-WW16
⊕	6	Type G1	SINGLE	N.A.	0.900	Eagle-EE-L12_5-120V-30K



ELECTRICAL 1ST FLR PHOTOMETRIC PLAN
SCALE 1/8" = 1' - 0"



NEDC
NEDC, INC.
ELECTRICAL DESIGN CONSULTANTS
AN ENGINEERING CORPORATION
3103 FALCON STREET, SUITE J
SAN DIEGO, CALIFORNIA 92103
(619) 278-0070 FAX (619) 278-0078
NEDC@FACBELLET

PLOT DATE 05-18-17

SHEET TITLE	
ELECTRICAL PHOTOMETRIC PLAN	
DATE	TITLE
DRAWN BY	DRAWN BY
CHECKED BY	CHECKED BY
PROJECT NO.	SHEET NUMBER
	E2.P

MPA ARCHITECTS INC.
3578 30th Street
San Diego, CA 92104
V. 619.236.0595
F. 619.236.0557
www.mpa-architects.com
MEMBER
AMERICAN INSTITUTE OF ARCHITECTS

CLIENT

PROJECT

**WINTERHAVEN
PUBLIC SAFETY FACILITY**

REVISIONS		
NO.	DESCRIPTION	DATE
1	PLAN CHECK	02/03/17
2	PLAN CHECK	03/03/17
3		05/18/17

Copyright 2015, MPA Architects, Inc. All rights reserved.