

**1 CLOTHESWASHER DETAIL**  
NO SCALE

**REGULATORY NOTES**

REGULATORY NOTES

CODE ANALYSIS  
THE CONSTRUCTION OF THIS PROJECT SHALL CONFORM TO THE REQUIREMENTS OF:

A. 2013 CALIFORNIA BUILDING CODE, BASED ON 2012 IBC  
 B. 2013 CALIFORNIA FIRE CODE, BASED ON 2012 IFC  
 C. 2013 CALIFORNIA PLUMBING CODE, BASED ON 2012 UPC  
 D. 2013 CALIFORNIA MECHANICAL CODE, BASED ON 2012 UMC  
 E. 2013 CALIFORNIA ELECTRICAL CODE, BASED ON 2011 NEC  
 F. 2013 CALIFORNIA ENERGY STANDARDS  
 G. 2013 CALIFORNIA GREEN STANDARDS BUILDING CODE

SEISMIC RESTRAINTS

PIPING

A. SEISMIC BRACING AND ANCHORAGE OF PLUMBING PIPING SHALL BE IN ACCORDANCE WITH THE "GUIDELINES FOR SEISMIC RESTRAINTS OF MECHANICAL SYSTEMS AND PLUMBING PIPING SYSTEMS," PUBLISHED BY SMACNA.

MANDATORY CONSERVATION MEASURES

WATER

A. WATER CLOSETS SHALL BE WATER CONSERVING 128 GALLONS PER FLUSH TYPE.

B. LAVATORY, SINK FITTINGS AND SHOWER ASSEMBLIES SHALL BE LISTED AS "APPROVED" BY THE CALIFORNIA ENERGY COMMISSION.

1. AERATOR AND SHOWER HEADS SHALL INCLUDE INTEGRAL FLOW RESTRICTING DEVICES TO LIMIT FLOW AS FOLLOWS:  
 A) FAUCET AERATOR - 1.5 GPM MAXIMUM  
 B) SHOWER HEADS - 2.0 GPM MAXIMUM

D. URINALS SHALL BE 0.5 GALLON PER FLUSH OR LESS

ENERGY

A. DOMESTIC HOT WATER PIPING INSULATION SHALL BE LISTED AS "APPROVED" BY THE CALIFORNIA ENERGY COMMISSION.

B. DOMESTIC HOT WATER PIPING SHALL BE INSULATED CONSISTENT WITH THE REQUIREMENTS OF THE CALIFORNIA ENERGY COMMISSION ENERGY EFFICIENCY STANDARDS SECTIONS 118 AND 123.

MANDATORY ACCESSIBILITY MEASURES

FIXTURES

A. ACCESSIBLE PLUMBING FIXTURES SHALL BE INSTALLED IN STRICT ACCORDANCE WITH THE 2013 CALIFORNIA BUILDING CODE.

FITTINGS AND TRIM

A. EXPOSED P-TRAP ASSEMBLY AND HOT & COLD WATER SUPPLIES SHALL INCLUDE PRE-MANUFACTURED INSULATION KIT.

B. THE FORCE REQUIRED TO OPERATE LAVATORY OR SINK FAUCETS SHALL BE NO GREATER THAN 5 LBS. SELF CLOSING FAUCETS SHALL HAVE MINIMUM 10 SECOND CYCLE TIME.

CROSS CONNECTION CONTROL MEASURES

PLUMBING SPECIALTIES

A. HOSE BIBBS SHALL BE EQUIPPED WITH INTEGRAL VACUUM BREAKERS.

FIRE RESISTIVE BUILDING MATERIALS

PIPING INSULATION

ALL INSULATING MATERIAL SHALL BE INSTALLED IN COMPLIANCE WITH THE FLAME SPREAD RATING AND SMOKE DENSITY REQUIREMENTS OF SECTION 120.7 OF 2013 CALIFORNIA BUILDING CODE.

INSULATION, INSULATION JACKET, ADHESIVES, TAPES, ETC. SHALL BE APPLIED PER MANUFACTURERS WRITTEN INSTALLATION INSTRUCTIONS

**PROJECT NOTES**

GENERAL

A. VERIFY ALL DIMENSIONS, ELEVATIONS AND SITE CONDITIONS PRIOR TO THE COMMENCEMENT OF ANY WORK. IN THE EVENT OF ANY DISCREPANCIES THE STATE'S REPRESENTATIVE SHALL BE IMMEDIATELY NOTIFIED IN WRITING.

B. ALL OMISSIONS AND OR CONFLICTS BETWEEN THE VARIOUS ELEMENTS OF THE CONSTRUCTION DOCUMENTS SHALL BE BROUGHT TO THE ATTENTION OF AND RESOLVED WITH THE STATE'S REPRESENTATIVE PRIOR TO PROCEEDING WITH ANY OF THE AFFECTED WORK.

C. ALL MATERIALS AND WORKMANSHIP SHALL CONFORM TO THE REQUIREMENTS OF CBC AND CFC.

D. THE PLUMBING CONSTRUCTION DOCUMENTS REPRESENT THE PLUMBING AND PIPING SYSTEMS, NOT THE METHOD OF CONSTRUCTION. THE CONTRACTOR SHALL BE RESPONSIBLE FOR ALL LABOR, MATERIALS, EQUIPMENT AND ACCESSORIES NECESSARY TO ACHIEVE THE FINISHED SYSTEMS.

**GENERAL NOTES**

1. WATER HAMMER ARRESTERS SHALL BE PROVIDED AT QUICK CLOSING FIXTURES PER CFC 609.10.

2. STOP VALVES SHALL BE PROVIDED AT ALL FIXTURES TO ENABLE REGULATION OF FLOW AND SHUT DOWN OF SUPPLY TO FIXTURES PER CFC 606.0

3. PENETRATIONS OF PIPES, CONDUITS, ETC IN WALLS, FLOORS OR CEILING ASSEMBLIES REQUIRING PROTECTED OPENINGS SHALL BE A TESTED ASSEMBLY PER CFC 312.1

4. MOUNTING HEIGHTS FOR HANDICAPPED FIXTURES TO COMPLY WITH ADA REQUIREMENTS PER ARCHITECTURAL DRAWINGS.

5. A TRAP PRIMER VALVE SHALL BE USED WITH ALL FLOOR DRAINS IN ORDER TO MAINTAIN THE TRAP SEAL PER CFC 1007.1

6. SHOWERS AND TUB SHOWER COMBINATIONS SHALL BE PROVIDED WITH INDIVIDUAL CONTROL VALVES OF THE PRESSURE BALANCING OR THE THERMOSTATIC MIXING VALVE TYPE. HANDLE POSITION STOPS SHALL BE ADJUSTED TO DELIVER A MAXIMUM MIXED WATER SETTING OF 120 F PER CFC 408.3

**FIRE PROTECTION**

1. THE AUTOMATIC FIRE PROTECTION SYSTEM SHALL CONFORM TO THE REQUIREMENTS OF NFPA 13 (2013). FIRE SPRINKLER PIPING WORK AND/OR ALTERATIONS SHALL BE PERFORMED BY A LICENSED FIRE SPRINKLER CONTRACTOR.

2. FIRE SPRINKLER CONTRACTOR TO COORDINATE PLACEMENT OF SPRINKLERS WITH ELECTRICAL CONTRACTOR TO AVOID CONFLICT WITH CEILING FANS WHERE THEY OCCUR.

3. THE FIRE WATER SYSTEM TO BE REVIEWED BY THE FIRE DEPARTMENT AND THE CITY ENGINEER.

**LEGEND**

SYMBOLS	ABBREV	DESCRIPTION
— S OR W	S OR W	SANITARY OR WASTE ABOVE FLOOR
— S OR W	S OR W	SANITARY OR WASTE BELOW FLOOR
— OW	OW	OIL WASTE
— GW	GW	GREASE WASTE
⊖	FCO	FLOOR CLEANOUT
⊙	FOC	POINT OF CONNECTION
⊕	FD	FLOOR DRAIN
---	VT	SANITARY VENT
---	C.W.	COLD WATER
---	H.W.	HOT WATER
---	H.W.R.	HOT WATER RETURN
⊗	S.O.V.	SHUT OFF VALVE/ISOLATION (BALL TYPE)
○		PIPE-UP
⊖		PIPE-DOWN
⊕	H.B.	HOSE-BIBB
— TP	TP	TRAP PRIMER
— SD	SD	STORM DRAIN
□		LFG EARTHQUAKE VALVE
	ABV.	ABOVE
	BEL.	BELOW
	CONT.	CONTINUATION
	FLR.	FLOOR
	GR.	GRADE
	TYP.	TYPICAL
	V.T.R.	VENT THROUGH ROOF
	FS	FLOOR SINK

**PIPE MATERIALS**

A. ABOVE GRADE - SANITARY WASTE AND VENT: NO-HUB CAST IRON SOIL PIPE AND FITTINGS ASTM C564 AND IAPMO LISTED STAINLESS STEEL/NEOPRENE GASKET COUPLING.

BELOW GRADE - SANITARY WASTE AND VENT: PVC SCH 40 DWV SOLID WALL PIPE CELL CLASS 12454 ASTM D1784 & ASTM D1785 AND FITTINGS ASTM D2665, SOLVENT CEMENT ASTM D2564, PRIMER ASTM F656, CAST IRON TO PLASTIC PIPE SHALL BE MADE VIA FERNCO COUPLINGS

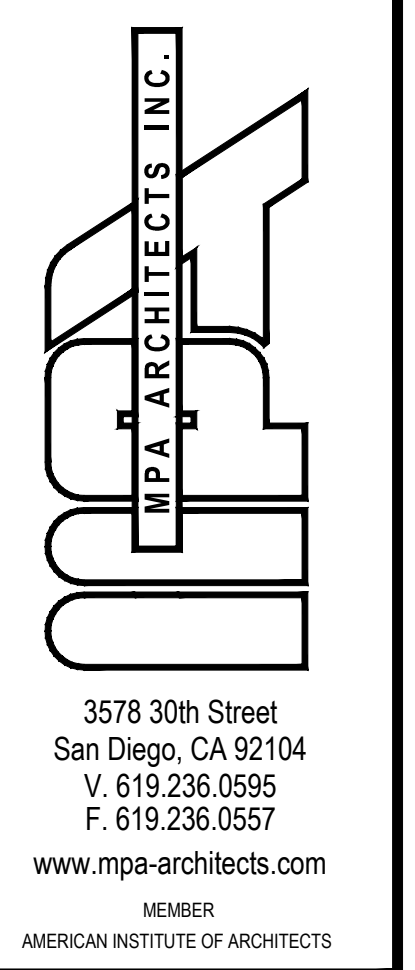
B. DOMESTIC COLD AND HOT WATER: ASTM B88, TYPE L, LEAD FREE SOLDER JOINTS, HARD DRAWN COPPER TUBING, FITTINGS ANSI/ASME B16.22, WROUGHT COPPER, INSULATE HOT WATER

C. DOMESTIC COLD WATER-BELOW GRADE: ASTM B88, TYPE K, LEAD FREE SOLDER JOINTS, SOFT COPPER TUBING, FITTINGS ANSI/ASME B16.22 WROUGHT COPPER (TRAP PRIMER PIPE WRAPPED IN (2) LAYERS 10 MIL PLUMBERS TAPE)

D. CONDENSATE DRAINAGE: ASTM B88, TYPE M, LEAD FREE SOLDER JOINTS, HARD DRAWN COPPER TUBING, FITTINGS ANSI/ASME B16.22, WROUGHT COPPER, INSULATED

E. 2" BELOW GRADE DOMESTIC COLD WATER SITE PIPING: CORZAN CPVC SCHEDULE 80 IRON PIPE SIZE (IPS), ASTM F441, SOCKET FITTINGS ASTM F 439, NSF 61, INSTALL PER MANUFACTURER'S INSTALL MANUAL.

F. FIRE SUPPLY PIPE BELOW GRADE: PVC PRESSURE PIPE, AWWA C300, DR18, 235 PSI, FM LISTED FOR UNDERGROUND FIRE PROTECTION, INSTALLED PER NFPA 24 & 13 AND PIPE MANUFACTURER'S INSTRUCTIONS/AND LISTING, BURIED WITH A MINIMUM 36" OF COVER.



COUNTY OF IMPERIAL  
PLANNING & DEV.  
SERVICES DEPT  
801 MAIN STREET  
EL CENTRO, CA 92243  
(760) 482-4236

PROJECT

A PROPOSED PUBLIC SAFETY FACILITY FOR:  
**WINTERHAVEN  
PUBLIC SAFETY FACILITY**  
WINTERHAVEN, CA

REVISIONS

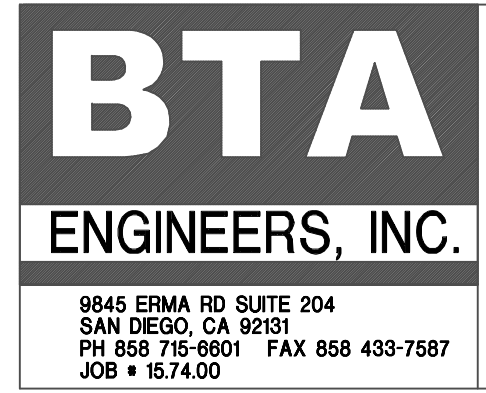
NO.	DESCRIPTION	DATE

SHEET TITLE

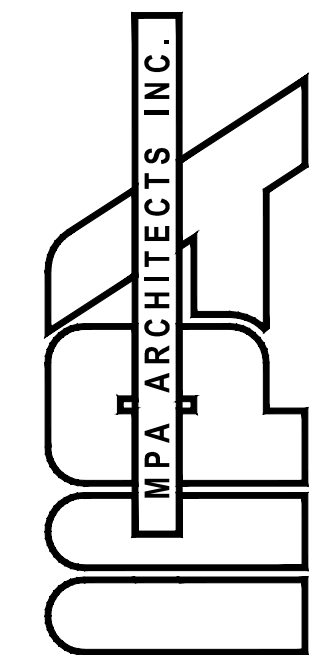
NOTES

DATE	SCALE	NONE

P 1.0







3578 30th Street  
San Diego, CA 92104  
V. 619.236.0595  
F. 619.236.0557  
www.mpa-architects.com

MEMBER  
AMERICAN INSTITUTE OF ARCHITECTS

CLIENT

COUNTY OF IMPERIAL  
PLANNING & DEV.  
SERVICES DEPT  
801 MAIN STREET  
EL CENTRO, CA 92243  
(760) 482-4236

PROJECT

A PROPOSED PUBLIC SAFETY FACILITY FOR:  
**WINTERHAVEN  
PUBLIC SAFETY FACILITY**  
WINTERHAVEN, CA

REVISIONS

NO.	DESCRIPTION	DATE

SHEET TITLE

**SITE PLAN**

DATE: 02/27/17 SCALE: 1" = 20'

DRAWN BY: DATE: SHEET NUMBER: P.2.0

PROJECT NO: 15.74.00

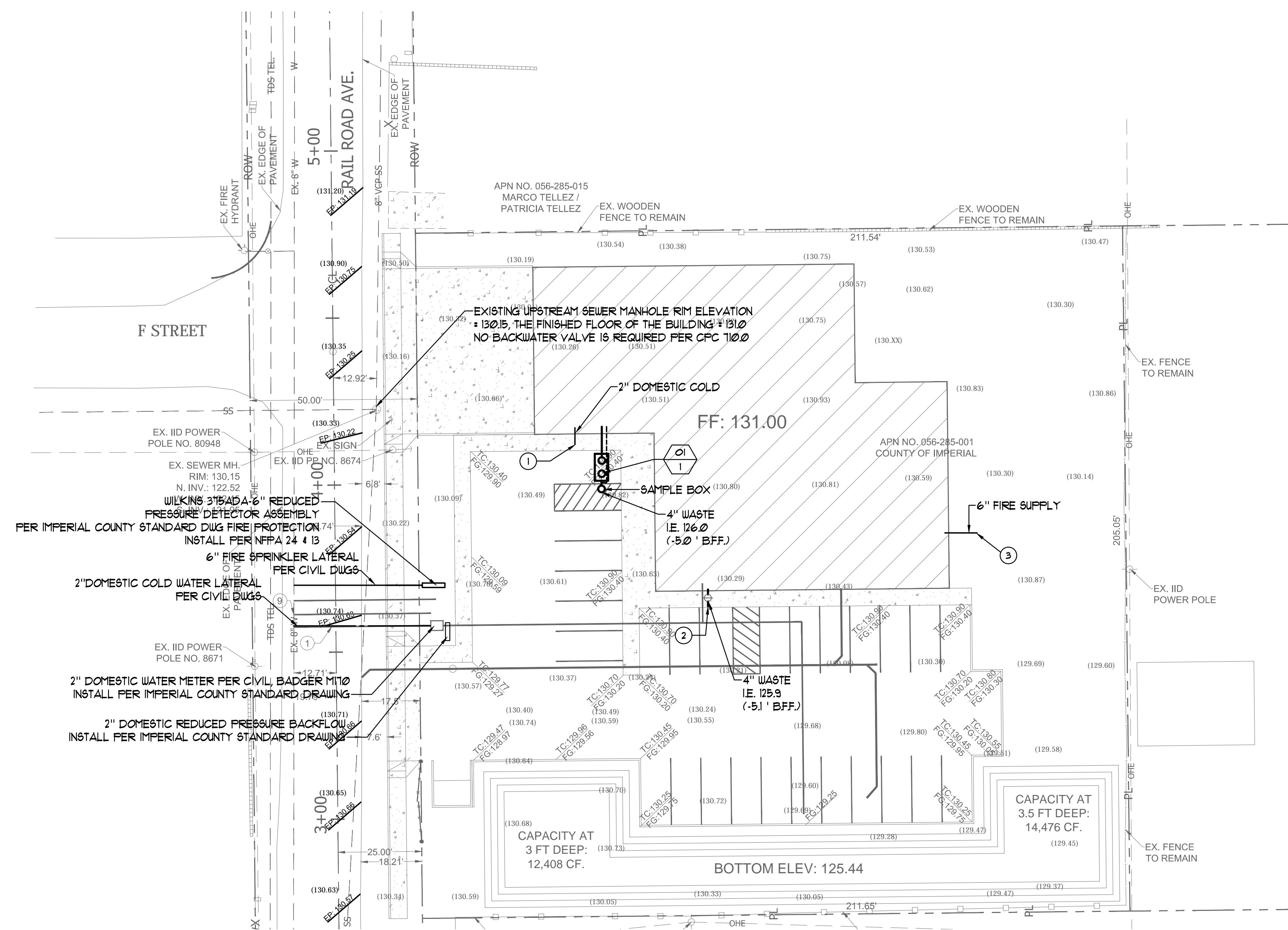
**KEYNOTES:**

- ① SEE CIVIL DRAWINGS FOR CONTINUATION OF 2 INCH DOMESTIC COLD WATER PIPE
- ② SEE CIVIL DRAWINGS FOR CONTINUATION OF 4 INCH SANITARY WASTE PIPE
- ③ SEE CIVIL DRAWINGS FOR CONTINUATION OF 6 FIRE PROTECTION SUPPLY

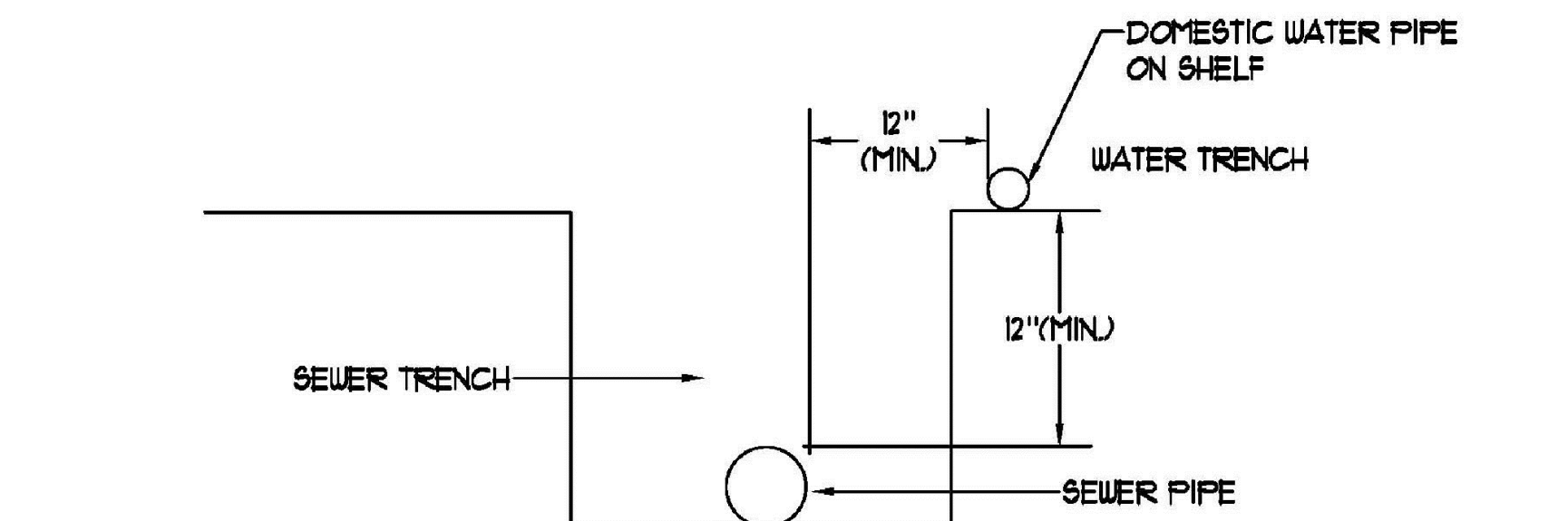
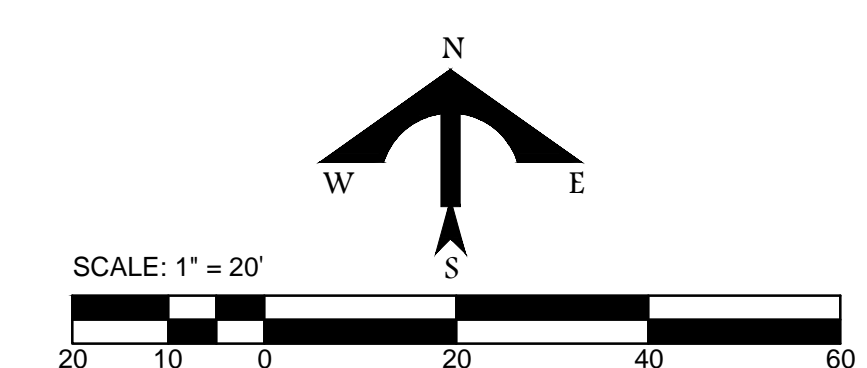
**GENERAL KEYNOTES:**

A PLUMBING SCOPE OF WORK (SEWER, DOMESTIC WATER, STORM) IS WITHIN 5 FT OF THE BUILDING PERIMETER. PLUMBING SCOPE INCLUDES OIL INTERCEPTOR AND SAMPLE BOX. PLUMBING SHOWN BEYOND THE BUILDING 5 FT PERIMETER IS FOR REFERENCE ONLY. THE STORMWATER FILTRATION SYSTEM WILL BE DESIGNED BY THE CIVIL ENGINEER FOR CONTINUATION OF DOMESTIC WATER AND SEWER PIPES BEYOND THE BLDG PERIMETER SEE CIVIL SHEETS. IMPERIAL COUNTY IS RESPONSIBLE FOR PERMITTING, PLAN CHECK, AND INSPECTIONS OF THESE PRIVATE UTILITY SYSTEMS. THE PLUMBING SYSTEMS DESCRIBED ARE DESIGNED PER THE 2013 CALIFORNIA PLUMBING CODE.

B. SLOPE WASTE @ 2% (TYP)



**PLUMBING SITE PLAN**

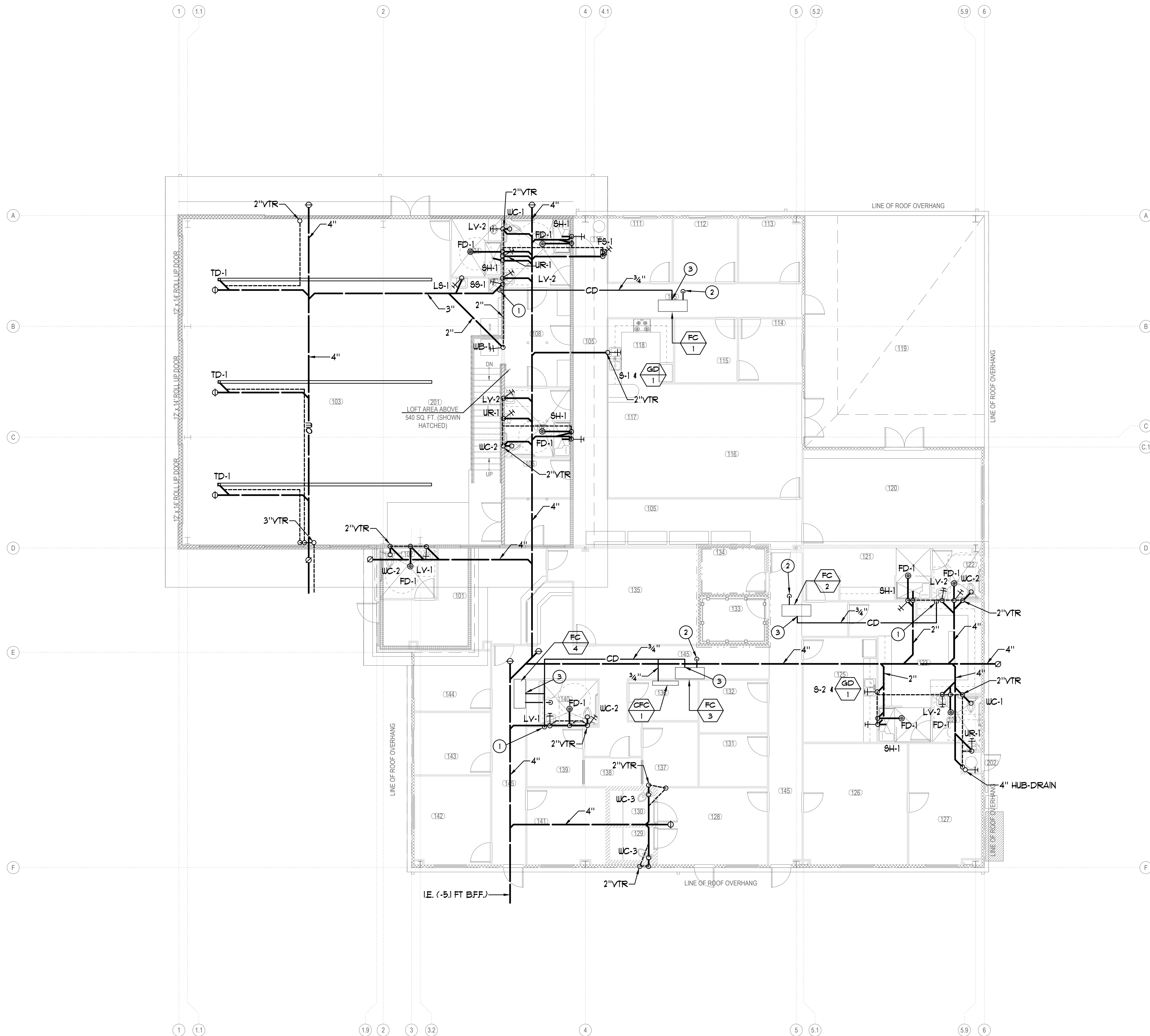


**WATER/SEWER SECTION CROSSING ON SITE**  
SCALE: NONE

**BTA**  
ENGINEERS, INC.  
9845 ERMA RD SUITE 204  
SAN DIEGO, CA 92131  
PH 858 715-8801 FAX 858 433-7587  
JOB # 15.74.00



Copyright 2015, MPA Architects, Inc. All rights reserved.



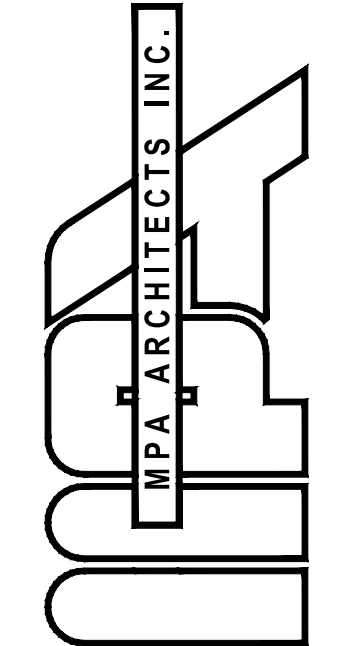
**KEYNOTES:**

- ① 3/4" CONDENSATE DRAIN DOWN INSIDE WALL AND OUT THRU WALL AND CONNECT TO LAVATORY TAILPIECE. (P4.0)
- ② 3/4" OVERFLOW DRAIN THROUGH CEILING. PROVIDE ESCUTCHEON. (P4.0)
- ③ 3/4" TRAPPED & VENTED CONDENSATE (P4.0)

**GENERAL NOTES:**

- SLOPE WASTE @ 2% (TYP)
- SLOPE CONDENSATE @ 1% (TYP)

**DWV FLOOR PLAN**  
1/8"=1'-0" (A)



3578 30th Street  
San Diego, CA 92104  
V. 619.236.0595  
F. 619.236.0557  
www.mpa-architects.com

MEMBER  
AMERICAN INSTITUTE OF ARCHITECTS

CLIENT

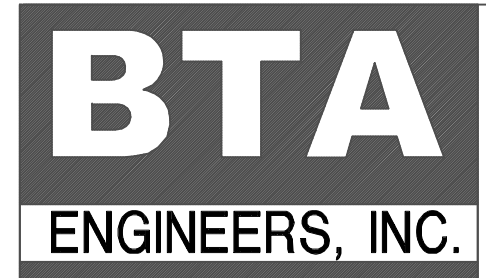
COUNTY OF IMPERIAL  
PLANNING & DEV.  
SERVICES DEPT  
801 MAIN STREET  
EL CENTRO, CA 92243  
(760) 482-4236

PROJECT

A PROPOSED PUBLIC SAFETY FACILITY FOR:  
**WINTERHAVEN  
PUBLIC SAFETY FACILITY**  
WINTERHAVEN, CA

**REVISIONS**

NO.	DESCRIPTION	DATE



8845 ERMA RD SUITE 204  
SAN DIEGO, CA 92121  
PH 858 715-8801 FAX 858 433-7587  
JOB # 15.74.00



SHEET TITLE

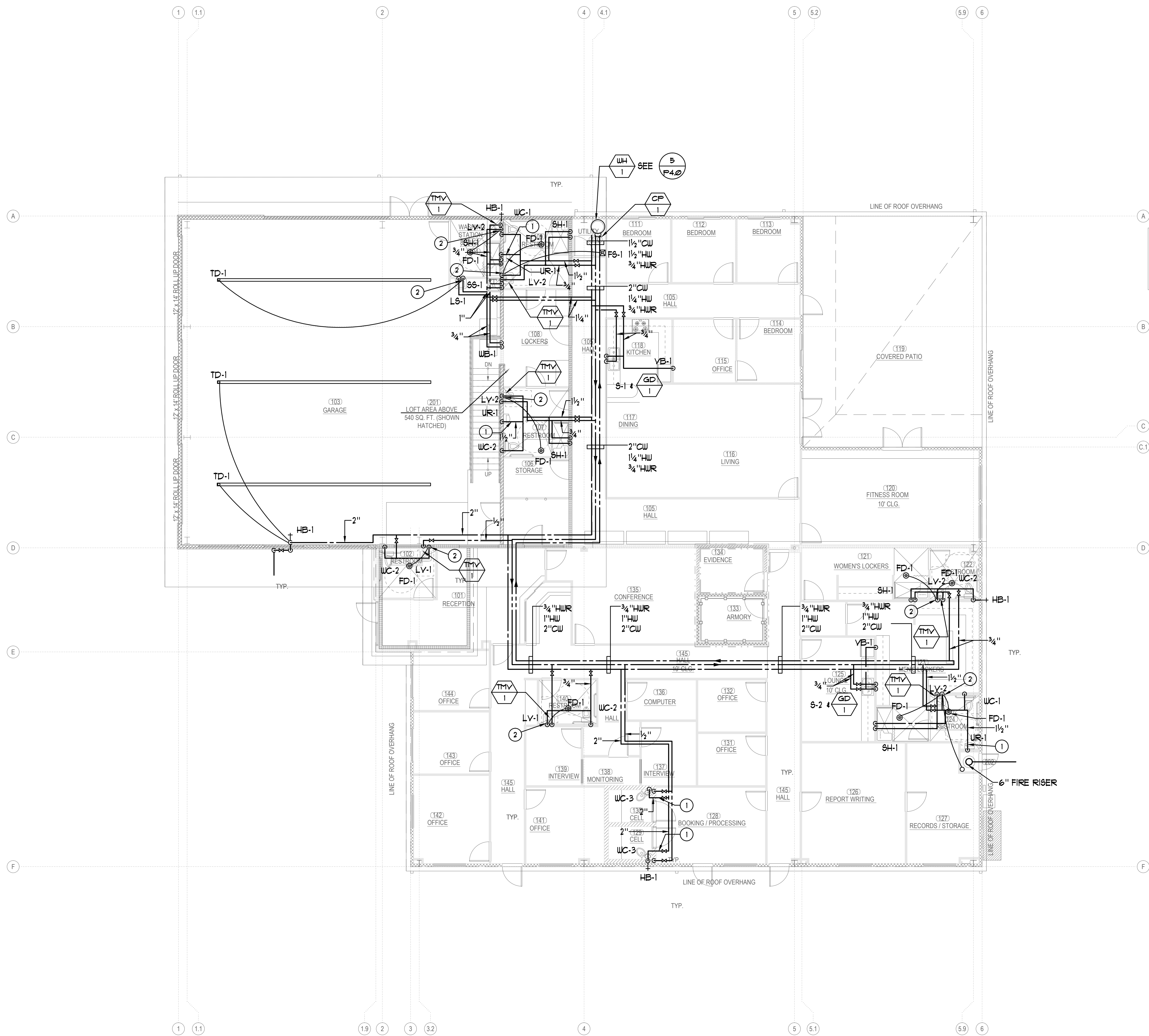
**DWV PLAN**

DATE: 02/17 SCALE: 1/8" = 1'-0"

DRAWN BY: DATE: SHEET NUMBER:

PROJECT NO: **P 3.0**

Copyright 2015, MPA Architects, Inc. All rights reserved.



**KEYNOTES:**

- ① WATER HAMMER ARRESTOR SIZE A WITH ACCESS PANEL
- ② TRAP PRIMER TO SERVE DRAIN

**GENERAL NOTES:**

ALL VALVES SHALL BE PROVIDED WITH AN ACCESS PANEL. PROVIDE FIRE RATED ACCESS PANEL WHERE VALVES ARE LOCATED IN A RATED WALL OR CEILING.

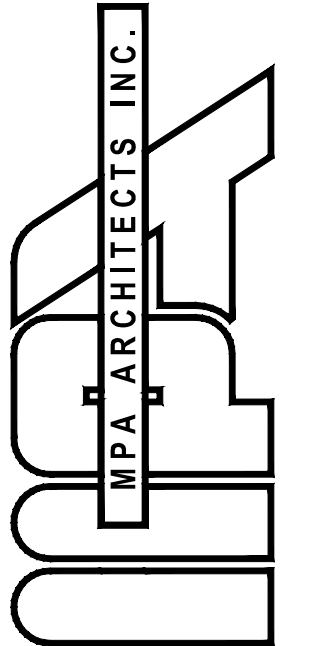
PRESSURIZED COPPER WATER PIPES ARE NOT ALLOWED BELOW GROUND. ONLY TYPE K COPPER TRAP PRIMER PIPES MAY BE PLACED UNDERGROUND IF WRAPPED WITH (2) LAYERS OF 10 MIL PLUMBERS TAPE.

POWER GENERATOR  
VERIFY LOCATION

**WATER FLOOR PLAN**

1/8" = 1'-0"

A



3578 30th Street  
San Diego, CA 92104  
V. 619.236.0595  
F. 619.236.0557

www.mpa-architects.com

MEMBER  
AMERICAN INSTITUTE OF ARCHITECTS

CLIENT

COUNTY OF IMPERIAL

PLANNING & DEV.

SERVICES DEPT

801 MAIN STREET

EL CENTRO, CA 92243

(760) 482-4236

PROJECT

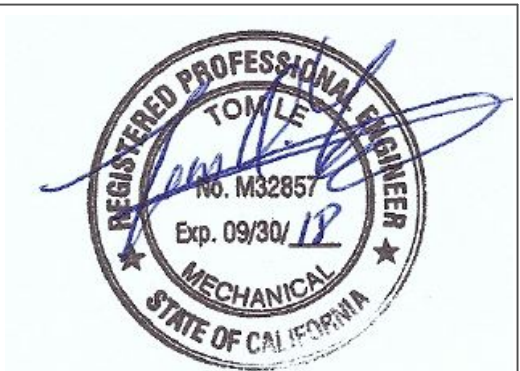
A PROPOSED PUBLIC SAFETY FACILITY FOR:  
**WINTERHAVEN  
PUBLIC SAFETY FACILITY**  
WINTERHAVEN, CA

REVISIONS

NO.	DESCRIPTION	DATE

**BTA**  
ENGINEERS, INC.

8845 ERMA RD SUITE 204  
SAN DIEGO, CA 92121  
PH 858 715-8801 FAX 858 433-7587  
JOB # 15.74.00



SHEET TITLE

**WATER PLAN**

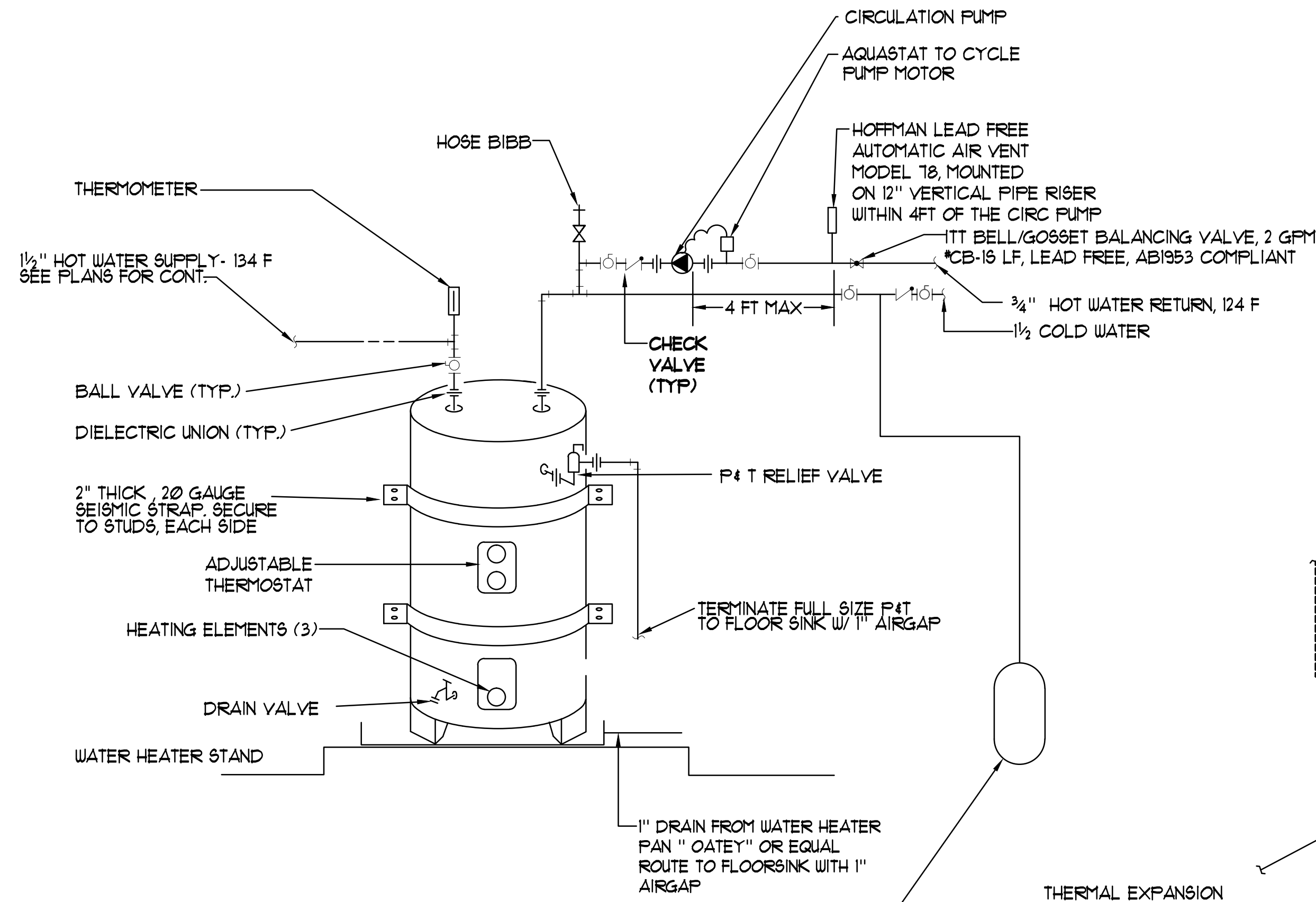
DATE: 02/17 SCALE: 1/8" = 1'-0"

DRAWN BY: DATE:

CHECKED BY: SHEET NUMBER:

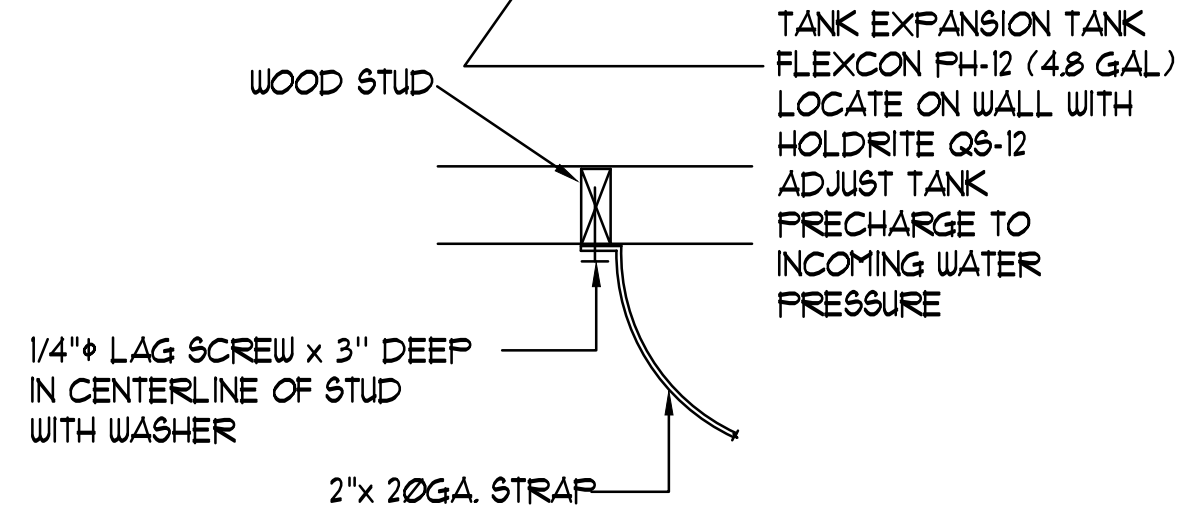
PROJECT NO: **P3.1**

Copyright © 2015, MPA Architects, Inc. All rights reserved.

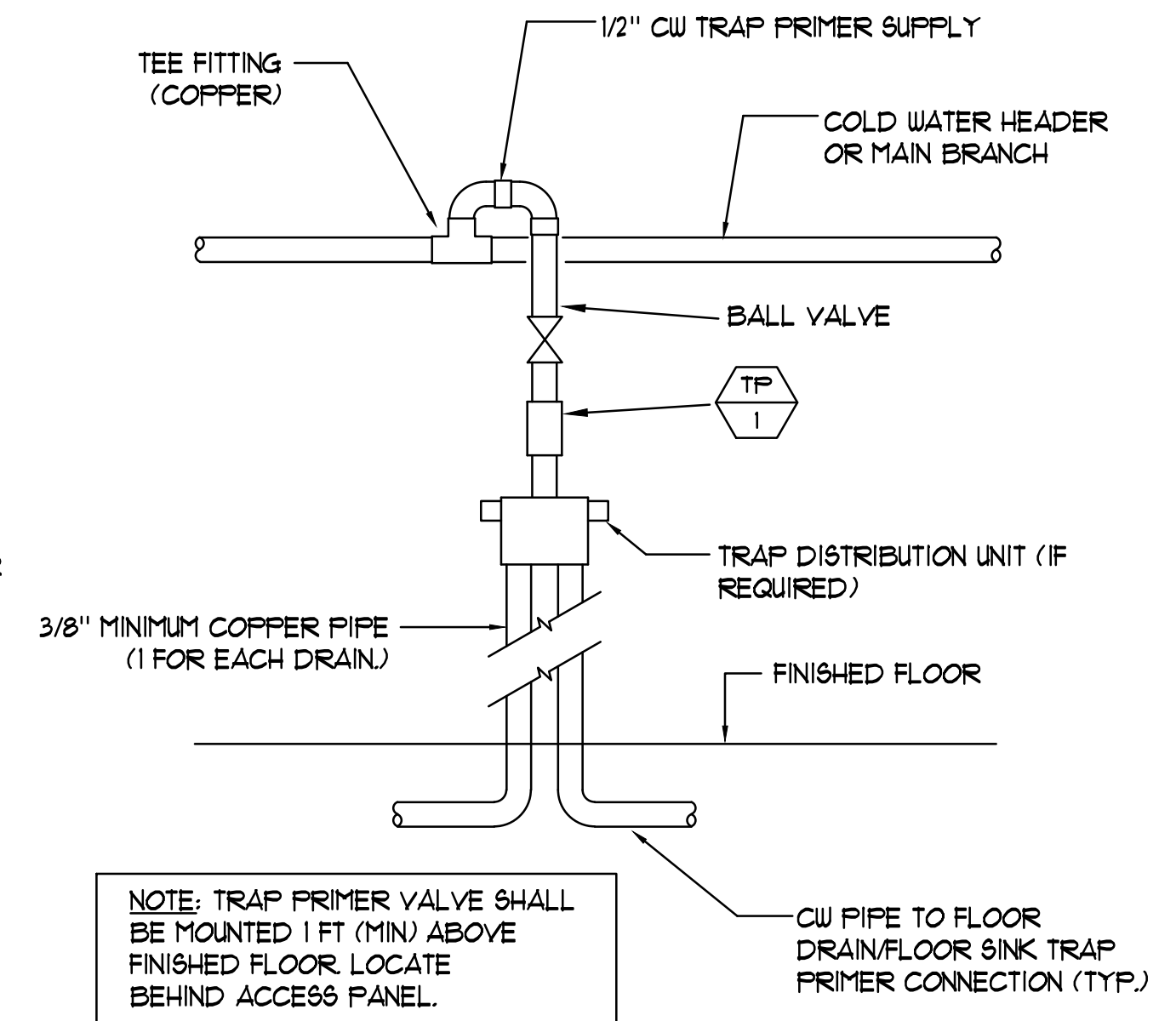
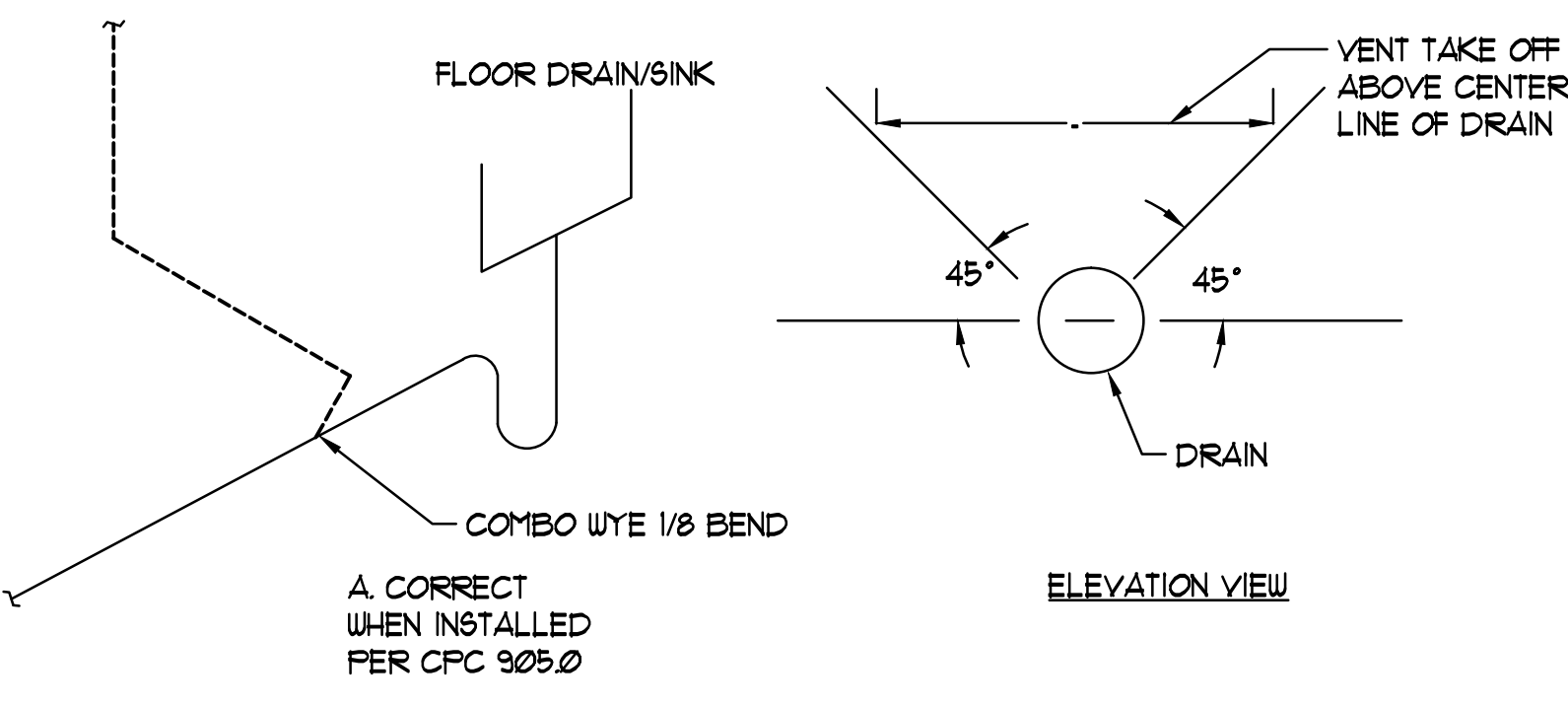


**WATER HEATER NOTES:**

1. PROVIDE AND INSTALL (2) 20 GAUGE STRAPS TO ADEQUATELY BRACE THE WATER HEATER TO RESIST SEISMIC FORCES. ONE STRAP AT TOP 1/3 OF TANK AND ONE STRAP AT BOTTOM 1/3 OF THE TANK, ANCHORED TO THE WALL. MAINTAIN 4 INCHES OF CLEARANCE BETWEEN THE WATER HEATER CONTROLS AND THE SEISMIC STRAPS.
2. SEISMIC STRAPPING OF WATER HEATER SHALL COMPLY WITH SECTION 508.0 CFC
3. PROVIDE EXPANSION TANK OR OTHER APPROVED METHOD OF RELIEVING PRESSURE PER SECTION 608.3 CFC.
4. THE COLD WATER PIPING AND RECIRCULATION LOOP PIPING SHALL NOT BE CONNECTED TO THE HOT WATER STORAGE TANK DRAIN PORT

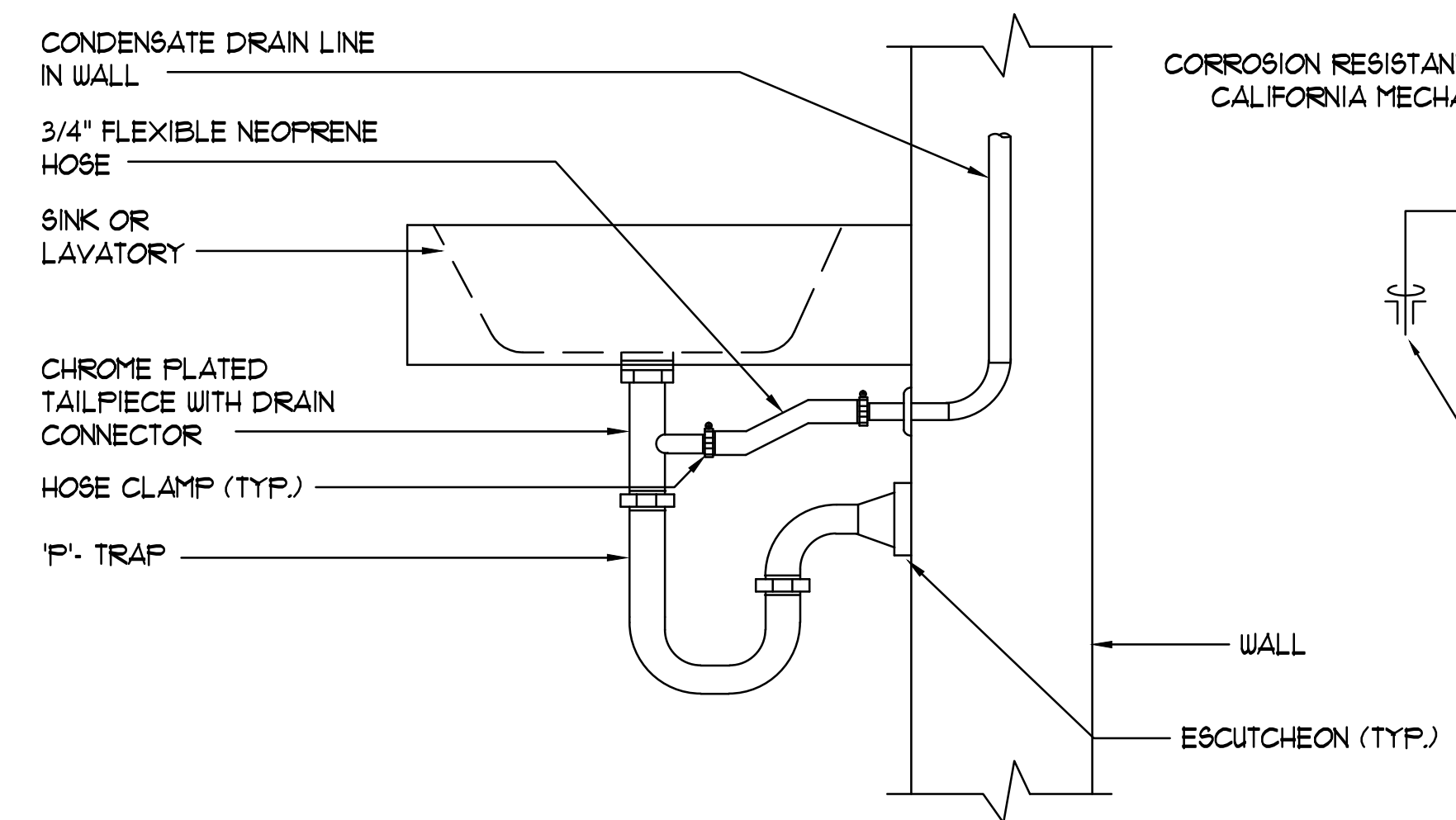


**3 VENTING FLOORSINK/DRAIN**  
SCALE: NTS

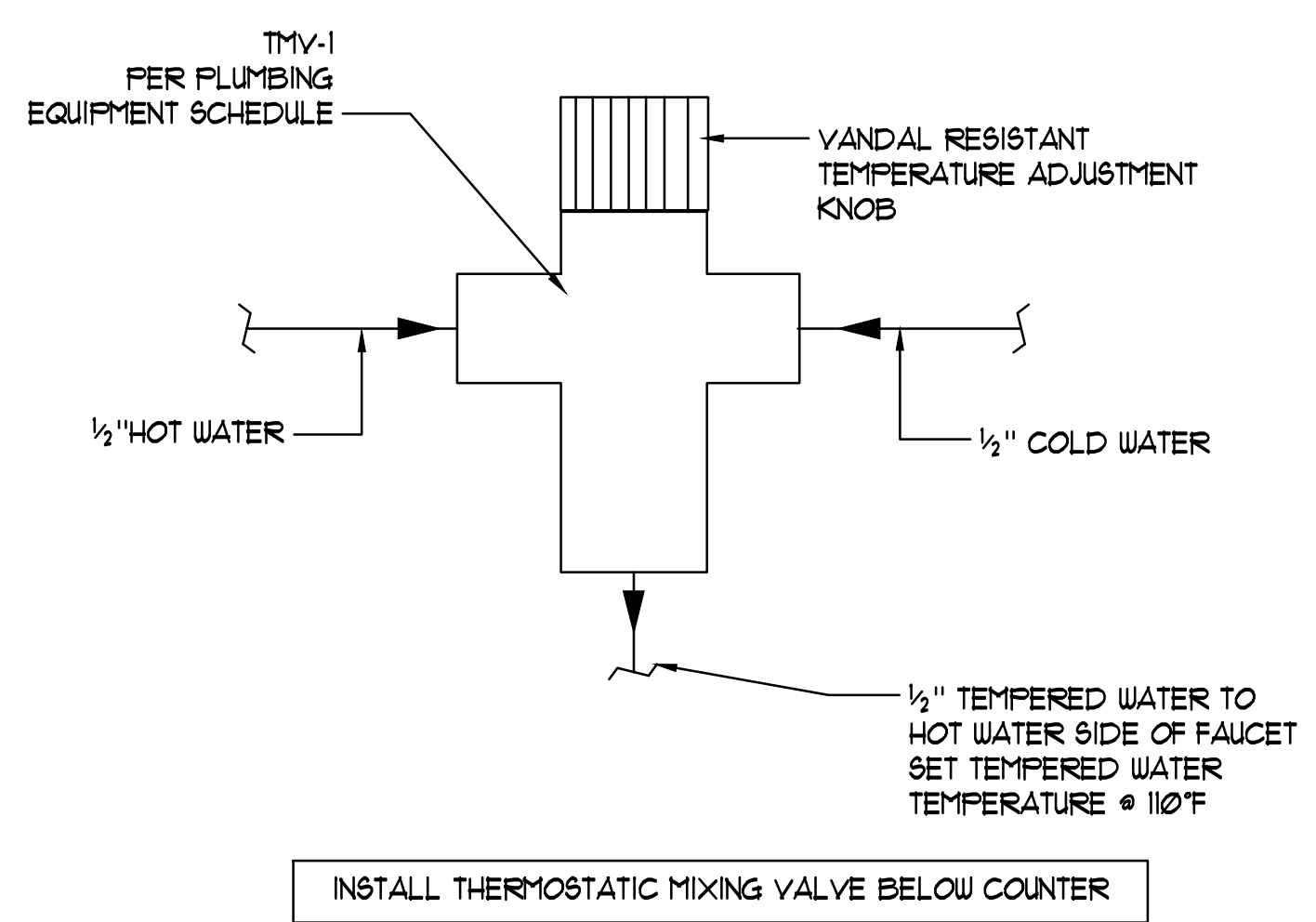
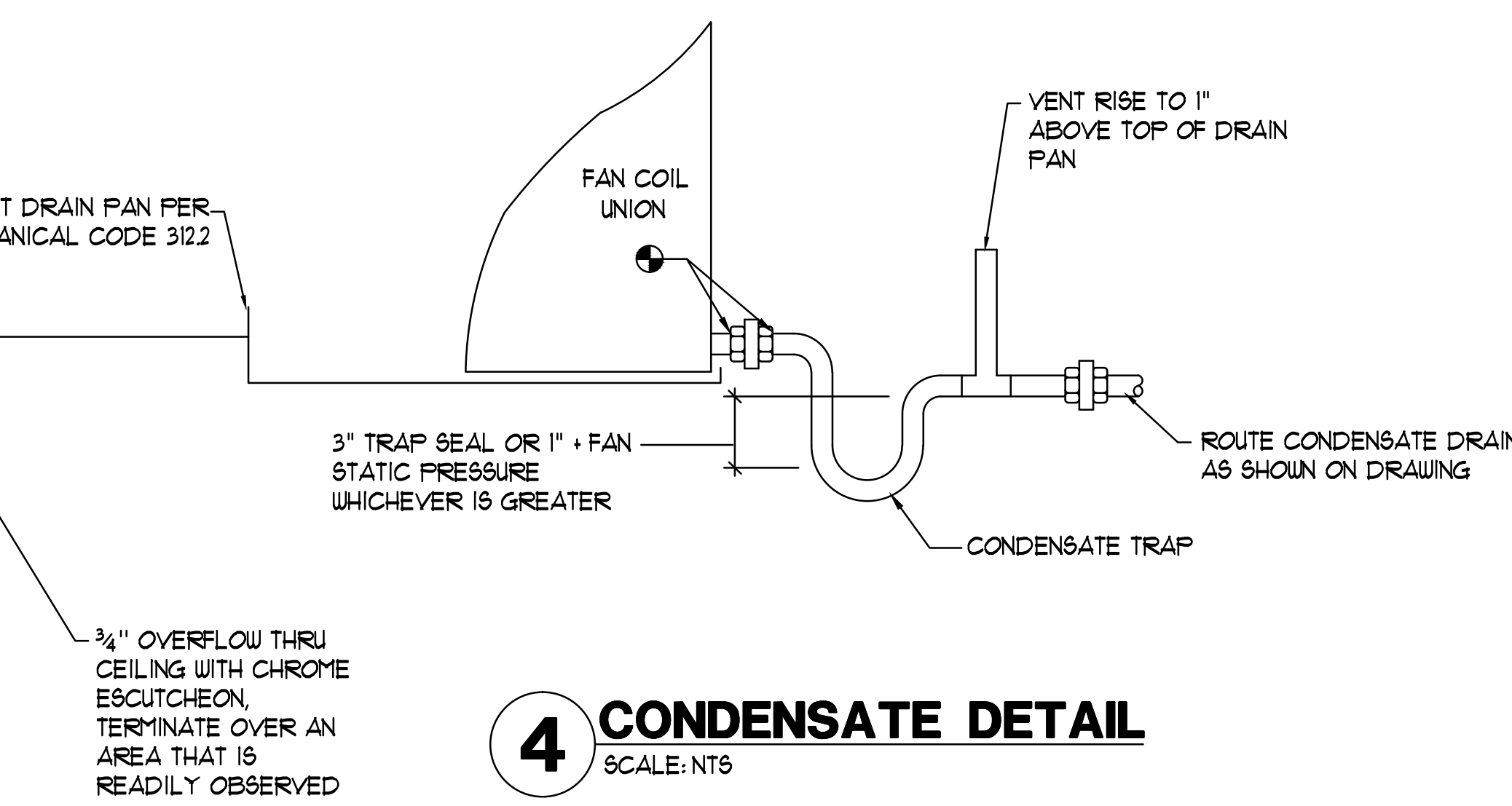


**1 TRAP PRIMER DETAIL**  
SCALE: NONE

**5 ELECTRIC WATER HEATER**  
SCALE: NTS

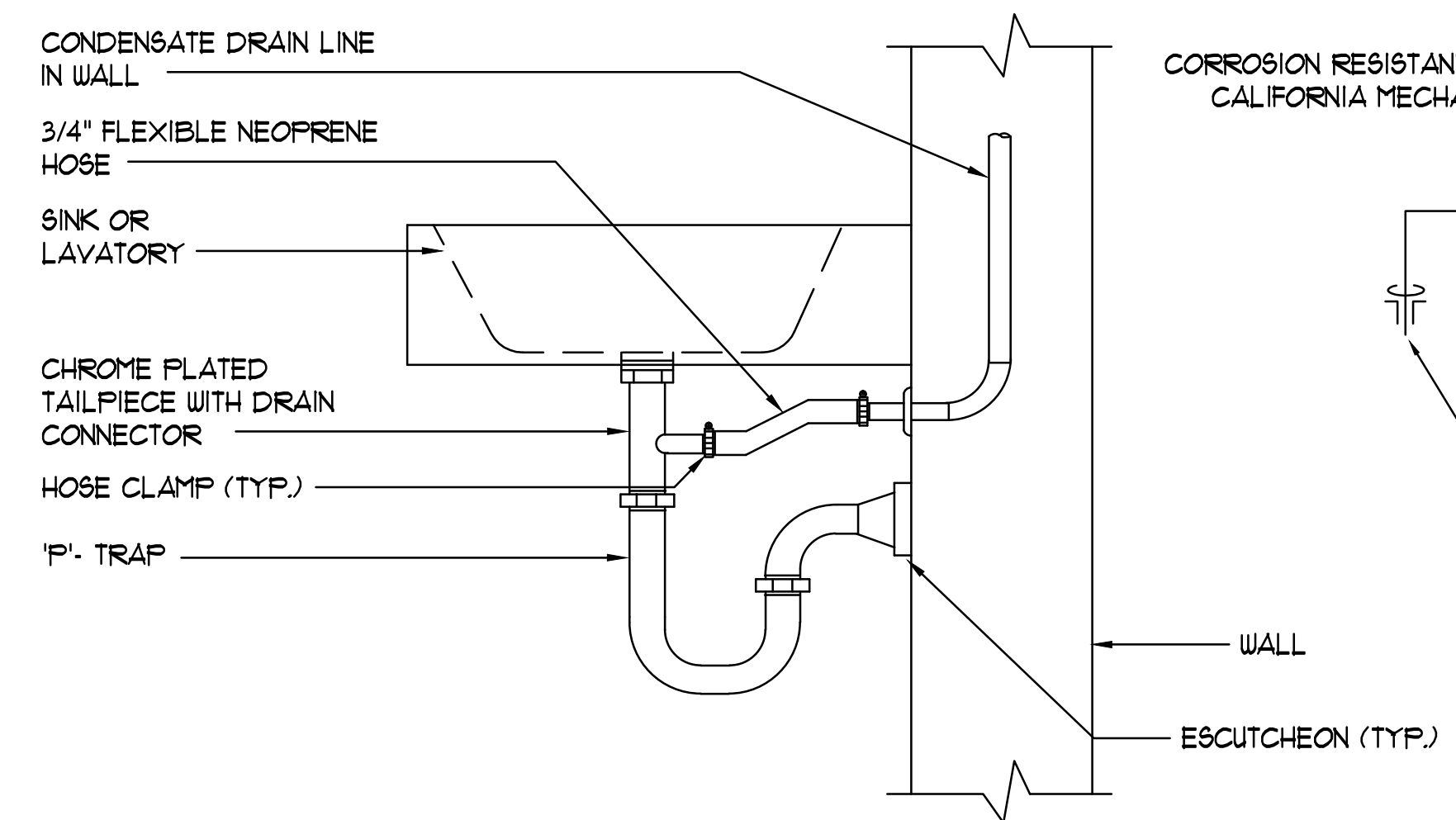


**4 CONDENSATE DETAIL**  
SCALE: NTS



**2 THERMOSTATIC MIXING VALVE DETAIL**  
SCALE: NONE

**6 CONDENSATE TO SINK P-TRAP**  
SCALE: NONE



REVISIONS		
NO.	DESCRIPTION	DATE

SHEET TITLE	
<b>DETAILS</b>	
DATE: 02/17	SCALE: NONE
DRAWN BY:	DATE:
CHECKED BY:	SHEET NUMBER:
PROJECT NO:	<b>P 4.0</b>